

Mainsail: 8001104 Ric-1 Samson Ketch 68 fullbattmain.des

Design Info
=====

Design File:
\\NAS\Engineering files\Queenie-Customer Order\Fareast Sails\2024 Orders\Need to be Confirmed\8001104 Ric Samson

Initial Design Date: 14/12/2024
Boat:
Samson Ketch 68
Client:

Comments:

Design Data
=====

Main

Measurements

Luff geodesic: 14.602m
Leech geodesic: 14.886m
Foot geodesic: 4.603m
Head geodesic: 0.135m
Upper width (MUW): 0.922m
Three-quarter width (MTW): 1.679m
Half width (MHW): 2.889m
Quarter width (MQW): 3.822m
Foot median: 14.700m
ORC Mainsail area: 39.299m?
Surface area: 40.061m?
Clew height: 0.435m
Mast rake: 0.000m

Battens

Position	Length	Roach	Angle	Luff	Leech	Full
80.000%	1.466m	0.340m	78.579?	11.663m	11.873m	Full
60.000%	2.518m	0.441m	78.579?	8.744m	8.904m	Full
40.000%	3.333m	0.358m	78.579?	5.827m	5.936m	Full
20.000%	4.008m	0.195m	78.579?	2.913m	2.968m	Full

Reefing Points

1, Luff: 2.187m ; Leech: 2.208m ; Offset: 0.000m ; Number Eyelets: 3
2, Luff: 4.375m ; Leech: 4.414m ; Offset: 0.000m ; Number Eyelets: 3

Draft Stripes

1, Luff: 3.645m ; Leech: 3.272m ;
2, Luff: 7.294m ; Leech: 7.054m ;
3, Luff: 10.945m ; Leech: 10.881m ;

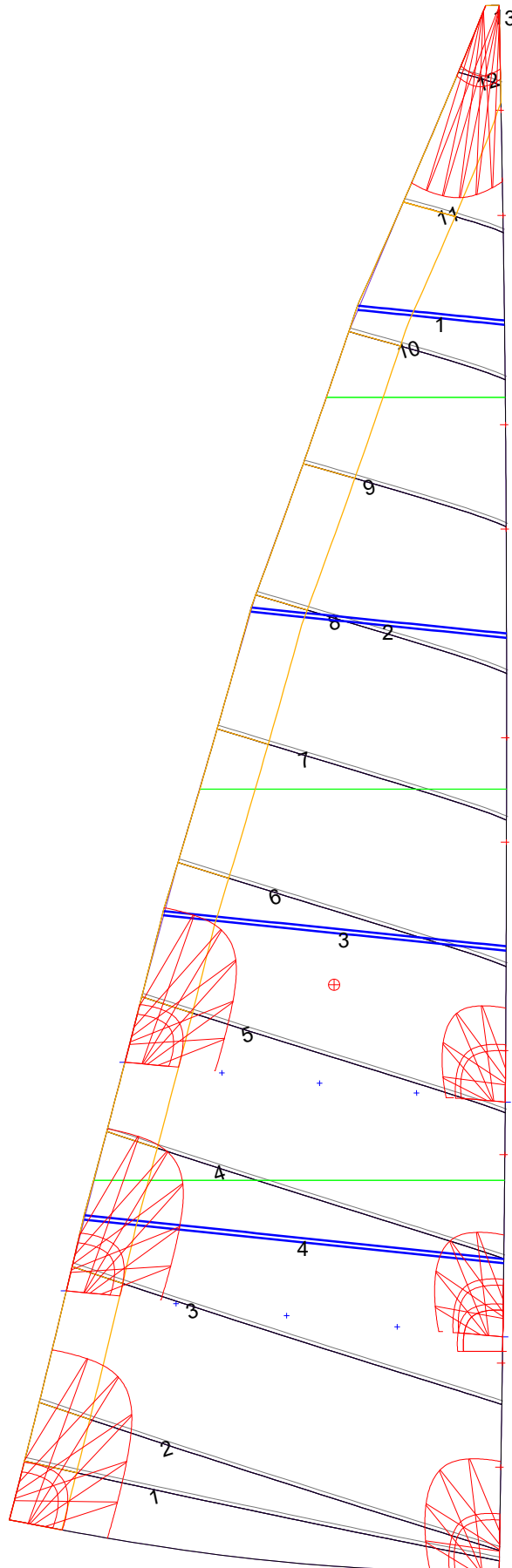
Luff Slides

1, Position: 0.971m
2, Position: 1.942m
3, Position: 3.884m
4, Position: 4.856m
5, Position: 6.800m
6, Position: 7.772m
7, Position: 9.717m
8, Position: 10.690m
9, Position: 12.643m
10, Position: 13.622m

Luff Curve

		Fanned Luff (@ 5.00% [0.228m])	Before BSeam
14.602m,	0.000m	100% (14.602m) :	0.000m
12.782m,	-0.034m	90% (13.143m) :	0.052m
10.951m,	-0.058m	80% (11.681m) :	0.097m
9.116m,	-0.068m	70% (10.222m) :	0.126m
7.301m,	-0.069m	60% (8.761m) :	0.142m
5.441m,	-0.064m	50% (7.301m) :	0.144m
3.650m,	-0.051m	40% (5.841m) :	0.135m
1.820m,	-0.029m	30% (4.381m) :	0.114m
0.000m,	0.000m	20% (2.920m) :	0.082m
		10% (1.461m) :	0.041m
		0% (0.000m) :	0.000m

Mainsail: 8001104 Ric-1 Samson Ketch 68 fullbattmain.des



Seam Allowances			
Zone:	Split	Radial	Cross
1	0.035m	0.035m	0.035m
Cover 1	0.035m	0.035m	0.035m

Edge Excesses			
Sail:	Luff	Leech	Foot
0	0.000m	0.000m	0.000m
Cover 0	0.000m	0.000m	0.000m

Total Seam Lengths (m)

Horizontal	34.97
Radial/Vertical	0.00
Bi-Radial Split	0.00

Materials

Material	Area (m ²)	Panels
Material 1	40.06	1,2,3,4,5 6,7,8,9,10 11,12,13