

Genoa: 8001024 Andrew-2 triradial HeadsailV2.des

Design Info
=====

Design File:
\\NAS\Engineering files\Queenie-Customer Order\Fareast Sails\2024 Orders\Need to be Confirmed\8001024 Andrew m

Initial Design Date: 14/11/2024
Boat:

Comments:
webbing loop 30mm at head and tack.
luff length in sail plus webbing loops will be 17.6220mtr.

Client:

Design Data
=====

Genoa

Measurements

Luff geodesic:	17.562m
Leech geodesic:	16.900m
Foot geodesic:	5.380m
Headboard width:	0.050m
Luff perpendicular (HLP):	5.183m
Upper width (HUW):	0.530m
Three-quarter width (HTW):	1.053m
Half width (HHW):	2.282m
Quarter width (HQW):	3.662m
Foot median:	17.145m
ORC Headsail area:	42.501m?
IRC Headsail area:	42.412m?
Surface area:	42.291m?
Forestay height:	17.650m
J:	4.990m

Draft Stripes

1, Luff: 4.404m ; Leech: 4.200m ;
2, Luff: 8.807m ; Leech: 8.428m ;
3, Luff: 13.198m ; Leech: 12.640m ;

Luff Curve

17.560m,	0.000m
16.101m,	0.044m
14.487m,	0.080m
13.066m,	0.099m
11.415m,	0.106m
8.739m,	0.093m
5.707m,	0.063m
2.968m,	0.031m
0.000m,	0.000m

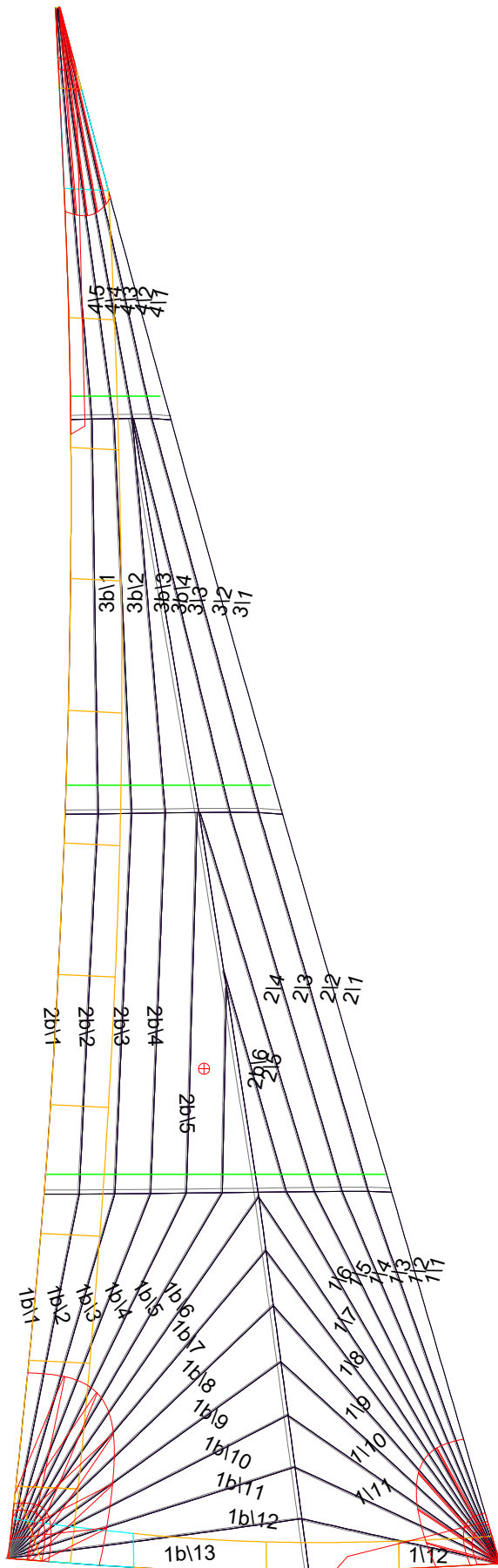
Fanned Luff (@ 5.00% [0.267m])

100% (17.561m) :	-0.000m
90% (15.803m) :	-0.045m
80% (14.050m) :	-0.079m
70% (12.293m) :	-0.096m
60% (10.537m) :	-0.099m
50% (8.780m) :	-0.092m
40% (7.024m) :	-0.078m
30% (5.268m) :	-0.061m
20% (3.513m) :	-0.041m
10% (1.755m) :	-0.022m
0% (0.000m) :	0.000m

Before BSeam

-0.000m
-0.016m
-0.022m
-0.018m
-0.007m
0.006m
0.016m
0.020m
0.021m
0.015m
0.000m

Genoa: 8001024 Andrew-2 triradial HeadsailV2.des



Seam Allowances

	Split	Radial	Cross
Zone: 1/a	0.045m	0.015m	0.045m
Zone: 1/b	0.045m	0.015m	0.045m
Zone: 2/a	0.045m	0.015m	0.045m
Zone: 2/b	0.045m	0.015m	0.045m
Zone: 3/a	0.045m	0.015m	0.045m
Zone: 3/b	0.045m	0.015m	0.045m
Zone: 4	0.045m	0.015m	0.045m
Cover 1	0.025m	0.025m	0.025m
Cover 2	0.025m	0.025m	0.025m
Cover 3	0.000m	0.000m	0.000m
Cover 4	0.000m	0.000m	0.000m

Edge Excesses

	Luff	Leech	Foot
Sail:	0.000m	0.000m	0.000m
Cover 0	0.070m	0.100m	0.070m
Cover 1	0.070m	0.070m	0.100m
Cover 2	0.000m	0.070m	0.070m
Cover 3	0.000m	0.070m	0.070m

Total Seam Lengths (m)

Horizontal	7.52
Radial/Vertical	164.86
Bi-Radial Split	13.10

Materials

Material	Area (m ²)	Panels
Material 1	42.38	1\1,1\2,1\3,1\4,1\5 1\6,1\7,1\8,1\9,1\10 1\11,1\12,1b\1,1b\2,1b\3 1b\4,1b\5,1b\6,1b\7,1b\8 1b\9,1b\10,1b\11,1b\12,1b\13 2\1,2\2,2\3,2\4,2\5 2b\6,2b\5,2b\4,2b\3,2b\2 2b\1,3\1,3\2,3\3,3b\4 3b\3,3b\2,3b\1,4\1,4\2 4\3,4\4,4\5