

# Genoa: 8001015 Noel HG 31 Headsail.des

Design Info  
=====

Design File:  
\\NAS\Engineering files\Queenie-Customer Order\Fareast Sails\2024 Orders\Need to be Confirmed\8001015 Noel HG

Initial Design Date: 26/10/2024  
Boat:  
HG 31  
Client:

Comments:

Design Data  
=====

## Genoa

### Measurements

Luff geodesic:	9.900m
Leech geodesic:	9.800m
Foot geodesic:	4.900m
Headboard width:	0.025m
Luff perpendicular (HLP):	4.747m
Upper width (HUW):	0.544m
Three-quarter width (HTW):	1.087m
Half width (HHW):	2.261m
Quarter width (HQW):	3.489m
Foot median:	9.742m
ORC Headsail area:	22.884m?
IRC Headsail area:	22.833m?
Surface area:	23.181m?
Forestay height:	10.500m
J:	3.000m

### Draft Stripes

1, Luff: 3.281m ; Leech: 3.283m ;  
2, Luff: 6.550m ; Leech: 6.488m ;

### Luff Curve

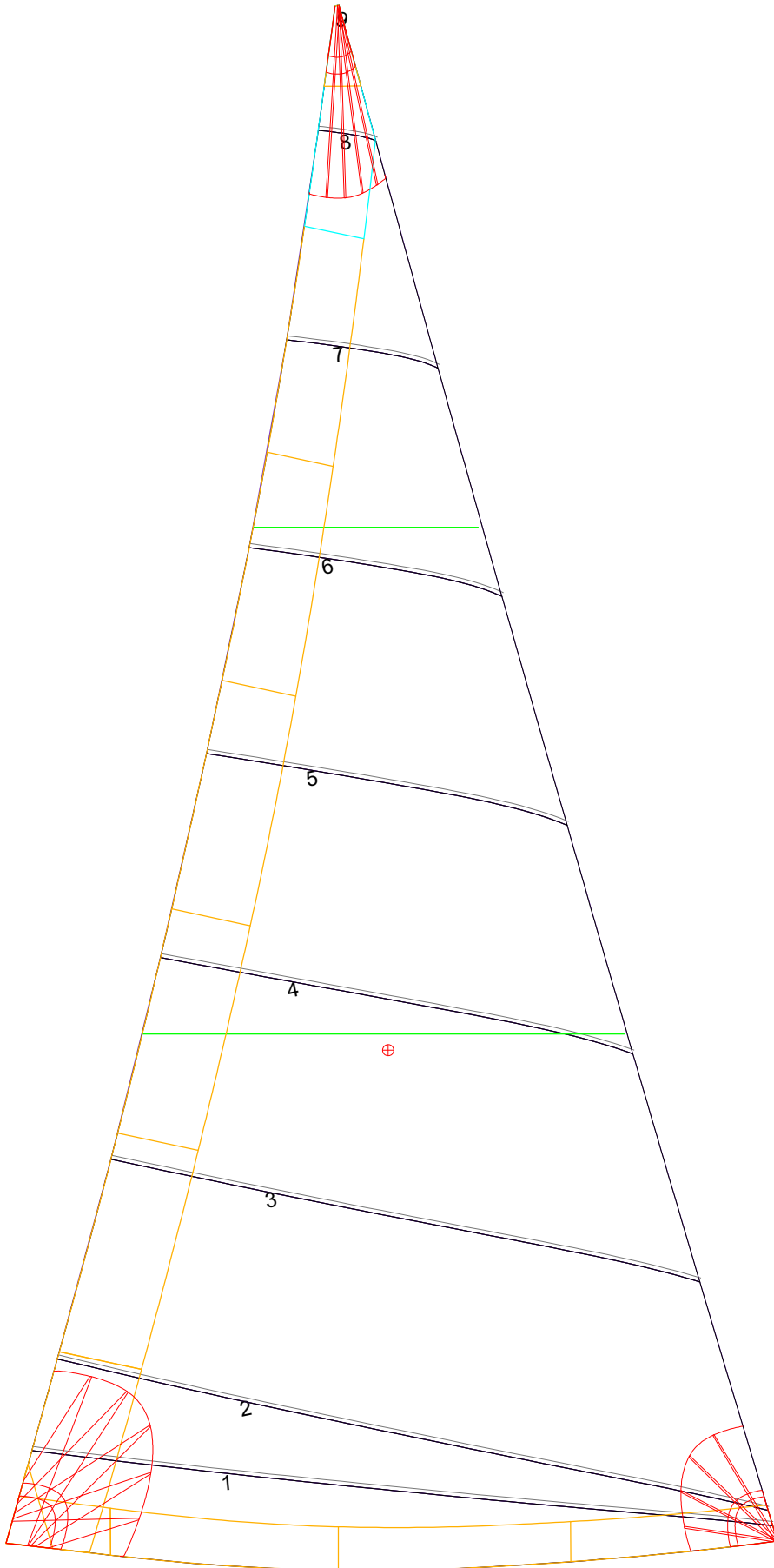
9.899m,	0.000m
7.914m,	0.042m
5.930m,	0.058m
3.950m,	0.053m
1.973m,	0.033m
0.000m,	0.000m

### Fanned Luff (@ 5.00% [0.239m])

100% (9.899m) :	0.000m	-0.000m
90% (8.908m) :	-0.021m	0.009m
80% (7.920m) :	-0.041m	0.018m
70% (6.929m) :	-0.054m	0.028m
60% (5.940m) :	-0.059m	0.039m
50% (4.950m) :	-0.059m	0.048m
40% (3.960m) :	-0.056m	0.051m
30% (2.969m) :	-0.049m	0.048m
20% (1.980m) :	-0.036m	0.037m
10% (0.989m) :	-0.019m	0.021m
0% (0.000m) :	0.000m	0.000m

### Before BSeam

# Genoa: 8001015 Noel HG 31 Headsail.des



## Seam Allowances

Zone:	Split	Radial	Cross
Zone: 1	0.025m	0.025m	0.025m
Cover 1	0.025m	0.025m	0.025m
Cover 2	0.000m	0.000m	0.000m
Cover 3	0.000m	0.000m	0.000m
Cover 4	0.025m	0.025m	0.025m

## Edge Excesses

Sail:	Luff	Leech	Foot
Sail:	0.000m	0.000m	0.000m
Cover 0	0.070m	0.100m	0.070m
Cover 1	0.000m	0.070m	0.070m
Cover 2	0.000m	0.070m	0.070m
Cover 3	0.070m	0.070m	0.100m

## Total Seam Lengths (m)

Horizontal	21.95
Radial/Vertical	0.00
Bi-Radial Split	0.00

## Materials

Material	Area (m <sup>2</sup> )	Panels
Material 1	23.22	1,2,3,4,5 6,7,8,9