

Mainsail: 8001005 Manuel fullbattmainV2.des

Design Info
=====

Design File:
\\NAS\Engineering files\Queenie-Customer Order\Fareast Sails\2024 Orders\Need to be Confirmed\8001005 Manuel m

Initial Design Date: 14/11/2024
Boat:

Comments:

Client:

Design Data
=====

Main

Measurements

Luff geodesic: 12.620m
Leech geodesic: 13.316m
Foot geodesic: 4.450m
Head geodesic: 0.160m
Upper width (MUW): 0.970m
Three-quarter width (MTW): 1.710m
Half width (MHW): 2.920m
Quarter width (MQW): 3.800m
Foot median: 12.915m
ORC Mainsail area: 33.923m?
Surface area: 34.851m?
Clew height: 0.100m
Mast rake: 0.000m

Battens

Position	Length	Roach	Angle	Luff	Leech	Full
83.333%	0.930m	0.258m	90.000?	10.177m	11.050m	
66.667%	1.329m	0.320m	90.000?	7.827m	8.840m	
50.000%	1.329m	0.324m	90.000?	5.502m	6.630m	
33.333%	1.329m	0.256m	90.000?	3.197m	4.420m	
16.667%	1.108m	0.132m	90.000?	0.909m	2.210m	

Reefing Points

1, Luff: 1.539m ; Leech: 1.596m ; Offset: 0.000m ; Number Eyelets: 3
2, Luff: 3.343m ; Leech: 3.465m ; Offset: 0.000m ; Number Eyelets: 3

Draft Stripes

1, Luff: 3.090m ; Leech: 3.102m ;
2, Luff: 6.242m ; Leech: 6.398m ;
3, Luff: 9.458m ; Leech: 9.803m ;

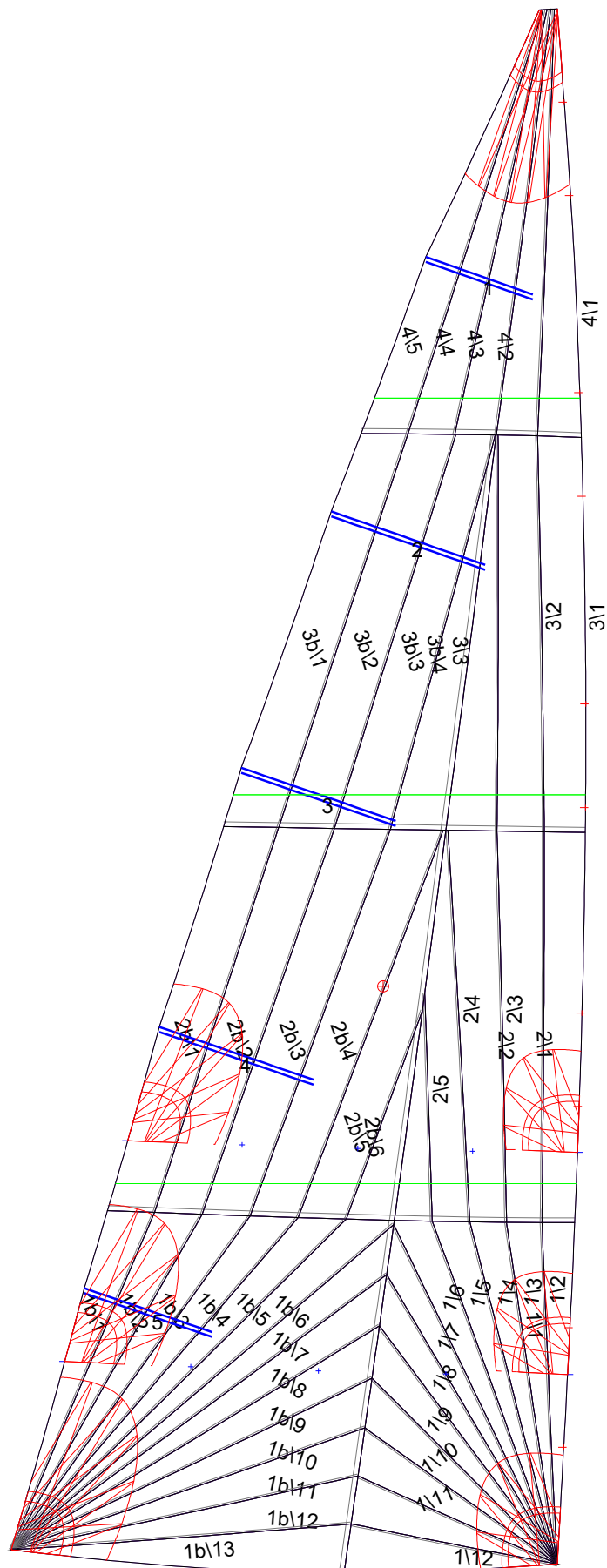
Luff Slides

1, Position: 0.949m
2, Position: 1.918m
3, Position: 3.715m
4, Position: 4.473m
5, Position: 6.138m
6, Position: 6.979m
7, Position: 8.661m
8, Position: 9.502m
9, Position: 11.102m
10, Position: 11.861m

Luff Curve

		Fanned Luff (@ 5.00% [0.221m])	Before BSeam
12.615m,	0.000m	100% (12.620m) :	0.000m 0.000m
11.043m,	-0.112m	90% (11.360m) :	0.069m 0.112m
9.461m,	-0.183m	80% (10.097m) :	0.120m 0.201m
7.875m,	-0.224m	70% (8.835m) :	0.152m 0.261m
6.308m,	-0.230m	60% (7.573m) :	0.169m 0.295m
4.700m,	-0.206m	50% (6.310m) :	0.170m 0.302m
3.154m,	-0.156m	40% (5.048m) :	0.158m 0.283m
1.572m,	-0.085m	30% (3.785m) :	0.132m 0.238m
0.000m,	0.000m	20% (2.523m) :	0.094m 0.172m
		10% (1.262m) :	0.048m 0.089m
		0% (0.000m) :	0.000m 0.000m

Mainsail: 8001005 Manuel fullbattmainV2.des



Seam Allowances

Zone:	Split	Radial	Cross
Zone: 1/a	0.040m	0.015m	0.040m
Zone: 1/b	0.040m	0.015m	0.040m
Zone: 2/a	0.040m	0.015m	0.040m
Zone: 2/b	0.040m	0.015m	0.040m
Zone: 3/a	0.040m	0.015m	0.040m
Zone: 3/b	0.040m	0.015m	0.040m
Zone: 4	0.040m	0.015m	0.040m

Edge Excesses

Sail:	Luff	Leech	Foot
Sail:	0.000m	0.000m	0.000m

Total Seam Lengths (m)

Horizontal	8.86
Radial/Vertical	125.71
Bi-Radial Split	9.68

Materials

Material	Area (m ²)	Panels
Material 1	34.85	1\1,1\2,1\3,1\4,1\5 1\6,1\7,1\8,1\9,1\10 1\11,1\12,1b\1,1b\2,1b\3 1b\4,1b\5,1b\6,1b\7,1b\8 1b\9,1b\10,1b\11,1b\12,1b\13 2\1,2\2,2\3,2\4,2\5 2b\6,2b\5,2b\4,2b\3,2b\2 2b\1,3\1,3\2,3\3,3b\4 3b\3,3b\2,3b\1,4\1,4\2 4\3,4\4,4\5