

# Mainsail: 8001002 Gaute LEOPARD 48 MainsailV4.des

Design Info  
=====

Design File:  
\\NAS\Engineering files\Queenie-Customer Order\Fareast Sails\2024 Orders\Need to be Confirmed\8001002 Gaute LE

Initial Design Date: 21/10/2024  
Boat:  
LEOPARD 48  
Client:

Comments:  
mast rake 1739mm  
tack angle 80 deg

Design Data  
=====

Main

Measurements

Luff geodesic: 17.226m  
Leech geodesic: 17.520m  
Foot geodesic: 6.880m  
Head geodesic: 0.200m  
Upper width (MUW): 1.841m  
Three-quarter width (MTW): 3.355m  
Half width (MHW): 5.415m  
Quarter width (MQW): 6.333m  
Foot median: 17.250m  
ORC Mainsail area: 80.422m?  
Surface area: 84.656m?  
Clew height: 0.553m  
Mast rake: 1.739m

Battens

Position	Length	Roach	Angle	Luff	Leech	Full
84.392%	2.752m	1.385m	76.891?	14.601m	14.654m	Full
68.000%	4.478m	1.894m	76.891?	11.790m	11.808m	Full
52.000%	5.512m	1.824m	76.891?	9.048m	9.029m	Full
36.000%	6.158m	1.444m	76.891?	6.307m	6.251m	Full
20.000%	6.513m	0.829m	76.891?	3.567m	3.473m	Full

Reefing Points

1, Luff: 2.577m ; Leech: 2.564m ; Offset: 0.000m ; Number Eyelets: 0  
2, Luff: 5.156m ; Leech: 5.123m ; Offset: 0.000m ; Number Eyelets: 0  
3, Luff: 7.738m ; Leech: 7.672m ; Offset: 0.000m ; Number Eyelets: 0

Draft Stripes

1, Luff: 4.296m ; Leech: 3.761m ;  
2, Luff: 8.599m ; Leech: 8.086m ;  
3, Luff: 12.908m ; Leech: 12.489m ;

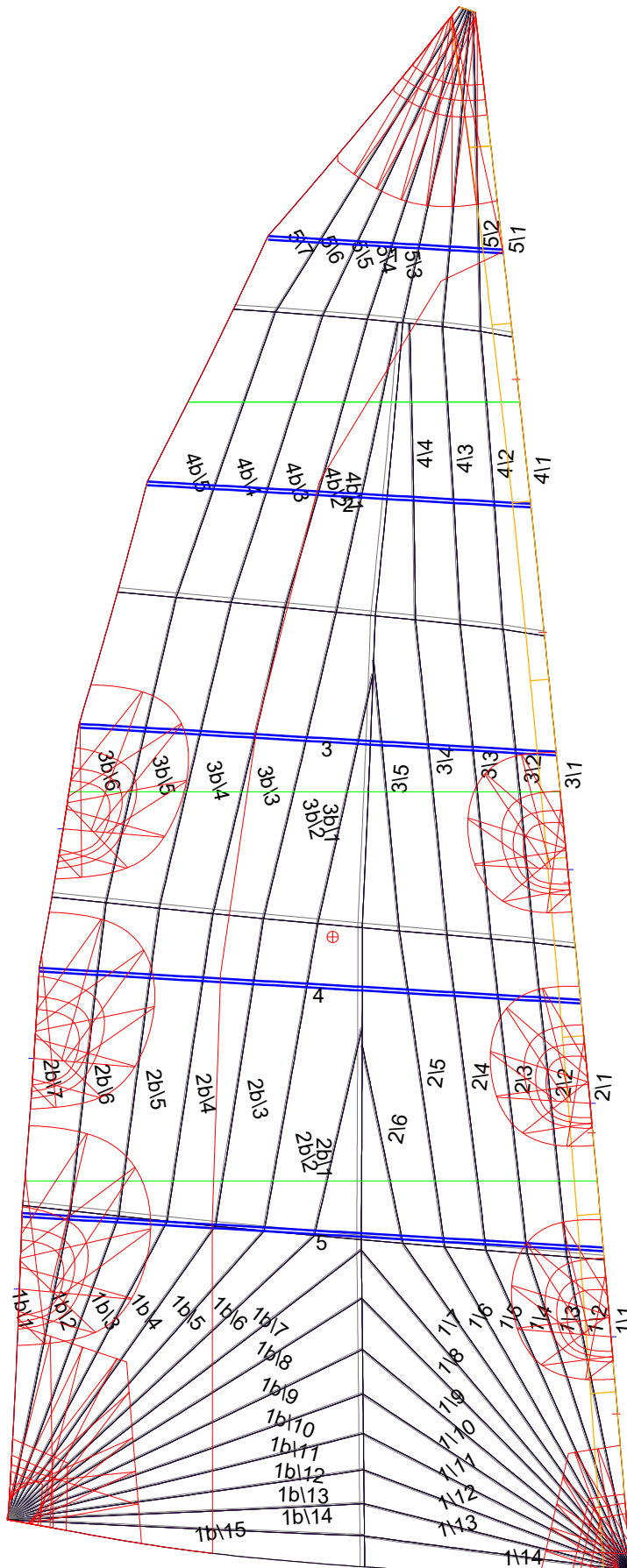
Luff Slides

1, Position: 1.725m  
2, Position: 4.831m  
3, Position: 7.596m  
4, Position: 10.361m  
5, Position: 13.161m

Luff Curve

		Fanned Luff (@ 5.00% [0.342m])	Before BSeam
17.225m,	0.000m	100% (17.226m) :	0.000m
15.079m,	-0.036m	90% (15.505m) :	0.077m
12.919m,	-0.062m	80% (13.780m) :	0.145m
10.754m,	-0.075m	70% (12.059m) :	0.197m
8.613m,	-0.078m	60% (10.336m) :	0.216m
6.418m,	-0.072m	50% (8.613m) :	0.211m
4.306m,	-0.058m	40% (6.890m) :	0.184m
2.147m,	-0.033m	30% (5.168m) :	0.144m
0.000m,	0.000m	20% (3.445m) :	0.096m
		10% (1.724m) :	0.045m
		0% (0.000m) :	0.000m

# Mainsail: 8001002 Gaute LEOPARD 48 MainsailV4.des



## Seam Allowances

	Split	Radial	Cross
Zone: 1/a	0.050m	0.016m	0.050m
Zone: 1/b	0.050m	0.016m	0.050m
Zone: 2/a	0.050m	0.016m	0.050m
Zone: 2/b	0.050m	0.016m	0.050m
Zone: 3/a	0.050m	0.016m	0.050m
Zone: 3/b	0.050m	0.016m	0.050m
Zone: 4/a	0.050m	0.016m	0.050m
Zone: 4/b	0.050m	0.016m	0.050m
Zone: 5	0.050m	0.016m	0.050m
Cover 1	0.030m	0.030m	0.030m

## Edge Excesses

	Luff	Leech	Foot
Sail:	0.000m	0.000m	0.000m
Cover 0	0.000m	0.000m	0.000m

## Total Seam Lengths (m)

Horizontal	20.79
Radial/Vertical	218.99
Bi-Radial Split	14.31

## Materials

Material	Area (m²)	Panels
Material 1	84.64	1\1,1\2,1\3,1\4,1\5 1\6,1\7,1\8,1\9,1\10 1\11,1\12,1\13,1\14,1b\1 1b\2,1b\3,1b\4,1b\5,1b\6 1b\7,1b\8,1b\9,1b\10,1b\11 1b\12,1b\13,1b\14,1b\15,2\1 2\2,2\3,2\4,2\5,2\6 2b\1,2b\2,2b\3,2b\4,2b\5 2b\6,2b\7,3\1,3\2,3\3 3\4,3\5,3b\1,3b\2,3b\3 3b\4,3b\5,3b\6,4\1,4\2 4\3,4\4,4b\1,4b\2,4b\3 4b\4,4b\5,5\1,5\2,5\3 5\4,5\5,5\6,5\7