

Genoa: 8000934 Ralf Motu 42 furlgen.des

Design Info
=====

Design File:
\\NAS\Engineering files\Queenie-Customer Order\Fareast Sails\2024 Orders\Need to be Confirmed\8000934 Ralf Motu

Initial Design Date: 9/10/2024
Boat:
Motu 42
Client:

Comments:

Design Data
=====

Genoa

Measurements

Luff geodesic: 15.060m
Leech geodesic: 14.372m
Foot geodesic: 7.600m
Headboard width: 0.050m
Luff perpendicular (HLP): 7.195m
Upper width (HUW): 0.793m
Three-quarter width (HTW): 1.597m
Half width (HHW): 3.376m
Quarter width (HQW): 5.268m
Foot median: 14.443m
ORC Headsail area: 52.350m?
IRC Headsail area: 52.156m?
Surface area: 52.755m?
Forestay height: 16.030m
J: 5.350m

Draft Stripes

1, Luff: 3.783m ; Leech: 3.437m ;
2, Luff: 7.565m ; Leech: 7.089m ;
3, Luff: 11.331m ; Leech: 10.689m ;

Luff Curve

15.057m, 0.000m
13.806m, 0.051m
12.422m, 0.092m
11.204m, 0.114m
9.787m, 0.122m
7.493m, 0.107m
4.894m, 0.073m
2.545m, 0.036m
0.000m, 0.000m

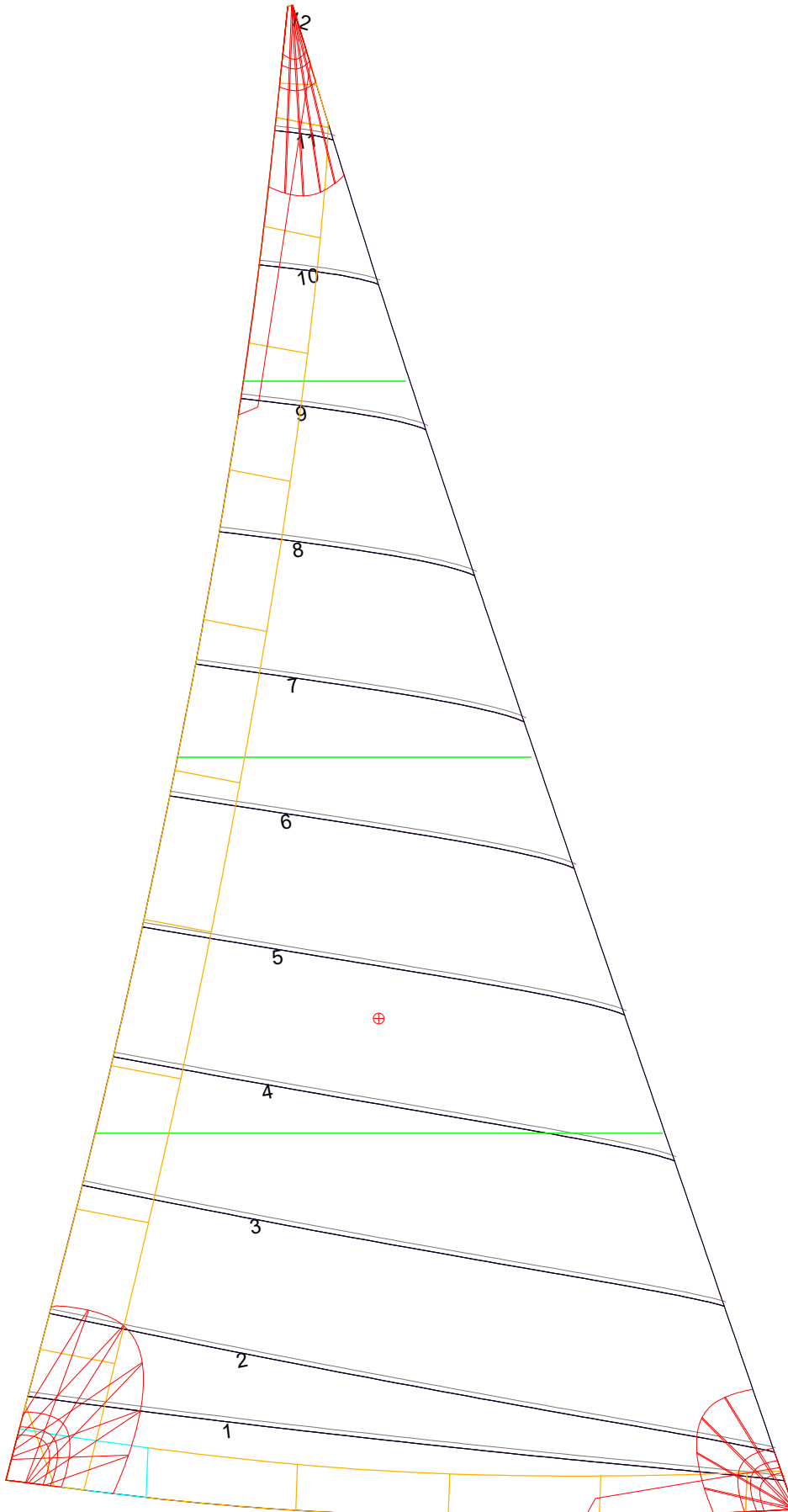
Fanned Luff (@ 5.00% [0.374m])

100% (15.057m) : 0.000m
90% (13.549m) : -0.062m
80% (12.048m) : -0.102m
70% (10.541m) : -0.120m
60% (9.035m) : -0.120m
50% (7.529m) : -0.109m
40% (6.023m) : -0.090m
30% (4.517m) : -0.069m
20% (3.012m) : -0.047m
10% (1.504m) : -0.025m
0% (0.000m) : 0.000m

Before BSeam

-0.000m
-0.022m
-0.025m
-0.010m
0.015m
0.040m
0.059m
0.066m
0.057m
0.029m
0.000m

Genoa: 8000934 Ralf Motu 42 furlgen.des



Seam Allowances

| Zone: | Split | Radial | Cross |
|---------|--------|--------|--------|
| Zone: 1 | 0.045m | 0.045m | 0.045m |
| Cover 1 | 0.025m | 0.025m | 0.025m |
| Cover 2 | 0.000m | 0.000m | 0.000m |
| Cover 3 | 0.000m | 0.000m | 0.000m |
| Cover 4 | 0.025m | 0.025m | 0.025m |

Edge Excesses

| Sail: | Luff | Leech | Foot |
|---------|--------|--------|--------|
| Sail: | 0.000m | 0.000m | 0.000m |
| Cover 0 | 0.070m | 0.070m | 0.100m |
| Cover 1 | 0.000m | 0.070m | 0.070m |
| Cover 2 | 0.000m | 0.070m | 0.070m |
| Cover 3 | 0.070m | 0.100m | 0.070m |

Total Seam Lengths (m)

| | |
|-----------------|-------|
| Horizontal | 45.07 |
| Radial/Vertical | 0.00 |
| Bi-Radial Split | 0.00 |

Materials

| Material | Area (m ²) | Panels |
|------------|------------------------|----------------------------------|
| Material 1 | 52.83 | 1,2,3,4,5 6,7,8,9,10 11,12 |