

Mainsail: 8000932 Trevor-1 Alajuela 38 MainsailV1.des

Design Info
=====

Design File:
\\NAS\Engineering files\Queenie-Customer Order\Fareast Sails\2024 Orders\Need to be Confirmed\8000932 Trevor A

Initial Design Date: 15/10/2024
Boat:
Alajuela 38
Client:

Comments:

Design Data
=====

Main

Measurements

Luff geodesic: 12.870m
Leech geodesic: 13.216m
Foot geodesic: 5.100m
Head geodesic: 0.135m
Upper width (MUW): 0.877m
Three-quarter width (MTW): 1.619m
Half width (MHW): 2.951m
Quarter width (MQW): 4.100m
Foot median: 12.957m
ORC Mainsail area: 36.314m?
Surface area: 37.000m?
Clew height: 0.605m
Mast rake: 0.091m

Battens

Position	Length	Roach	Angle	Luff	Leech	Full
80.000%	0.850m	0.170m	76.198?	10.270m	10.530m	
60.000%	1.250m	0.237m	76.198?	7.695m	7.898m	
40.000%	1.250m	0.201m	76.198?	5.123m	5.265m	
20.000%	1.250m	0.113m	76.198?	2.553m	2.633m	

Reefing Points

- 1, Luff: 1.450m ; Leech: 1.481m ; Offset: 0.000m ; Number Eyelets: 3
- 2, Luff: 3.100m ; Leech: 3.159m ; Offset: 0.000m ; Number Eyelets: 3
- 3, Luff: 5.200m ; Leech: 5.293m ; Offset: 0.000m ; Number Eyelets: 2

Draft Stripes

- 1, Luff: 4.368m ; Leech: 3.943m ;
- 2, Luff: 8.615m ; Leech: 8.488m ;

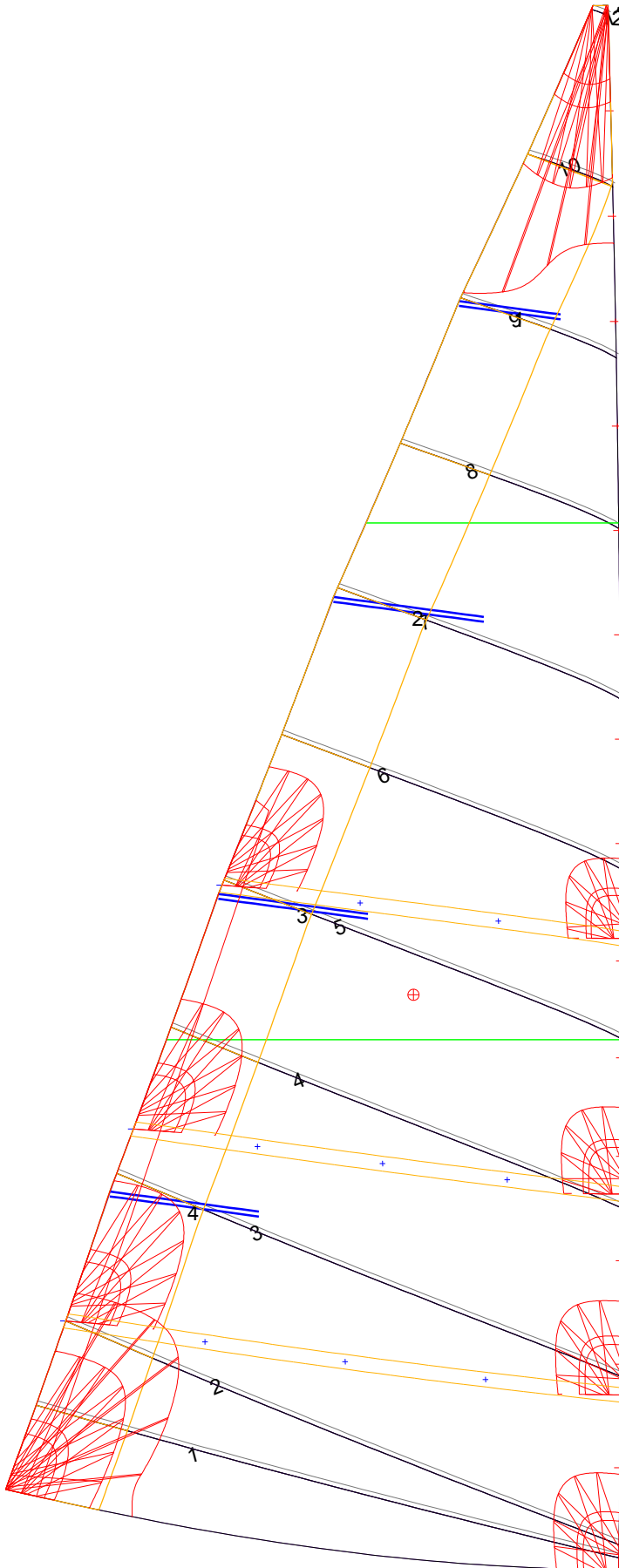
Luff Slides

- 1, Position: 0.851m
- 2, Position: 1.702m
- 3, Position: 2.553m
- 4, Position: 3.410m
- 5, Position: 4.218m
- 6, Position: 5.015m
- 7, Position: 5.981m
- 8, Position: 6.838m
- 9, Position: 7.695m
- 10, Position: 8.554m
- 11, Position: 9.412m
- 12, Position: 10.270m
- 13, Position: 11.137m
- 14, Position: 12.003m

Luff Curve

		Fanned Luff (@ 5.00% [0.252m])	Before BSeam
12.870m,	0.000m	100% (12.870m) :	0.000m
11.266m,	-0.030m	90% (11.584m) :	0.018m
9.652m,	-0.051m	80% (10.296m) :	0.033m
8.035m,	-0.060m	70% (9.009m) :	0.041m
6.435m,	-0.061m	60% (7.722m) :	0.044m
4.795m,	-0.057m	50% (6.435m) :	0.043m
3.217m,	-0.045m	40% (5.148m) :	0.040m
1.604m,	-0.026m	30% (3.861m) :	0.033m
0.000m,	0.000m	20% (2.574m) :	0.023m
		10% (1.288m) :	0.011m
		0% (0.000m) :	0.000m

Mainsail: 8000932 Trevor-1 Alajuela 38 MainsailV1.des



Seam Allowances			
	Split	Radial	Cross
Zone: 1	0.038m	0.038m	0.038m
Cover 1	0.038m	0.038m	0.038m

Edge Excesses			
	Luff	Leech	Foot
Sail:	0.000m	0.000m	0.000m
Cover 0	0.000m	0.000m	0.000m

Total Seam Lengths (m)

Horizontal	32.44
Radial/Vertical	0.00
Bi-Radial Split	0.00

Materials

Material	Area (m ²)	Panels
Material 1	37.03	1,2,3,4,5 6,7,8,9,10 11,12