

Genoa: 8000929 Larry Niagara 35 Furljib.des

Design Info
=====

Design File:
\\NAS\Engineering files\Queenie-Customer Order\Fareast Sails\2024 Orders\Need to be Confirmed\8000929 Larry Nia

Initial Design Date: 9/10/2024
Boat:
Niagara 35
Client:

Comments:

Design Data
=====

Genoa

Measurements

Luff geodesic:	42.402Ft
Leech geodesic:	39.153Ft
Foot geodesic:	18.477Ft
Headboard width:	0.125Ft
Luff perpendicular (HLP):	17.138Ft
Upper width (HUW):	1.878Ft
Three-quarter width (HTW):	3.740Ft
Half width (HHW):	7.887Ft
Quarter width (HQW):	12.374Ft
Foot median:	40.129Ft
ORC Headsail area:	347.466Ft?
IRC Headsail area:	346.772Ft?
Surface area:	347.597Ft?
Forestay height:	45.000Ft
J:	15.580Ft

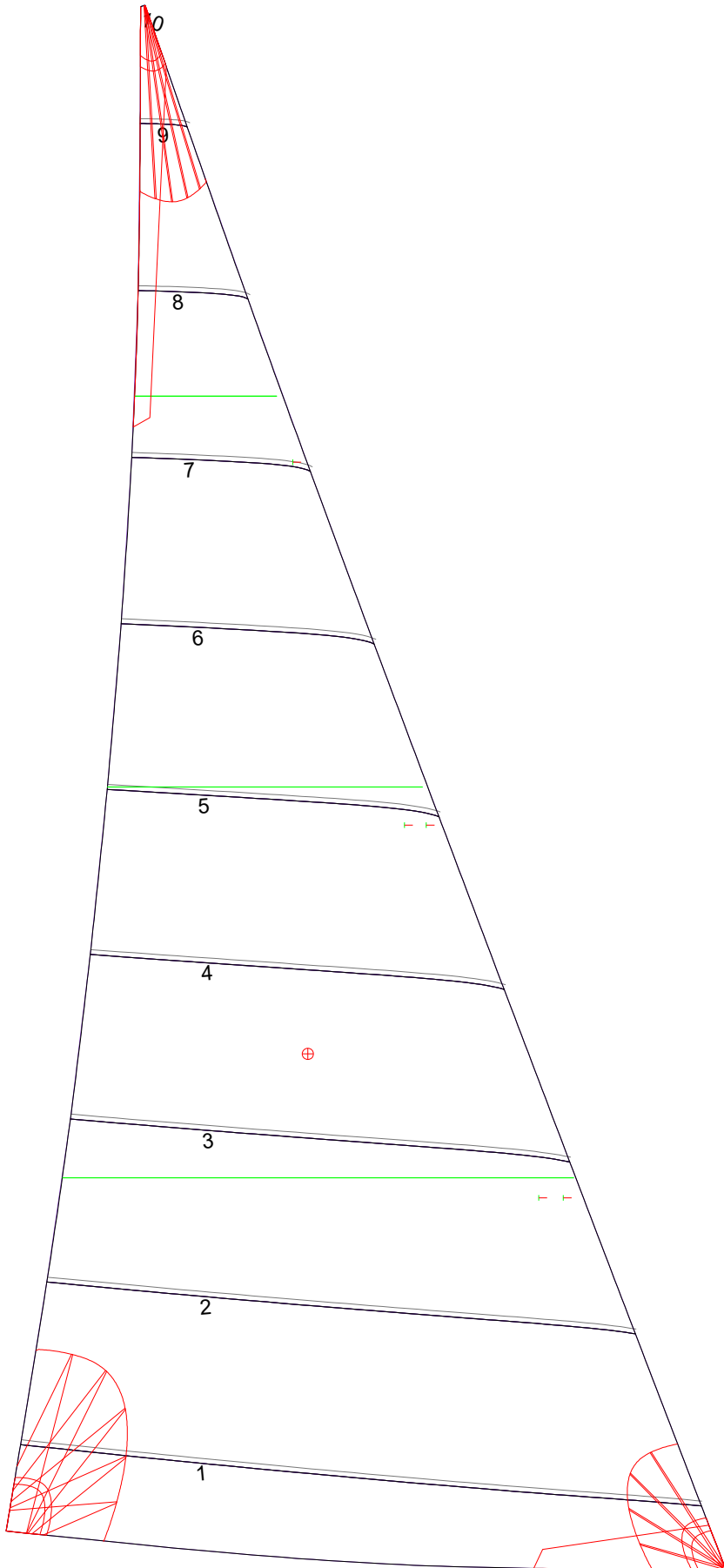
Draft Stripes

1, Luff: 10.657Ft ; Leech: 9.155Ft ;
2, Luff: 21.311Ft ; Leech: 19.151Ft ;
3, Luff: 31.914Ft ; Leech: 29.063Ft ;

Luff Curve

		Fanned Luff (@ 5.00% [0.914Ft])	Before BSeam
42.393Ft,	0.000Ft	100% (42.395Ft) :	0.000Ft
38.871Ft,	0.144Ft	90% (38.151Ft) :	-0.153Ft
34.975Ft,	0.260Ft	80% (33.922Ft) :	-0.266Ft
31.545Ft,	0.320Ft	70% (29.678Ft) :	-0.324Ft
27.557Ft,	0.342Ft	60% (25.439Ft) :	-0.335Ft
21.097Ft,	0.301Ft	50% (21.198Ft) :	-0.311Ft
13.778Ft,	0.204Ft	40% (16.959Ft) :	-0.263Ft
7.166Ft,	0.102Ft	30% (12.718Ft) :	-0.205Ft
0.000Ft,	0.000Ft	20% (8.482Ft) :	-0.140Ft
		10% (4.235Ft) :	-0.074Ft
		0% (0.000Ft) :	0.000Ft

Genoa: 8000929 Larry Niagara 35 Furljib.des



Seam Allowances			
Zone: 1	Split	Radial	Cross
	0.125Ft	0.125Ft	0.125Ft

Edge Excesses			
Sail:	Luff	Leech	Foot
	0.000Ft	0.000Ft	0.000Ft

Total Seam Lengths (Ft)

Horizontal	81.99
Radial/Vertical	0.00
Bi-Radial Split	0.00

Materials

Material	Area (Ft ²)	Panels
Material 1	348.51	1,2,3,4,5 6,7,8,9,10