

Mainsail: 8000928 Rob-1 Farr 1220 fullbattmain.des

Design Info
=====

Design File:
\\NAS\Engineering files\Queenie-Customer Order\Fareast Sails\2024 Orders\Need to be Confirmed\8000928 Rob Farr

Initial Design Date: 9/10/2024
Boat:
Farr 1220
Client:

Comments:
tack angle 88.5 deg

Design Data
=====

Main

Measurements

Luff geodesic: 12.593m
Leech geodesic: 13.552m
Foot geodesic: 5.200m
Head geodesic: 0.135m
Upper width (MUW): 0.971m
Three-quarter width (MTW): 1.791m
Half width (MHW): 3.156m
Quarter width (MQW): 4.275m
Foot median: 12.979m
ORC Mainsail area: 37.439m?
Surface area: 38.592m?
Clew height: 0.100m
Mast rake: 0.000m

Battens

Position	Length	Roach	Angle	Luff	Leech	Full
80.000%	1.570m	0.415m	68.941?	10.073m	10.791m	Full
60.000%	2.735m	0.476m	68.941?	7.554m	8.093m	Full
40.000%	3.673m	0.365m	68.941?	5.036m	5.396m	Full
20.000%	4.496m	0.204m	68.941?	2.518m	2.698m	Full

Reefing Points

1, Luff: 1.270m ; Leech: 1.339m ; Offset: 0.000m ; Number Eyelets: 0
2, Luff: 3.110m ; Leech: 3.272m ; Offset: 0.000m ; Number Eyelets: 0
3, Luff: 5.760m ; Leech: 6.065m ; Offset: 0.000m ; Number Eyelets: 0

Draft Stripes

1, Luff: 4.155m ; Leech: 4.267m ;
2, Luff: 8.310m ; Leech: 8.708m ;

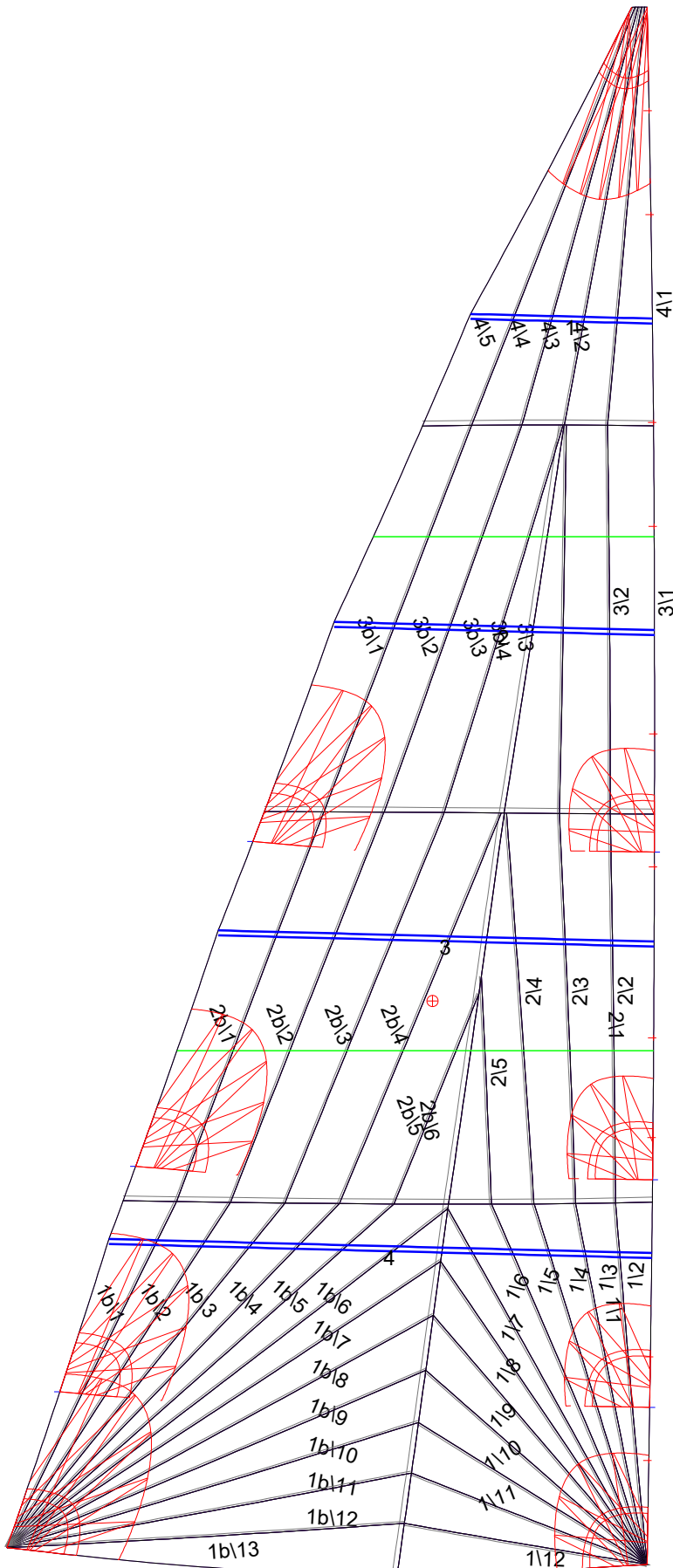
Luff Slides

1, Position: 0.839m
2, Position: 1.678m
3, Position: 3.452m
4, Position: 4.257m
5, Position: 5.640m
6, Position: 6.715m
7, Position: 8.394m
8, Position: 9.234m
9, Position: 10.913m
10, Position: 11.753m

Luff Curve

		Fanned Luff (@ 5.00% [0.259m])	Before BSeam
12.593m,	0.000m	100% (12.593m) :	0.000m
11.023m,	-0.029m	90% (11.334m) :	0.051m
9.444m,	-0.050m	80% (10.074m) :	0.096m
7.862m,	-0.059m	70% (8.815m) :	0.126m
6.296m,	-0.060m	60% (7.556m) :	0.144m
4.692m,	-0.055m	50% (6.297m) :	0.149m
3.148m,	-0.044m	40% (5.037m) :	0.144m
1.569m,	-0.025m	30% (3.778m) :	0.126m
0.000m,	0.000m	20% (2.519m) :	0.093m
		10% (1.259m) :	0.048m
		0% (0.000m) :	0.000m

Mainsail: 8000928 Rob-1 Farr 1220 fullbattmain.des



Seam Allowances

Zone:	Split	Radial	Cross
Zone: 1/a	0.040m	0.016m	0.040m
Zone: 1/b	0.040m	0.016m	0.040m
Zone: 2/a	0.040m	0.016m	0.040m
Zone: 2/b	0.040m	0.016m	0.040m
Zone: 3/a	0.040m	0.016m	0.040m
Zone: 3/b	0.040m	0.016m	0.040m
Zone: 4	0.040m	0.016m	0.040m

Edge Excesses

Sail:	Luff	Leech	Foot
Sail:	0.000m	0.000m	0.000m

Total Seam Lengths (m)

Horizontal	9.69
Radial/Vertical	132.70
Bi-Radial Split	9.77

Materials

Material	Area (m ²)	Panels
Material 1	38.63	1\1,1\2,1\3,1\4,1\5 1\6,1\7,1\8,1\9,1\10 1\11,1\12,1b\1,1b\2,1b\3 1b\4,1b\5,1b\6,1b\7,1b\8 1b\9,1b\10,1b\11,1b\12,1b\13 2\1,2\2,2\3,2\4,2\5 2b\6,2b\5,2b\4,2b\3,2b\2 2b\1,3\1,3\2,3\3,3b\4 3b\3,3b\2,3b\1,4\1,4\2 4\3,4\4,4\5