

# Genoa: 8000920 Colette Elan Impression 434 Furlgen.des

## Boding Sails / Jonas BodingDesign: Azure Project v5.206, Sandy Goodall

Design Info  
 =====

Design File:  
 \\NAS\Engineering files\Queenie-Customer Order\Fareast Sails\2024 Orders\Need to be Confirmed\8000920 Colette E

Job No: BSElan434InglanderY16w33D01  
 Initial Design Date: 16/8/2016  
 Boat:  
 Elan 434 Impression  
 Client:  
 Boding Sails / Jonas Boding  
 Design: Azure Project v5.206, Sandy Goodall

Comments:  
 Elan 434 Impression, 9/10 rig, MXL furlgen WIDE, 49.1 m<sup>2</sup>  
 Fiber: 12 x Technora Blkl 3300. Target dpi = 17,000.  
 Poly sqr scrim. Taffeta 1 side.  
 WIDE .dxf panels, 4 x 6.0 cm seams, no split head  
 I = 15.54 m, J = 4.80 m  
 Luff = 14.95 m, Leech = 14.55 m, Foot = 7.04 m  
 LP = 6.75 m (141%%)  
 Extra long patches at top + tack

Design Data  
 =====

### Genoa

#### Measurements

|                            |                      |
|----------------------------|----------------------|
| Luff geodesic:             | 14.750m              |
| Leech geodesic:            | 14.650m              |
| Foot geodesic:             | 6.700m               |
| Headboard width:           | 0.045m               |
| Luff perpendicular (HLP):  | 6.517m               |
| Upper width (HUW):         | 0.713m               |
| Three-quarter width (HTW): | 1.424m               |
| Half width (HHW):          | 3.042m               |
| Quarter width (HQW):       | 4.743m               |
| Foot median:               | 14.538m              |
| ORC Headsail area:         | 46.227m <sup>2</sup> |
| IRC Headsail area:         | 46.108m <sup>2</sup> |
| Surface area:              | 46.496m <sup>2</sup> |
| Forestay height:           | 15.900m              |
| J:                         | 4.780m               |

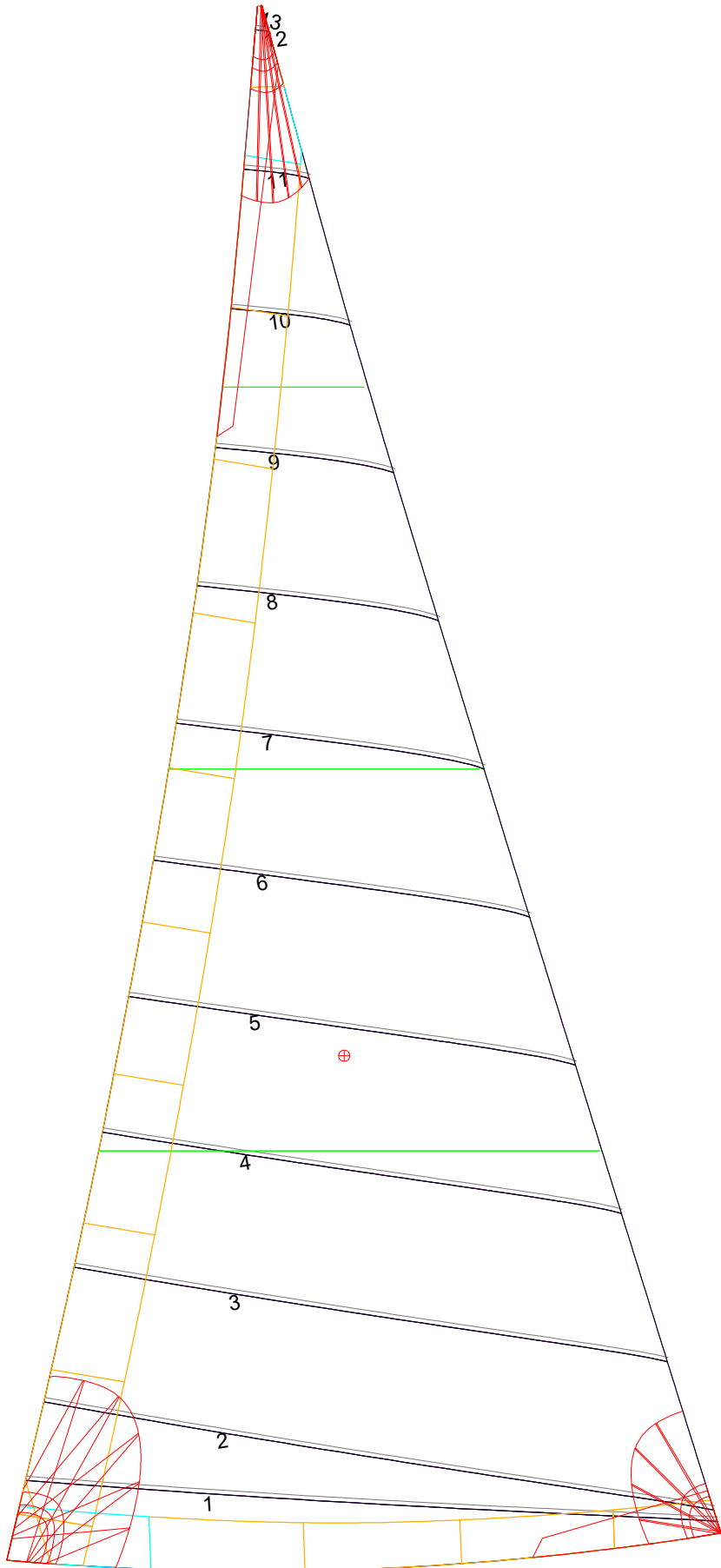
#### Draft Stripes

1, Luff: 3.703m ; Leech: 3.905m ;  
 2, Luff: 7.406m ; Leech: 7.490m ;  
 3, Luff: 11.094m ; Leech: 11.036m ;

#### Luff Curve

|          |        | Fanned Luff (@ 5.00% [0.330m]) | Before BSeam |
|----------|--------|--------------------------------|--------------|
| 14.747m, | 0.000m | 100% (14.747m) :               | 0.000m       |
| 13.522m, | 0.050m | 90% (13.270m) :                | -0.020m      |
| 12.166m, | 0.090m | 80% (11.801m) :                | -0.033m      |
| 10.973m, | 0.111m | 70% (10.324m) :                | -0.020m      |
| 9.586m,  | 0.119m | 60% (8.849m) :                 | 0.005m       |
| 7.339m,  | 0.105m | 50% (7.374m) :                 | 0.025m       |
| 4.793m,  | 0.071m | 40% (5.899m) :                 | 0.036m       |
| 2.493m,  | 0.035m | 30% (4.424m) :                 | 0.037m       |
| 0.000m,  | 0.000m | 20% (2.950m) :                 | 0.030m       |
|          |        | 10% (1.473m) :                 | 0.016m       |
|          |        | 0% (0.000m) :                  | 0.000m       |

# Genoa: 8000920 Colette Elan Impression 434 Furlgen.des Boding Sails / Jonas BodingDesign: Azure Project v5.206, Sandy Goodall



## Seam Allowances

| Zone:   | Split  | Radial | Cross  |
|---------|--------|--------|--------|
| Zone: 1 | 0.040m | 0.040m | 0.040m |
| Cover 1 | 0.025m | 0.025m | 0.025m |
| Cover 2 | 0.025m | 0.025m | 0.025m |
| Cover 3 | 0.000m | 0.000m | 0.000m |
| Cover 4 | 0.000m | 0.000m | 0.000m |

## Edge Excesses

| Sail:   | Luff   | Leech  | Foot   |
|---------|--------|--------|--------|
| Sail:   | 0.000m | 0.000m | 0.000m |
| Cover 0 | 0.070m | 0.100m | 0.070m |
| Cover 1 | 0.070m | 0.070m | 0.100m |
| Cover 2 | 0.000m | 0.070m | 0.070m |
| Cover 3 | 0.000m | 0.070m | 0.070m |

## Total Seam Lengths (m)

|                 |       |
|-----------------|-------|
| Horizontal      | 40.76 |
| Radial/Vertical | 0.00  |
| Bi-Radial Split | 0.00  |

## Materials

| Material   | Area (m <sup>2</sup> ) | Panels                              |
|------------|------------------------|-------------------------------------|
| Material 1 | 46.62                  | 1,2,3,4,5<br>6,7,8,9,10<br>11,12,13 |