

# Genoa: 8000907 Serge Lagoon 400 S2 Headsail.des

Design Info  
=====

Design File:  
\\NAS\Engineering files\Queenie-Customer Order\Fareast Sails\2024 Orders\Need to be Confirmed\8000907 Serge La

Initial Design Date: 11/9/2024  
Boat:  
Lagoon 400 S2  
Client:

Comments:

Design Data  
=====

## Genoa

### Measurements

Luff geodesic: 47.183Ft  
Leech geodesic: 42.580Ft  
Foot geodesic: 18.250Ft  
Headboard width: 0.148Ft  
Luff perpendicular (HLP): 16.538Ft  
Upper width (HUW): 1.811Ft  
Three-quarter width (HTW): 3.582Ft  
Half width (HHW): 7.565Ft  
Quarter width (HQW): 11.902Ft  
Foot median: 44.493Ft  
ORC Headsail area: 372.062Ft?  
IRC Headsail area: 371.295Ft?  
Surface area: 374.166Ft?  
Forestay height: 50.394Ft  
J: 13.451Ft

### Draft Stripes

1, Luff: 11.841Ft ; Leech: 8.047Ft ;  
2, Luff: 23.679Ft ; Leech: 19.591Ft ;  
3, Luff: 35.476Ft ; Leech: 31.018Ft ;

### Luff Curve

47.173Ft, 0.000Ft  
43.253Ft, 0.160Ft  
38.918Ft, 0.289Ft  
35.102Ft, 0.356Ft  
30.664Ft, 0.381Ft  
23.475Ft, 0.335Ft  
15.331Ft, 0.227Ft  
7.974Ft, 0.114Ft  
0.000Ft, 0.000Ft

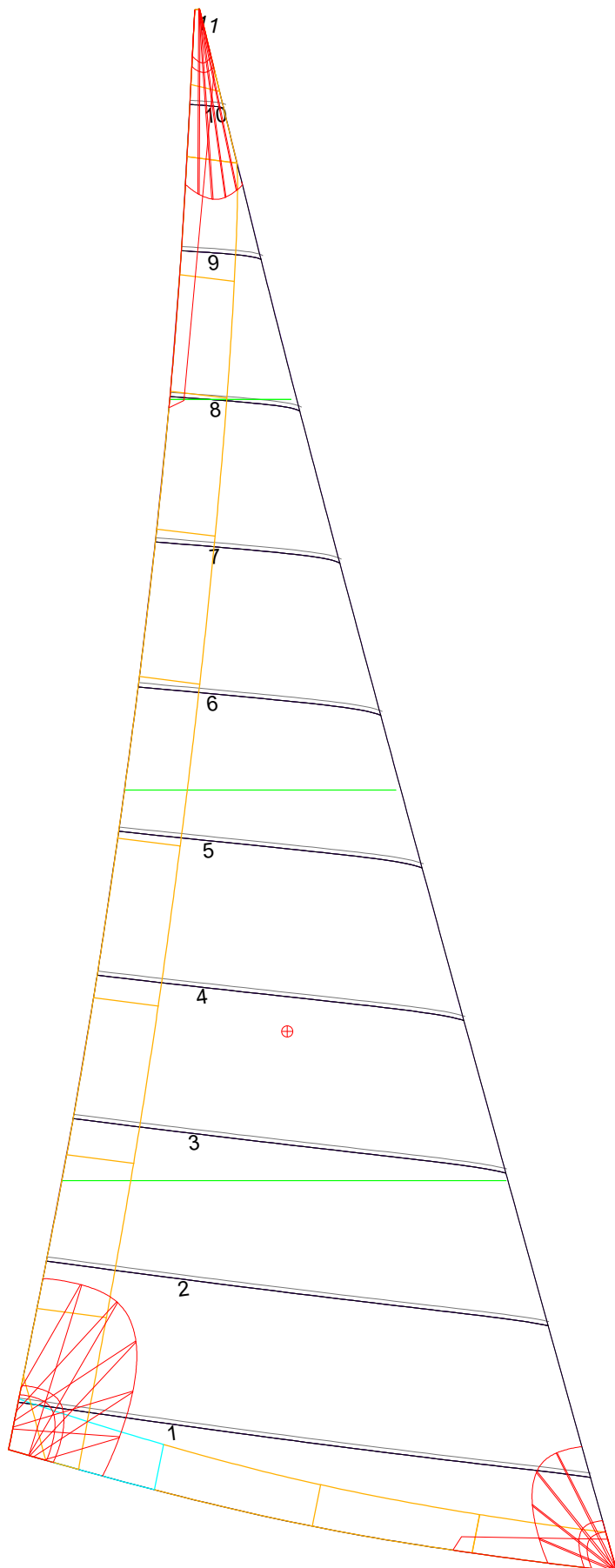
### Fanned Luff (@ 5.00% [0.887Ft])

100% (47.175Ft) : 0.000Ft  
90% (42.460Ft) : -0.176Ft  
80% (37.743Ft) : -0.305Ft  
70% (33.025Ft) : -0.370Ft  
60% (28.307Ft) : -0.383Ft  
50% (23.589Ft) : -0.353Ft  
40% (18.871Ft) : -0.297Ft  
30% (14.153Ft) : -0.229Ft  
20% (9.437Ft) : -0.155Ft  
10% (4.715Ft) : -0.081Ft  
0% (0.000Ft) : 0.000Ft

### Before BSeam

-0.000Ft  
-0.048Ft  
-0.063Ft  
-0.041Ft  
0.002Ft  
0.049Ft  
0.083Ft  
0.095Ft  
0.092Ft  
0.062Ft  
0.000Ft

# Genoa: 8000907 Serge Lagoon 400 S2 Headsail.des



## Seam Allowances

Zone:	Split	Radial	Cross
Zone: 1	0.000Ft	0.000Ft	0.125Ft
Cover 1	0.082Ft	0.082Ft	0.082Ft
Cover 2	0.000Ft	0.000Ft	0.000Ft
Cover 3	0.000Ft	0.000Ft	0.000Ft
Cover 4	0.082Ft	0.082Ft	0.082Ft

## Edge Excesses

Sail:	Luff	Leech	Foot
Sail:	0.000Ft	0.000Ft	0.000Ft
Cover 0	0.230Ft	0.230Ft	0.328Ft
Cover 1	0.000Ft	0.230Ft	0.230Ft
Cover 2	0.000Ft	0.230Ft	0.230Ft
Cover 3	0.230Ft	0.328Ft	0.230Ft

## Total Seam Lengths (Ft)

Horizontal	86.91
Radial/Vertical	0.00
Bi-Radial Split	0.00

## Materials

Material	Area (Ft <sup>2</sup> )	Panels
Material 1	375.19	1,2,3,4,5 6,7,8,9,10 11