

Genoa: 8000823 Diana-2 Ross 830 Headsail.des

Design Info
=====

Design File:
\\NAS\Engineering files\Queenie-Customer Order\Fareast Sails\2024 Orders\Need to be Confirmed\8000823 Diana R

Initial Design Date: 20/9/2024
Boat:

Comments:

Client:

Design Data
=====

Genoa

Measurements

Luff geodesic:	8.220m
Leech geodesic:	7.588m
Foot geodesic:	2.664m
Headboard width:	0.040m
Luff perpendicular (HLP):	2.464m
Upper width (HUW):	0.283m
Three-quarter width (HTW):	0.541m
Half width (HHW):	1.118m
Quarter width (HQW):	1.768m
Foot median:	7.854m
ORC Headsail area:	9.662m?
IRC Headsail area:	9.636m?
Surface area:	9.665m?
Forestay height:	8.690m
J:	2.640m

Draft Stripes

- 1, Luff: 2.722m ; Leech: 2.306m ;
- 2, Luff: 5.440m ; Leech: 4.899m ;

Luff Curve

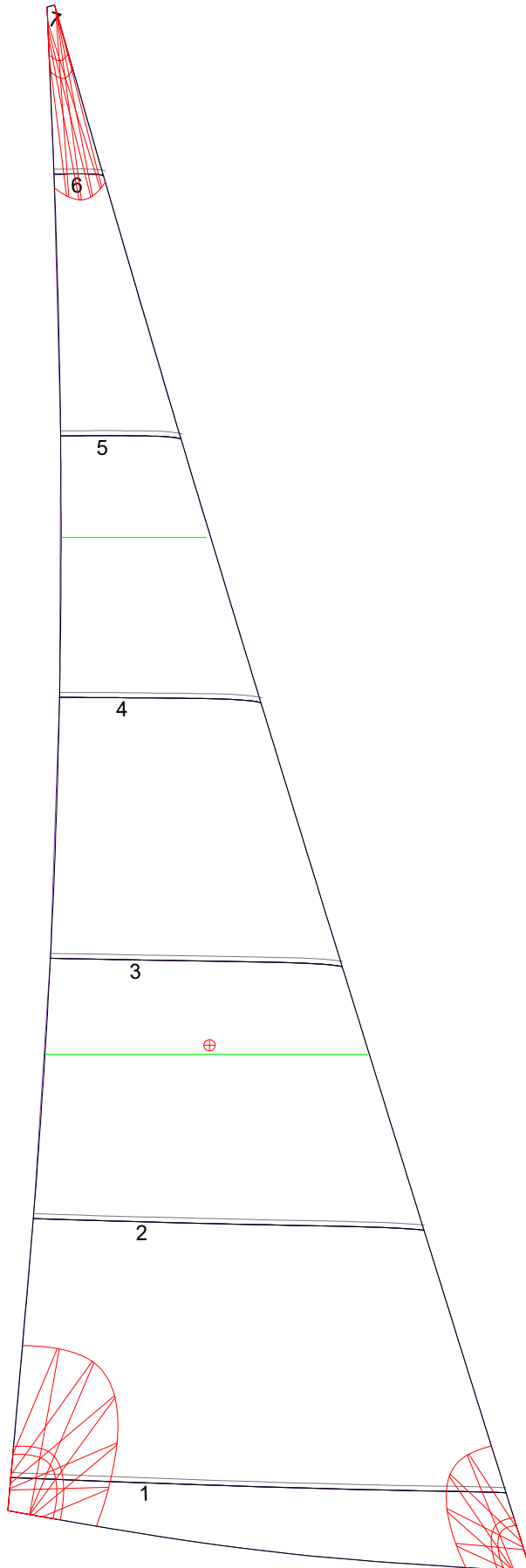
8.219m,	0.000m
7.536m,	0.021m
6.781m,	0.037m
6.116m,	0.046m
5.343m,	0.049m
4.090m,	0.043m
2.671m,	0.029m
1.389m,	0.015m
0.000m,	0.000m

Fanned Luff (@ 5.00% [0.131m])

100% (8.219m) :	-0.000m	-0.000m
90% (7.397m) :	-0.022m	-0.004m
80% (6.576m) :	-0.038m	-0.005m
70% (5.754m) :	-0.046m	-0.002m
60% (4.932m) :	-0.048m	0.004m
50% (4.110m) :	-0.044m	0.010m
40% (3.288m) :	-0.038m	0.014m
30% (2.466m) :	-0.030m	0.016m
20% (1.644m) :	-0.020m	0.015m
10% (0.821m) :	-0.010m	0.010m
0% (0.000m) :	0.000m	0.000m

Before BSeam

Genoa: 8000823 Diana-2 Ross 830 Headsail.des



Seam Allowances			
Zone: 1	Split	Radial	Cross
	0.000m	0.000m	0.025m

Edge Excesses			
Sail:	Luff	Leech	Foot
	0.000m	0.000m	0.000m

Total Seam Lengths (m)

Horizontal	8.06
Radial/Vertical	0.00
Bi-Radial Split	0.00

Materials

Material	Area (m ²)	Panels
Material 1	9.70	1,2,3,4,5 6,7