

Mainsail: 8000801 Liav-1 Jeanneau 45 fullbattmain.des

Design Info
=====

Design File:
\\NAS\Engineering files\Queenie-Customer Order\Fareast Sails\2024 Orders\Need to be Confirmed\8000801 Liav Jean

Initial Design Date: 8/8/2024
Boat:
Jeanneau 45
Client:

Comments:

Design Data
=====

Main

Measurements

Luff geodesic: 14.276m
Leech geodesic: 14.890m
Foot geodesic: 4.485m
Head geodesic: 0.135m
Upper width (MUW): 0.848m
Three-quarter width (MTW): 1.547m
Half width (MHW): 2.768m
Quarter width (MQW): 3.735m
Foot median: 14.552m
ORC Mainsail area: 36.982m?
Surface area: 37.750m?
Clew height: 0.100m
Mast rake: 0.000m

Battens

Position	Length	Roach	Angle	Luff	Leech	Full
80.000%	1.316m	0.315m	73.981?	11.420m	11.878m	Full
60.000%	2.360m	0.400m	73.981?	8.564m	8.908m	Full
40.000%	3.222m	0.353m	73.981?	5.709m	5.939m	Full
20.000%	3.913m	0.204m	73.981?	2.854m	2.969m	Full

Reefing Points

- 1, Luff: 1.598m ; Leech: 1.645m ; Offset: 0.000m ; Number Eyelets: 3
- 2, Luff: 3.354m ; Leech: 3.447m ; Offset: 0.000m ; Number Eyelets: 3
- 3, Luff: 5.852m ; Leech: 6.017m ; Offset: 0.000m ; Number Eyelets: 2

Draft Stripes

- 1, Luff: 4.710m ; Leech: 4.753m ;
- 2, Luff: 9.420m ; Leech: 9.669m ;

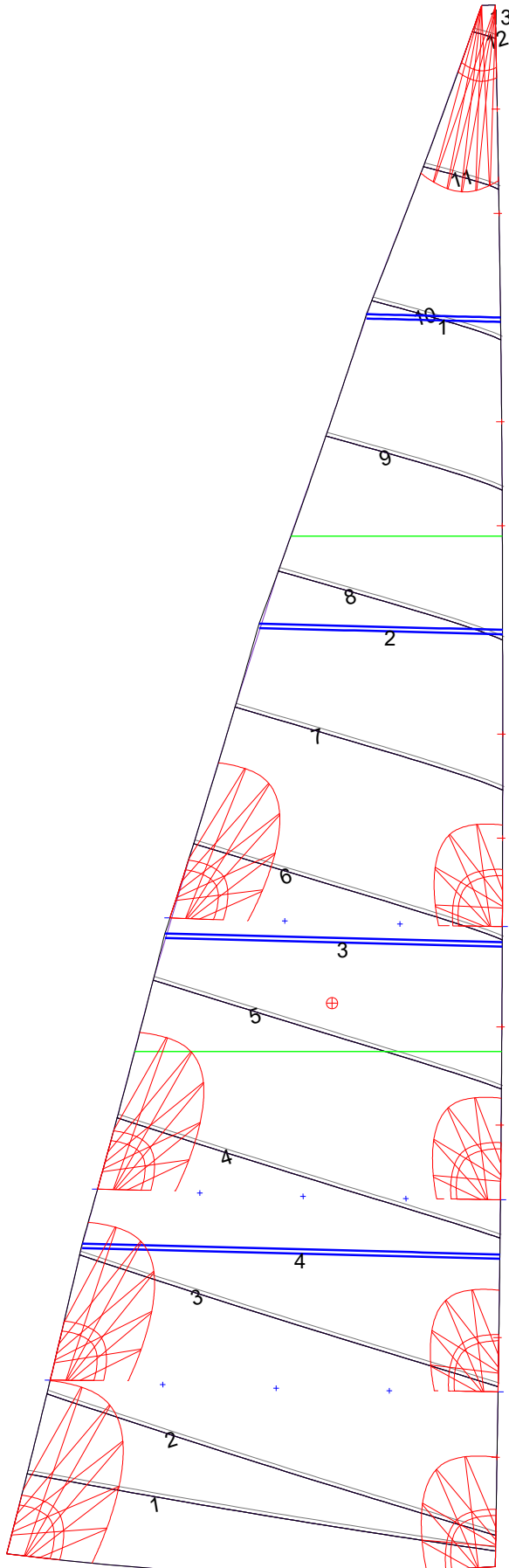
Luff Slides

- 1, Position: 1.000m
- 2, Position: 2.095m
- 3, Position: 4.038m
- 4, Position: 4.933m
- 5, Position: 6.660m
- 6, Position: 7.612m
- 7, Position: 9.516m
- 8, Position: 10.468m
- 9, Position: 12.372m
- 10, Position: 13.324m

Luff Curve

		Fanned Luff (@ 5.00% [0.223m])	Before BSeam
14.276m,	0.000m	100% (14.276m) :	0.000m
12.497m,	-0.033m	90% (12.849m) :	0.052m
10.707m,	-0.057m	80% (11.421m) :	0.097m
8.912m,	-0.067m	70% (9.993m) :	0.128m
7.138m,	-0.068m	60% (8.566m) :	0.146m
5.319m,	-0.063m	50% (7.138m) :	0.151m
3.569m,	-0.050m	40% (5.710m) :	0.146m
1.779m,	-0.029m	30% (4.283m) :	0.125m
0.000m,	0.000m	20% (2.855m) :	0.091m
		10% (1.428m) :	0.047m
		0% (0.000m) :	0.000m

Mainsail: 8000801 Liav-1 Jeanneau 45 fullbattmain.des



Seam Allowances			
Zone: 1	Split	Radial	Cross
	0.035m	0.035m	0.035m

Edge Excesses			
Sail:	Luff	Leech	Foot
	0.000m	0.000m	0.000m

Total Seam Lengths (m)

Horizontal	32.18
Radial/Vertical	0.00
Bi-Radial Split	0.00

Materials

Material	Area (m ²)	Panels
Material 1	37.76	1,2,3,4,5 6,7,8,9,10 11,12,13