

# Mainsail: 8000611 Pierre-James-2 Crealock37 MizzenV1.des

Design Info  
=====

Design File:  
\\NAS\Engineering files\Queenie-Customer Order\Fareast Sails\2024 Orders\Need to be Confirmed\8000611 Pierre-Ja

Initial Design Date: 12/7/2024  
Boat:  
Crealock 37  
Client:

Comments:

Design Data  
=====

Main

Measurements

Luff geodesic: 5.128m  
Leech geodesic: 5.306m  
Foot geodesic: 1.653m  
Head geodesic: 0.105m  
Upper width (MUW): 0.361m  
Three-quarter width (MTW): 0.623m  
Half width (MHW): 1.053m  
Quarter width (MQW): 1.389m  
Foot median: 5.211m  
ORC Mainsail area: 5.054m?  
Surface area: 5.188m?  
Clew height: 0.099m  
Mast rake: 0.000m

Battens

Position	Length	Roach	Angle	Luff	Leech	Full
80.000%	0.552m	0.101m	72.926?	4.121m	4.233m	Full
60.000%	0.919m	0.138m	72.926?	3.115m	3.175m	Full
40.000%	0.500m	0.123m	72.926?	2.110m	2.117m	
20.000%	0.500m	0.071m	72.926?	1.104m	1.058m	

Reefing Points

1, Luff: 0.626m ; Leech: 0.637m ; Offset: 0.000m ; Number Eyelets: 2

Draft Stripes

1, Luff: 2.564m ; Leech: 2.549m ;

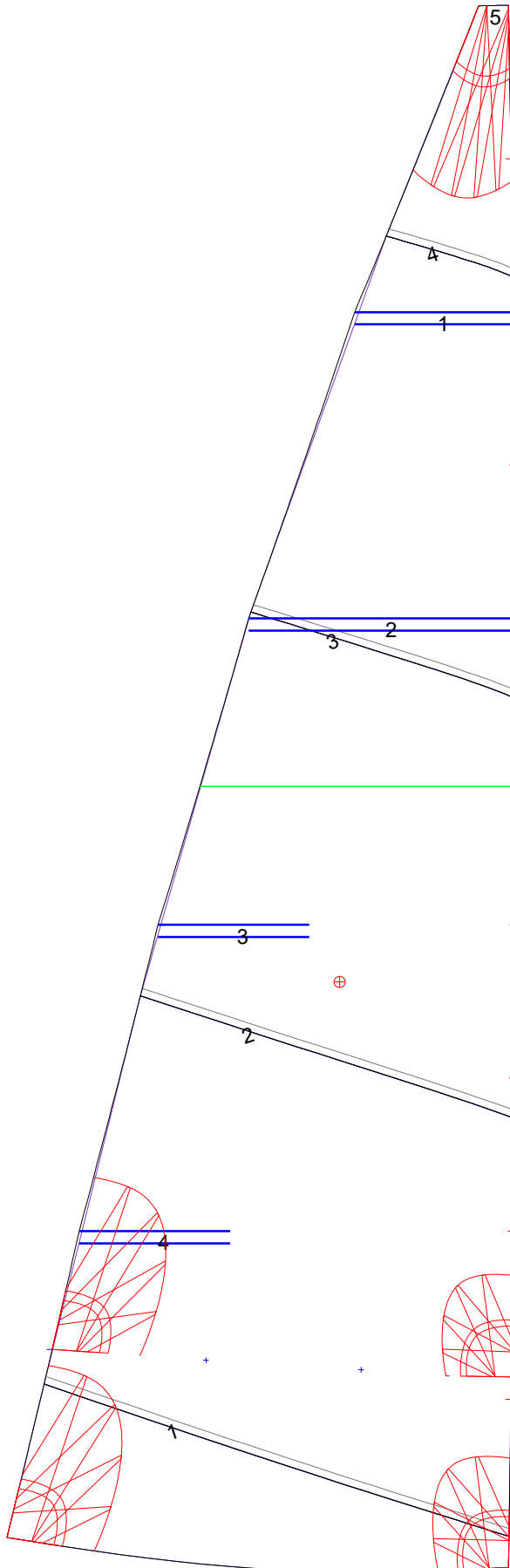
Luff Slides

- 1, Position: 0.552m
- 2, Position: 1.104m
- 3, Position: 1.607m
- 4, Position: 2.110m
- 5, Position: 2.613m
- 6, Position: 3.618m
- 7, Position: 4.624m

Luff Curve

		Fanned Luff (@ 5.00% [0.082m])	Before BSeam
5.128m,	0.000m	100% (5.128m) :	0.000m
4.489m,	-0.011m	90% (4.615m) :	0.007m
3.846m,	-0.019m	80% (4.102m) :	0.034m
3.201m,	-0.023m	70% (3.590m) :	0.045m
2.564m,	-0.023m	60% (3.077m) :	0.050m
1.911m,	-0.022m	50% (2.564m) :	0.017m
1.282m,	-0.017m	40% (2.051m) :	0.016m
0.639m,	-0.010m	30% (1.538m) :	0.013m
0.000m,	0.000m	20% (1.026m) :	0.010m
		10% (0.513m) :	0.005m
		0% (0.000m) :	0.000m

# Mainsail: 8000611 Pierre-James-2 Crealock37 MizzenV1.des



Seam Allowances			
Zone: 1	Split	Radial	Cross
	0.025m	0.025m	0.025m

Edge Excesses			
Sail:	Luff	Leech	Foot
	0.000m	0.000m	0.000m

Total Seam Lengths (m)

Horizontal	4.36
Radial/Vertical	0.00
Bi-Radial Split	0.00

Materials

Material	Area (m <sup>2</sup> )	Panels
Material 1	5.17	1,2,3,4,5