

Genoa: 8000607 Dorian-3 Trans World 41 120% furlgen.des Fareast Sails

Design Info
=====

Design File:
\\NAS\Engineering files\Queenie-Customer Order\Fareast Sails\2024 Orders\Need to be Confirmed\8000607 Dorian T

Initial Design Date: 15/6/2024
Boat:
Trans World 41
Client:
Fareast Sails

Comments:

Design Data
=====

Genoa

Measurements

Luff geodesic: 41.580Ft
Leech geodesic: 35.865Ft
Foot geodesic: 20.961Ft
Headboard width: 0.164Ft
Luff perpendicular (HLP): 18.300Ft
Upper width (HUW): 2.141Ft
Three-quarter width (HTW): 4.202Ft
Half width (HHW): 8.611Ft
Quarter width (HQW): 13.363Ft
Foot median: 37.873Ft
ORC Headsail area: 369.169Ft?
IRC Headsail area: 368.374Ft?
Surface area: 371.734Ft?
Forestay height: 46.000Ft
J: 15.250Ft

Draft Stripes

1, Luff: 10.432Ft ; Leech: 5.559Ft ;
2, Luff: 20.862Ft ; Leech: 15.738Ft ;
3, Luff: 31.258Ft ; Leech: 25.717Ft ;

Luff Curve

41.575Ft, 0.000Ft
38.120Ft, 0.105Ft
34.299Ft, 0.189Ft
30.936Ft, 0.233Ft
27.025Ft, 0.249Ft
20.689Ft, 0.219Ft
13.512Ft, 0.149Ft
7.027Ft, 0.074Ft
0.000Ft, 0.000Ft

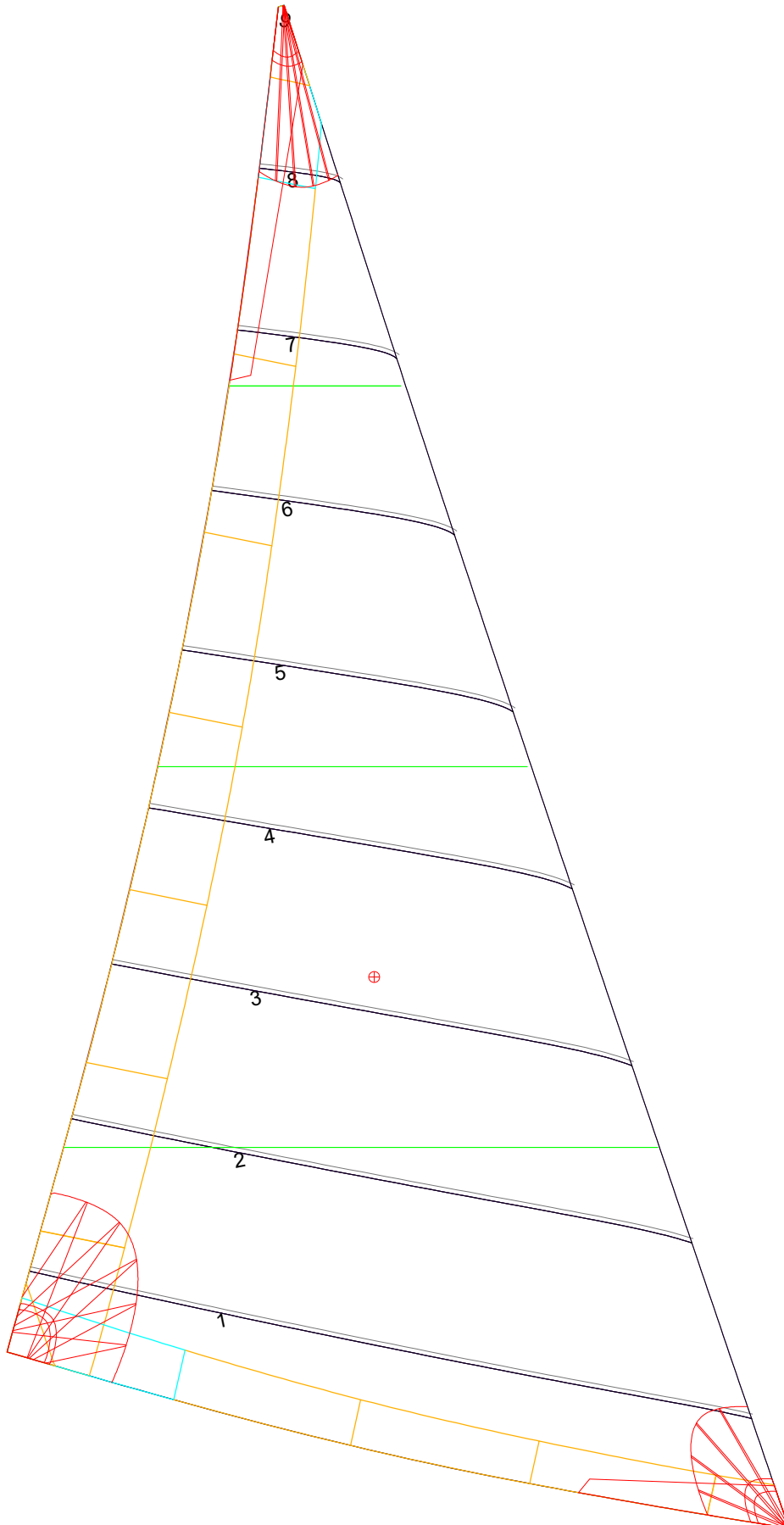
Fanned Luff (@ 5.00% [1.013Ft])

100% (41.576Ft) : 0.000Ft
90% (37.421Ft) : -0.110Ft
80% (33.262Ft) : -0.196Ft
70% (29.105Ft) : -0.242Ft
60% (24.947Ft) : -0.252Ft
50% (20.789Ft) : -0.236Ft
40% (16.631Ft) : -0.202Ft
30% (12.473Ft) : -0.159Ft
20% (8.316Ft) : -0.110Ft
10% (4.155Ft) : -0.059Ft
0% (0.000Ft) : 0.000Ft

Before BSeam

-0.000Ft
0.031Ft
0.070Ft
0.117Ft
0.165Ft
0.204Ft
0.221Ft
0.209Ft
0.175Ft
0.108Ft
0.000Ft

Genoa: 8000607 Dorian-3 Trans World 41 120% furlgen.des Fareast Sails



Seam Allowances

Zone:	Split	Radial	Cross
Zone: 1	0.115Ft	0.115Ft	0.115Ft
Cover 1	0.082Ft	0.082Ft	0.082Ft
Cover 2	0.082Ft	0.082Ft	0.082Ft
Cover 3	0.000Ft	0.000Ft	0.000Ft
Cover 4	0.000Ft	0.000Ft	0.000Ft

Edge Excesses

Sail:	Luff	Leech	Foot
Sail:	0.000Ft	0.000Ft	0.000Ft
Cover 0	0.230Ft	0.328Ft	0.230Ft
Cover 1	0.230Ft	0.230Ft	0.328Ft
Cover 2	0.000Ft	0.230Ft	0.230Ft
Cover 3	0.000Ft	0.230Ft	0.230Ft

Total Seam Lengths (Ft)

Horizontal	84.98
Radial/Vertical	0.00
Bi-Radial Split	0.00

Materials

Material	Area (Ft ²)	Panels
Material 1	372.70	1,2,3,4,5 6,7,8,9