

# Genoa: 8000603 Christian Privilege 42 catamaran Furlgen.des

Design Info  
=====

Design File:  
\\NAS\Engineering files\Queenie-Customer Order\Fareast Sails\2024 Orders\Need to be Confirmed\8000603 Christian

Initial Design Date: 11/6/2024  
Boat:  
Privilège 42  
Client:

Comments:

Design Data  
=====

## Genoa

### Measurements

Luff geodesic:	14.058m
Leech geodesic:	12.200m
Foot geodesic:	6.300m
Headboard width:	0.045m
Luff perpendicular (HLP):	5.506m
Upper width (HUW):	0.596m
Three-quarter width (HTW):	1.185m
Half width (HHW):	2.548m
Quarter width (HQW):	3.996m
Foot median:	12.962m
ORC Headsail area:	37.073m?
IRC Headsail area:	36.956m?
Surface area:	37.514m?
Forestay height:	14.650m
J:	4.130m

### Draft Stripes

1, Luff: 3.529m ; Leech: 1.852m ;  
2, Luff: 7.056m ; Leech: 5.321m ;  
3, Luff: 10.571m ; Leech: 8.730m ;

### Luff Curve

14.055m,	0.000m
12.887m,	0.048m
11.595m,	0.086m
10.458m,	0.106m
9.136m,	0.114m
6.994m,	0.100m
4.568m,	0.068m
2.376m,	0.034m
0.000m,	0.000m

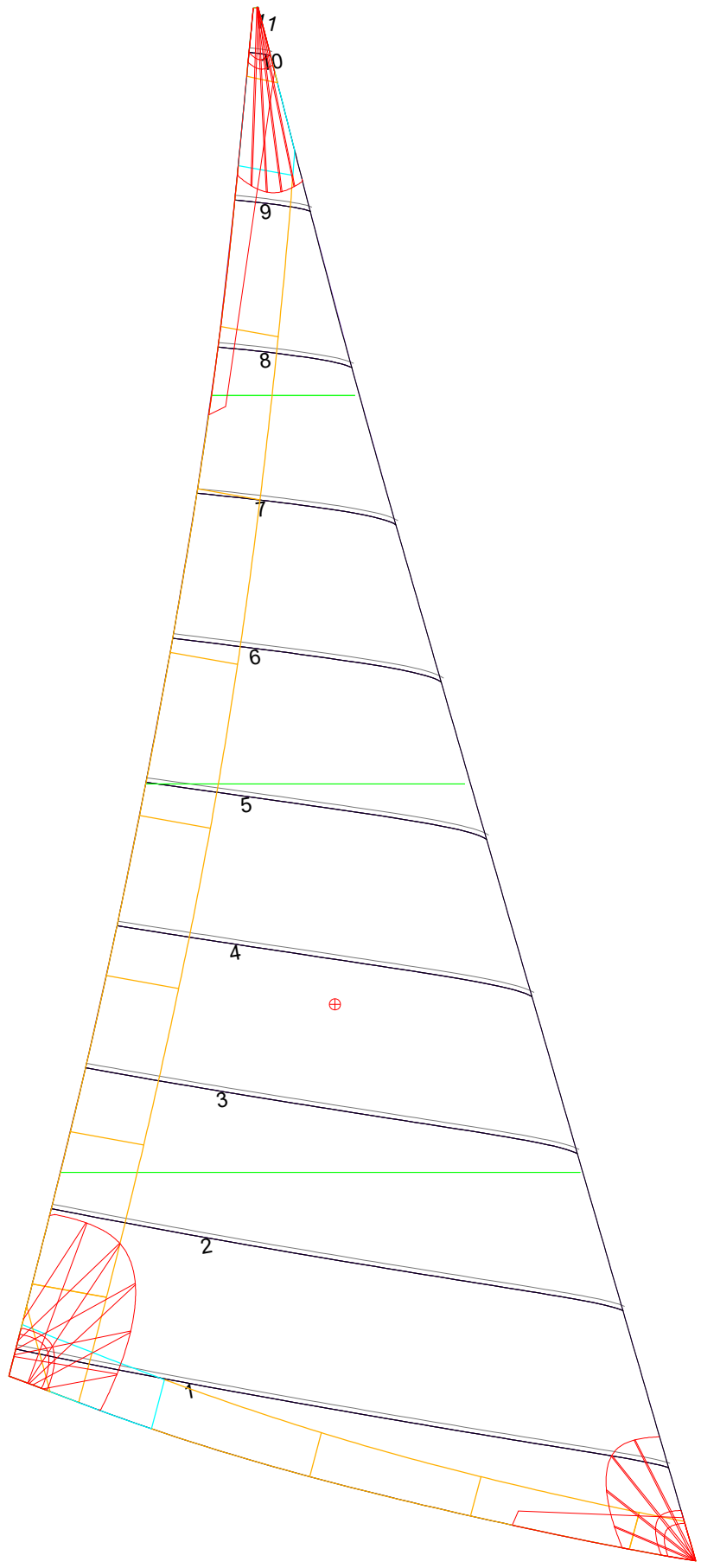
### Fanned Luff (@ 5.00% [0.299m])

100% (14.055m) :	-0.000m
90% (12.650m) :	-0.057m
80% (11.246m) :	-0.105m
70% (9.840m) :	-0.124m
60% (8.434m) :	-0.123m
50% (7.028m) :	-0.111m
40% (5.622m) :	-0.092m
30% (4.217m) :	-0.070m
20% (2.811m) :	-0.047m
10% (1.405m) :	-0.024m
0% (0.000m) :	0.000m

### Before BSeam

0.000m
-0.020m
-0.031m
-0.014m
0.016m
0.039m
0.052m
0.054m
0.045m
0.024m
0.000m

# Genoa: 8000603 Christian Privilege 42 catamaran Furlgen.des



## Seam Allowances

Zone:	Split	Radial	Cross
Zone: 1	0.040m	0.040m	0.040m
Cover 1	0.025m	0.025m	0.025m
Cover 2	0.025m	0.025m	0.025m
Cover 3	0.000m	0.000m	0.000m
Cover 4	0.000m	0.000m	0.000m

## Edge Excesses

Sail:	Luff	Leech	Foot
Sail:	0.000m	0.000m	0.000m
Cover 0	0.070m	0.100m	0.070m
Cover 1	0.070m	0.070m	0.100m
Cover 2	0.000m	0.070m	0.070m
Cover 3	0.000m	0.070m	0.070m

## Total Seam Lengths (m)

Horizontal	29.31
Radial/Vertical	0.00
Bi-Radial Split	0.00

## Materials

Material	Area (m <sup>2</sup> )	Panels
Material 1	37.62	1,2,3,4,5 6,7,8,9,10 11