

Mainsail: 8000524 Evgeny-1 FarEast 26 Fullbattmain.des

Design Info
=====

Design File:
\\NAS\Engineering files\Queenie-Customer Order\Fareast Sails\2024 Orders\Need to be Confirmed\8000524 Evgeny F

Initial Design Date: 29/5/2024
Boat:
FarEast 26
Client:

Comments:

Design Data
=====

Main

Measurements

Luff geodesic: 9.108m
Leech geodesic: 9.632m
Foot geodesic: 3.267m
Head geodesic: 0.115m
Upper width (MUW): 0.945m
Three-quarter width (MTW): 1.741m
Half width (MHW): 2.724m
Quarter width (MQW): 3.143m
Foot median: 9.328m
ORC Mainsail area: 21.192m?
Surface area: 22.506m?
Clew height: 0.100m
Mast rake: 0.000m

Battens

Position	Length	Roach	Angle	Luff	Leech	Full
83.333%	1.528m	0.768m	72.373?	7.585m	7.981m	Full
66.667%	2.356m	1.002m	72.373?	6.069m	6.385m	Full
50.000%	2.820m	0.928m	72.373?	4.553m	4.789m	Full
33.333%	3.085m	0.696m	72.373?	3.038m	3.192m	Full
16.667%	3.221m	0.376m	72.373?	1.523m	1.596m	Full

Reefing Points

1, Luff: 1.111m ; Leech: 1.116m ; Offset: 0.000m ; Number Eyelets: 3

Draft Stripes

1, Luff: 2.913m ; Leech: 2.836m ;
2, Luff: 5.918m ; Leech: 5.914m ;

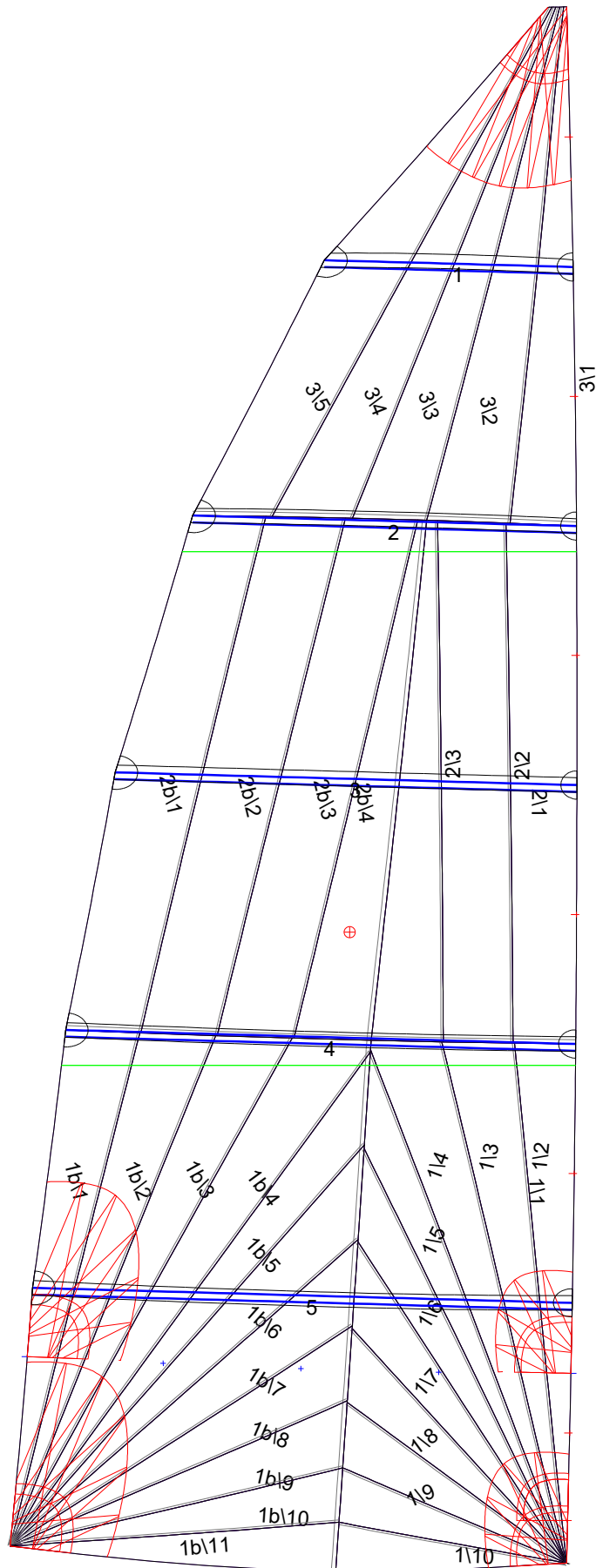
Luff Slides

1, Position: 0.762m
2, Position: 2.281m
3, Position: 3.796m
4, Position: 5.312m
5, Position: 6.828m
6, Position: 8.347m

Luff Curve

		Fanned Luff (@ 5.00% [0.163m])	Before BSeam
9.107m,	0.000m	100% (9.108m) :	0.000m
7.973m,	-0.029m	90% (8.198m) :	0.018m
6.831m,	-0.050m	80% (7.286m) :	0.032m
5.686m,	-0.059m	70% (6.376m) :	0.040m
4.554m,	-0.060m	60% (5.465m) :	0.044m
3.394m,	-0.056m	50% (4.554m) :	0.043m
2.277m,	-0.044m	40% (3.643m) :	0.041m
1.135m,	-0.025m	30% (2.732m) :	0.035m
0.000m,	0.000m	20% (1.821m) :	0.026m
		10% (0.911m) :	0.013m
		0% (0.000m) :	0.000m

Mainsail: 8000524 Evgeny-1 FarEast 26 Fullbattmain.des



Seam Allowances

Zone:	Split	Radial	Cross
Zone: 1/a	0.025m	0.013m	0.025m
Zone: 1/b	0.025m	0.013m	0.025m
Zone: 2/a	0.025m	0.013m	0.025m
Zone: 2/b	0.025m	0.013m	0.025m
Zone: 3	0.025m	0.013m	0.025m

Edge Excesses

Sail:	Luff	Leech	Foot
	0.000m	0.000m	0.000m

Total Seam Lengths (m)

Horizontal	5.44
Radial/Vertical	77.09
Bi-Radial Split	6.38

Materials

Material	Area (m ²)	Panels
Material 1	22.52	1\1,1\2,1\3,1\4,1\5 1\6,1\7,1\8,1\9,1\10 1b\1,1b\2,1b\3,1b\4,1b\5 1b\6,1b\7,1b\8,1b\9,1b\10 1b\11,2\1,2\2,2\3,2b\4 2b\3,2b\2,2b\1,3\1,3\2 3\3,3\4,3\5