

Genoa: 8000504 Pedro-2 Beneteau 58 furlgen.des

Design Info

=====

Design File:

\\NAS\Engineering files\Queenie-Customer Order\Fareast Sails\2024 Orders\Need to be Confirmed\8000504 Pedro Be

Initial Design Date: 24/5/2024

Boat:

Beneteau 58

Client:

Comments:

Design Data

=====

Genoa

Measurements

Luff geodesic:	22.819m
Leech geodesic:	21.906m
Foot geodesic:	9.712m
Headboard width:	0.065m
Luff perpendicular (HLP):	9.288m
Upper width (HUW):	0.992m
Three-quarter width (HTW):	1.990m
Half width (HHW):	4.306m
Quarter width (HQW):	6.747m
Foot median:	22.065m
ORC Headsail area:	101.499m ²
IRC Headsail area:	101.181m ²
Surface area:	101.603m ²
Forestay height:	23.880m
J:	6.880m

Draft Stripes

1, Luff: 2.291m ; Leech: 1.859m ;
2, Luff: 5.728m ; Leech: 5.241m ;
3, Luff: 11.455m ; Leech: 10.804m ;
4, Luff: 17.160m ; Leech: 16.307m ;

Luff Curve

22.815m,	0.000m
20.919m,	0.077m
18.822m,	0.140m
16.976m,	0.172m
14.830m,	0.184m
11.353m,	0.162m
7.415m,	0.110m
3.856m,	0.055m
0.000m,	0.000m

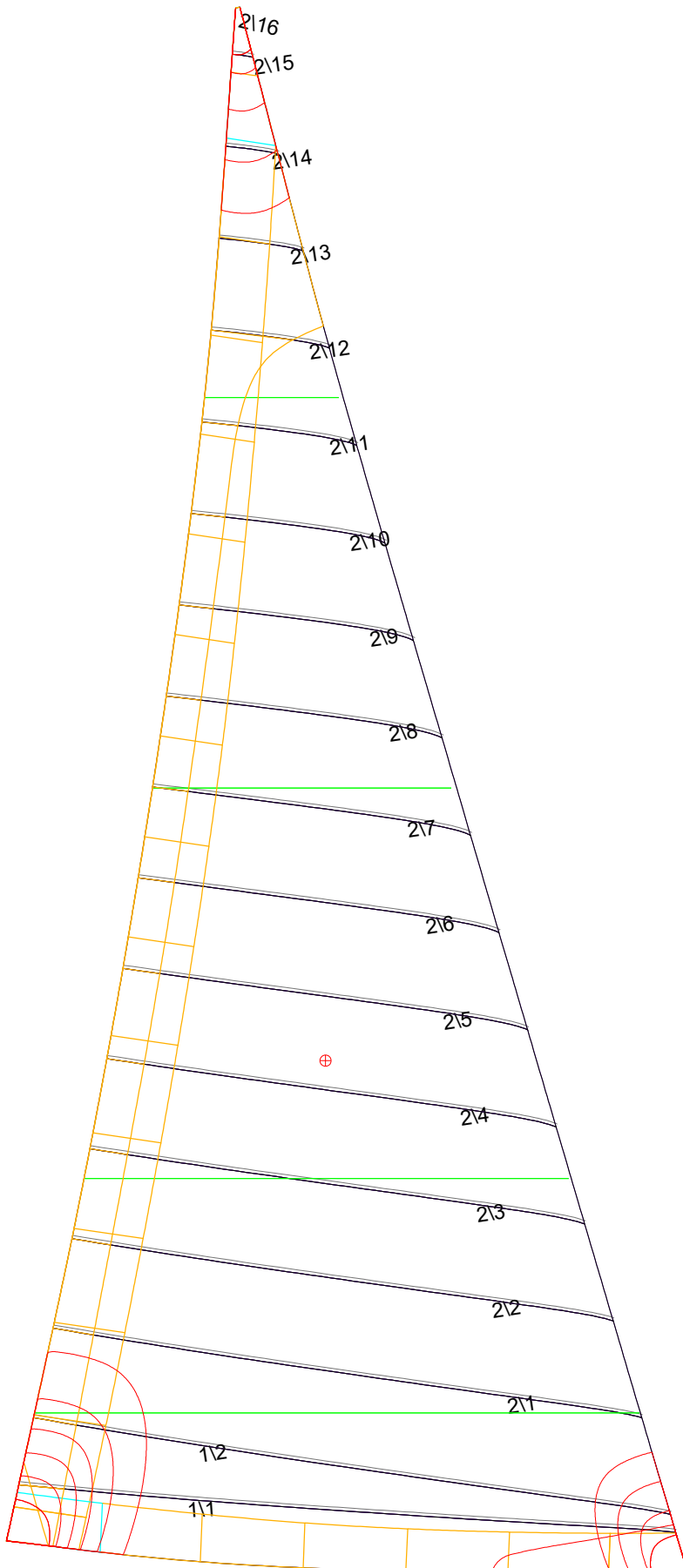
Fanned Luff (@ 5.00% [0.477m])

100% (22.815m) :	0.000m
90% (20.531m) :	-0.087m
80% (18.255m) :	-0.159m
70% (15.971m) :	-0.187m
60% (13.690m) :	-0.183m
50% (11.408m) :	-0.164m
40% (9.127m) :	-0.136m
30% (6.845m) :	-0.103m
20% (4.564m) :	-0.069m
10% (2.280m) :	-0.035m
0% (0.000m) :	0.000m

Before BSeam

0.000m
-0.036m
-0.057m
-0.034m
0.010m
0.045m
0.065m
0.069m
0.059m
0.033m
0.000m

Genoa: 8000504 Pedro-2 Beneteau 58 furlgen.des



Seam Allowances

	Split	Radial	Cross
Zone: 1	0.000m	0.000m	0.045m
Zone: 2	0.000m	0.000m	0.045m
Cover 1	0.025m	0.025m	0.025m
Cover 2	0.025m	0.025m	0.025m
Cover 3	0.000m	0.000m	0.000m
Cover 4	0.000m	0.000m	0.000m
Cover 5	0.045m	0.045m	0.045m

Edge Excesses

	Luff	Leech	Foot
Sail:	0.000m	0.000m	0.000m
Cover 0	0.080m	0.120m	0.080m
Cover 1	0.080m	0.080m	0.120m
Cover 2	0.000m	0.070m	0.070m
Cover 3	0.000m	0.070m	0.070m
Cover 4	0.000m	0.000m	0.000m

Total Seam Lengths (m)

Horizontal	82.32
Radial/Vertical	0.00
Bi-Radial Split	0.00

Materials

Material	Area (m ²)	Panels
Material 1	101.84	111, 112, 211, 212, 213, 214, 215, 216, 217, 218, 219, 2110, 2111, 2112, 2113, 2114, 2115, 2116