

Mainsail: 8000429 Yngve Bavaria 40 fullbattmainV1.des

Design Info
=====

Design File:
\\NAS\Engineering files\Queenie-Customer Order\Fareast Sails\2024 Orders\Need to be Confirmed\8000429 Yngve Bavaria

Initial Design Date: 22/5/2024
Boat:
Bavaria 40
Client:

Comments:

Design Data
=====

Main

Measurements

Luff geodesic: 13.909m
Leech geodesic: 14.686m
Foot geodesic: 4.935m
Head geodesic: 0.135m
Upper width (MUW): 0.971m
Three-quarter width (MTW): 1.772m
Half width (MHW): 3.085m
Quarter width (MQW): 4.108m
Foot median: 14.240m
ORC Mainsail area: 40.019m?
Surface area: 41.085m?
Clew height: 0.100m
Mast rake: 0.000m

Battens

| Position | Length | Roach | Angle | Luff | Leech | Full |
|----------|--------|--------|---------|---------|---------|------|
| 82.000% | 1.429m | 0.333m | 72.356? | 11.399m | 11.997m | Full |
| 62.000% | 2.571m | 0.433m | 72.356? | 8.618m | 9.071m | Full |
| 42.000% | 3.493m | 0.381m | 72.356? | 5.838m | 6.145m | Full |
| 22.000% | 4.233m | 0.220m | 72.356? | 3.057m | 3.219m | Full |

Reefing Points

1, Luff: 1.696m ; Leech: 1.759m ; Offset: 0.000m ; Number Eyelets: 3
2, Luff: 3.546m ; Leech: 3.670m ; Offset: 0.000m ; Number Eyelets: 3

Draft Stripes

1, Luff: 3.407m ; Leech: 3.415m ;
2, Luff: 6.953m ; Leech: 7.126m ;
3, Luff: 10.430m ; Leech: 10.809m ;

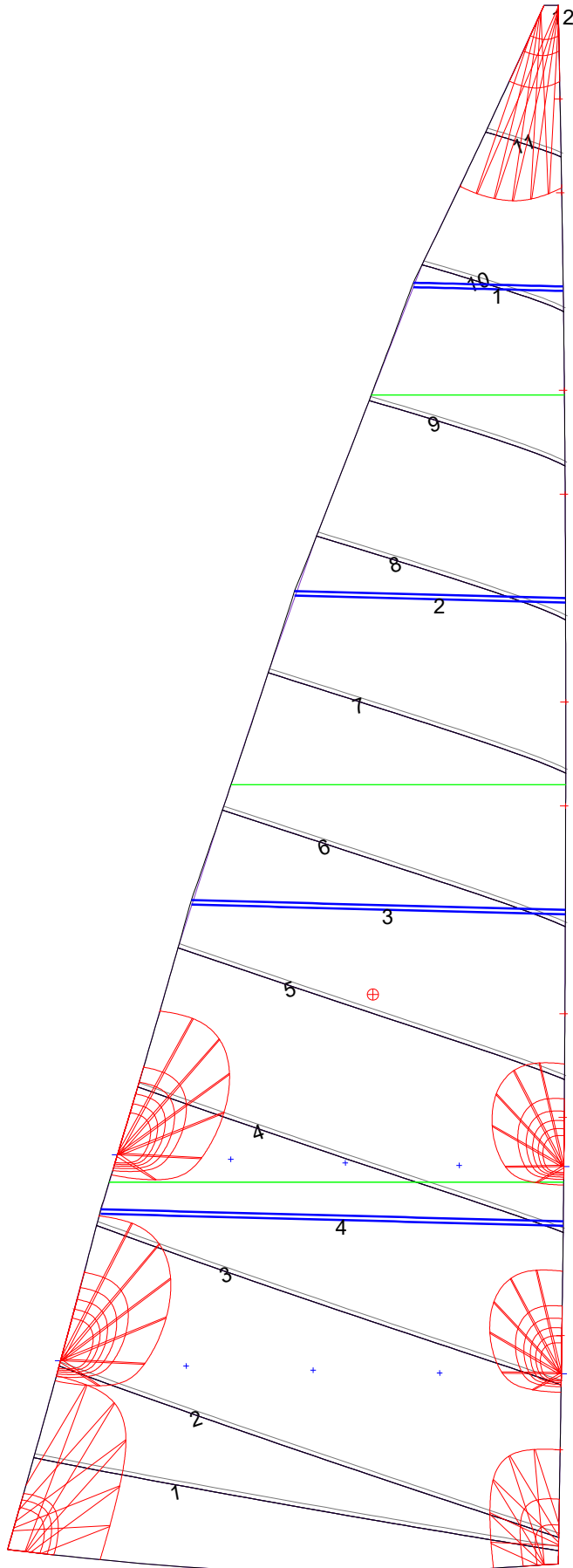
Luff Slides

1, Position: 1.019m
2, Position: 2.038m
3, Position: 3.984m
4, Position: 4.911m
5, Position: 6.764m
6, Position: 7.691m
7, Position: 9.545m
8, Position: 10.472m
9, Position: 12.236m
10, Position: 13.072m

Luff Curve

| | | Fanned Luff (@ 5.00% [0.246m]) | Before BSeam |
|----------|---------|--------------------------------|--------------|
| 13.909m, | 0.000m | 100% (13.909m) : | 0.000m |
| 12.175m, | -0.032m | 90% (12.518m) : | 0.051m |
| 10.431m, | -0.055m | 80% (11.127m) : | 0.101m |
| 8.683m, | -0.065m | 70% (9.736m) : | 0.138m |
| 6.954m, | -0.066m | 60% (8.345m) : | 0.157m |
| 5.182m, | -0.061m | 50% (6.955m) : | 0.159m |
| 3.477m, | -0.049m | 40% (5.564m) : | 0.150m |
| 1.733m, | -0.028m | 30% (4.173m) : | 0.126m |
| 0.000m, | 0.000m | 20% (2.782m) : | 0.090m |
| | | 10% (1.391m) : | 0.044m |
| | | 0% (0.000m) : | 0.000m |

Mainsail: 8000429 Yngve Bavaria 40 fullbattmainV1.des



| Seam Allowances | | | |
|-----------------|--------|--------|--------|
| Zone: | Split | Radial | Cross |
| 1 | 0.038m | 0.038m | 0.038m |

| Edge Excesses | | | |
|---------------|--------|--------|--------|
| Sail: | Luff | Leech | Foot |
| | 0.000m | 0.000m | 0.000m |

Total Seam Lengths (m)

| | |
|-----------------|-------|
| Horizontal | 34.81 |
| Radial/Vertical | 0.00 |
| Bi-Radial Split | 0.00 |

Materials

| Material | Area (m ²) | Panels |
|------------|------------------------|----------------------------------|
| Material 1 | 41.12 | 1,2,3,4,5 6,7,8,9,10 11,12 |