

Mainsail: 8000426 Slavcho-1 H22 mainsailV1.des

Design Info
=====

Design File:
\\NAS\Engineering files\Queenie-Customer Order\Fareast Sails\2024 Orders\Need to be Confirmed\8000426 Slavcho

Initial Design Date: 7/5/2024
Boat:
H22
Client:

Comments:

Design Data
=====

Main

Measurements

Luff geodesic:	8.811m
Leech geodesic:	9.400m
Foot geodesic:	3.385m
Head geodesic:	0.115m
Upper width (MUW):	0.798m
Three-quarter width (MTW):	1.480m
Half width (MHW):	2.401m
Quarter width (MQW):	3.000m
Foot median:	9.055m
ORC Mainsail area:	19.010m?
Surface area:	19.885m?
Clew height:	0.100m
Mast rake:	0.000m

Battens

Position	Length	Roach	Angle	Luff	Leech	Full
80.000%	1.390m	0.517m	70.999?	7.044m	7.481m	Full
60.000%	1.050m	0.612m	70.999?	5.282m	5.611m	
40.000%	1.050m	0.504m	70.999?	3.521m	3.741m	
20.000%	0.950m	0.285m	70.999?	1.760m	1.870m	

Reefing Points

1, Luff: 1.163m ; Leech: 1.186m ; Offset: 0.000m ; Number Eyelets: 3

Draft Stripes

1, Luff: 2.907m ; Leech: 2.896m ;
2, Luff: 5.814m ; Leech: 5.940m ;

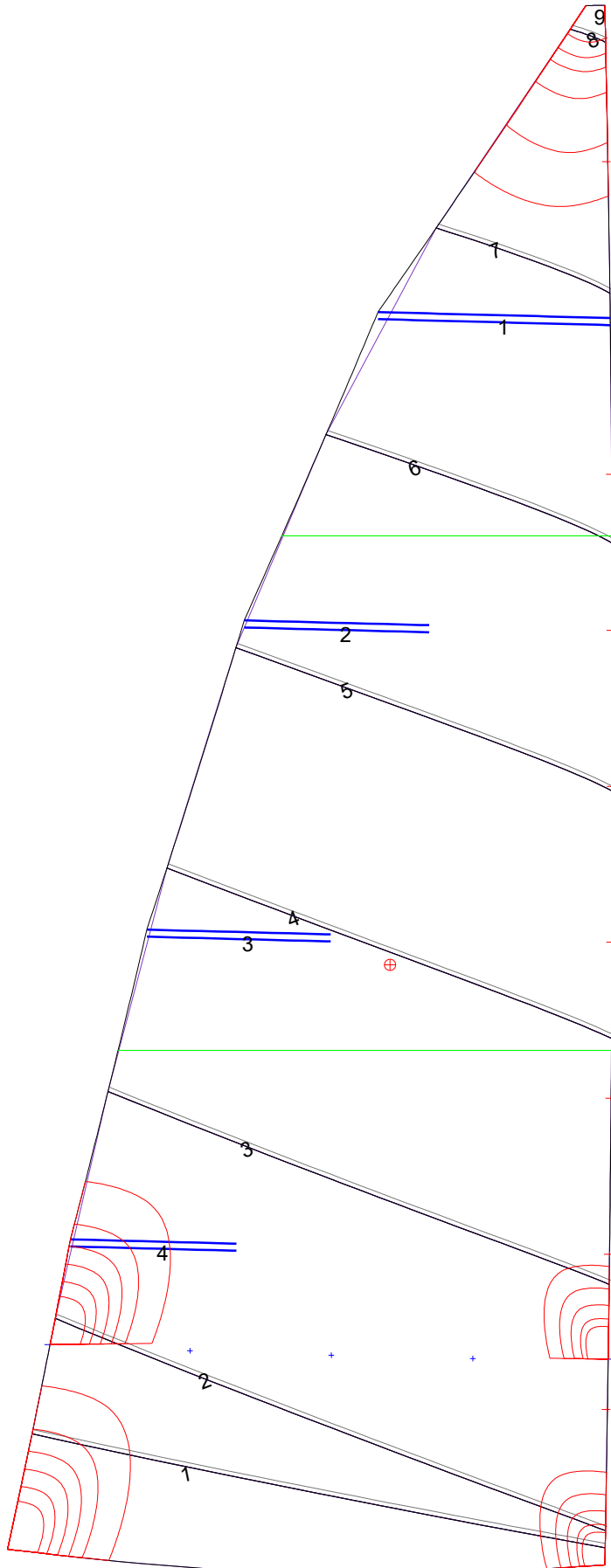
Luff Slides

1, Position: 0.878m
2, Position: 1.756m
3, Position: 2.637m
4, Position: 3.518m
5, Position: 4.399m
6, Position: 5.280m
7, Position: 6.161m
8, Position: 7.927m

Luff Curve

		Fanned Luff (@ 5.00% [0.169m])	Before BSeam
8.811m,	0.000m	100% (8.811m) :	0.000m
7.713m,	-0.020m	90% (7.930m) :	0.042m
6.608m,	-0.035m	80% (7.049m) :	0.079m
5.501m,	-0.041m	70% (6.168m) :	0.101m
4.405m,	-0.042m	60% (5.287m) :	0.113m
3.283m,	-0.039m	50% (4.406m) :	0.113m
2.203m,	-0.031m	40% (3.524m) :	0.107m
1.098m,	-0.018m	30% (2.643m) :	0.090m
0.000m,	0.000m	20% (1.762m) :	0.063m
		10% (0.881m) :	0.030m
		0% (0.000m) :	0.000m

Mainsail: 8000426 Slavcho-1 H22 mainsailV1.des



Seam Allowances			
Zone: 1	Split	Radial	Cross
	0.000m	0.000m	0.025m

Edge Excesses			
Sail:	Luff	Leech	Foot
	0.000m	0.000m	0.000m

Total Seam Lengths (m)

Horizontal	18.09
Radial/Vertical	0.00
Bi-Radial Split	0.00

Materials

Material	Area (m ²)	Panels
Material 1	19.83	1,2,3,4,5 6,7,8,9