

# Genoa: 8000421 Peter Bavaria 42 furlgen.des

## Design Info

=====

## Design File:

\\NAS\Engineering files\Queenie-Customer Order\Fareast Sails\2024 Orders\Need to be Confirmed\8000421 Peter Bavaria

Initial Design Date: 20/4/2024

Boat:

Bavaria 42

Client:

Comments:

## Design Data

=====

### Genoa

#### Measurements

Luff geodesic:	14.592m
Leech geodesic:	13.540m
Foot geodesic:	5.820m
Headboard width:	0.040m
Luff perpendicular (HLP):	5.426m
Upper width (HUW):	0.599m
Three-quarter width (HTW):	1.188m
Half width (HHW):	2.482m
Quarter width (HQW):	3.905m
Foot median:	13.928m
ORC Headsail area:	37.788m <sup>2</sup>
IRC Headsail area:	37.724m <sup>2</sup>
Surface area:	37.898m <sup>2</sup>
Forestay height:	14.950m
J:	4.680m

#### Draft Stripes

1, Luff: 3.666m ; Leech: 3.102m ;  
2, Luff: 7.330m ; Leech: 6.579m ;  
3, Luff: 10.979m ; Leech: 10.030m ;

#### Luff Curve

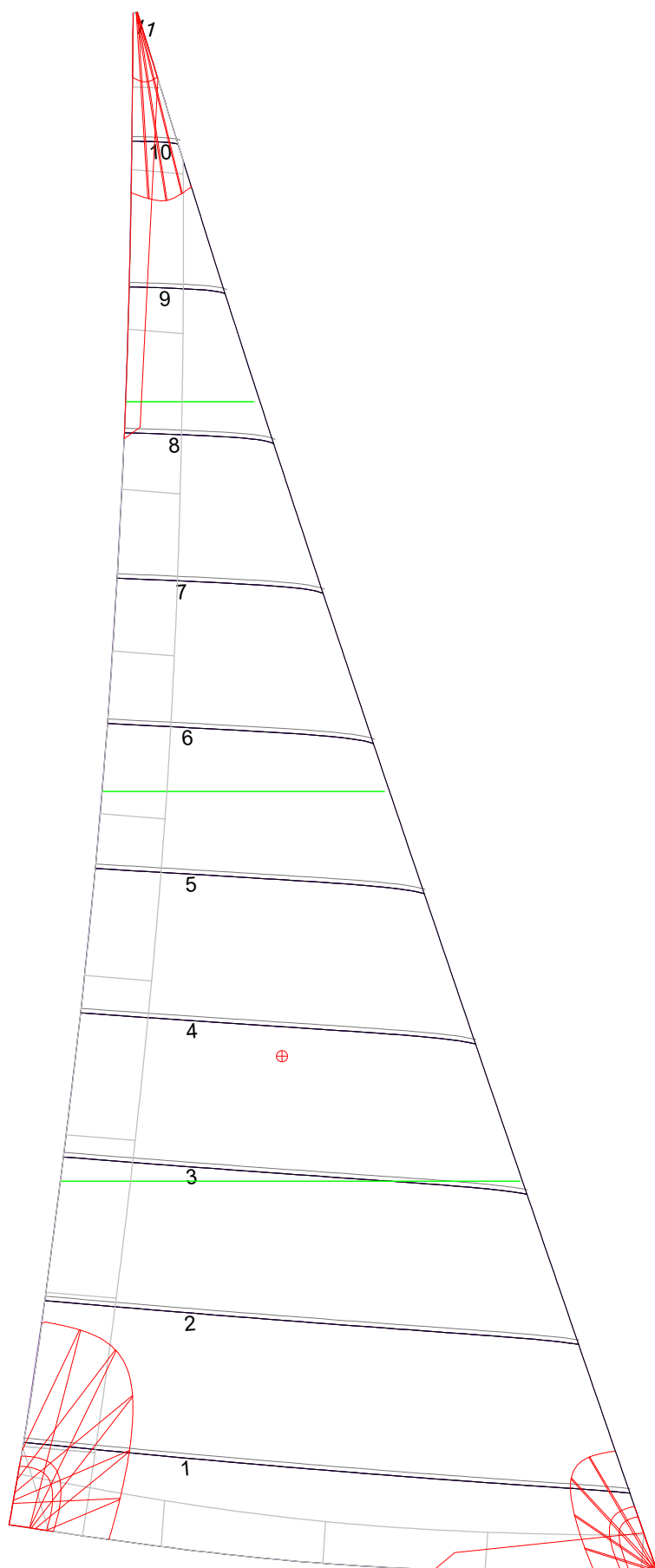
14.589m,	0.000m
13.377m,	0.049m
12.036m,	0.089m
10.856m,	0.110m
9.483m,	0.118m
7.260m,	0.103m
4.741m,	0.070m
2.466m,	0.035m
0.000m,	0.000m

#### Fanned Luff (@ 5.00% [0.288m])

100% (14.590m) :	-0.000m	-0.000m
90% (13.130m) :	-0.052m	-0.014m
80% (11.674m) :	-0.091m	-0.018m
70% (10.213m) :	-0.110m	-0.012m
60% (8.754m) :	-0.114m	0.001m
50% (7.295m) :	-0.105m	0.014m
40% (5.836m) :	-0.089m	0.025m
30% (4.377m) :	-0.069m	0.029m
20% (2.919m) :	-0.047m	0.028m
10% (1.458m) :	-0.025m	0.020m
0% (0.000m) :	0.000m	0.000m

#### Before BSeam

# Genoa: 8000421 Peter Bavaria 42 furlgen.des



Seam Allowances			
	Split	Radial	Cross
Zone: 1	0.040m	0.040m	0.040m
Cover 1	0.025m	0.025m	0.025m
Cover 2	0.025m	0.025m	0.025m
Cover 3	0.000m	0.000m	0.000m
Cover 4	0.000m	0.000m	0.000m

Edge Excesses			
	Luff	Leech	Foot
Sail:	0.000m	0.000m	0.000m
Cover 0	0.070m	0.100m	0.070m
Cover 1	0.070m	0.070m	0.100m
Cover 2	0.000m	0.070m	0.070m
Cover 3	0.000m	0.070m	0.070m

### Total Seam Lengths (m)

Horizontal	28.53
Radial/Vertical	0.00
Bi-Radial Split	0.00

### Materials

Material	Area (m <sup>2</sup> )	Panels
Material 1	37.99	1,2,3,4,5 6,7,8,9,10 11