

Mainsail: 8000404 Bruce Whiting 32 fullbattmainV1.des

Design Info
=====

Initial Design Date: 2/5/2024
Boat:
Whiting 32
Client:

Design File:
\\NAS\Engineering files\Queenie-Customer Order\Fareast Sails\2024 Orders\Need to be Confirmed\8000404 Bruce Whiting

Comments:

Design Data
=====

Main

Measurements

Luff geodesic:	10.593m
Leech geodesic:	10.890m
Foot geodesic:	3.960m
Head geodesic:	0.115m
Upper width (MUW):	0.764m
Three-quarter width (MTW):	1.395m
Half width (MHW):	2.447m
Quarter width (MQW):	3.273m
Foot median:	10.685m
ORC Mainsail area:	24.248m?
Surface area:	24.838m?
Clew height:	0.483m
Mast rake:	0.000m

Battens

Position	Length	Roach	Angle	Luff	Leech	Full
82.000%	1.125m	0.241m	76.408?	8.669m	8.890m	Full
62.000%	2.055m	0.346m	76.408?	6.552m	6.722m	Full
42.000%	2.781m	0.291m	76.408?	4.436m	4.553m	Full
22.000%	3.389m	0.169m	76.408?	2.323m	2.385m	Full

Reefing Points

1, Luff: 1.396m ; Leech: 1.417m ; Offset: 0.000m ; Number Eyelets: 0
2, Luff: 2.803m ; Leech: 2.842m ; Offset: 0.000m ; Number Eyelets: 0
3, Luff: 4.708m ; Leech: 4.771m ; Offset: 0.000m ; Number Eyelets: 0

Draft Stripes

1, Luff: 3.490m ; Leech: 3.160m ;
2, Luff: 6.985m ; Leech: 6.854m ;

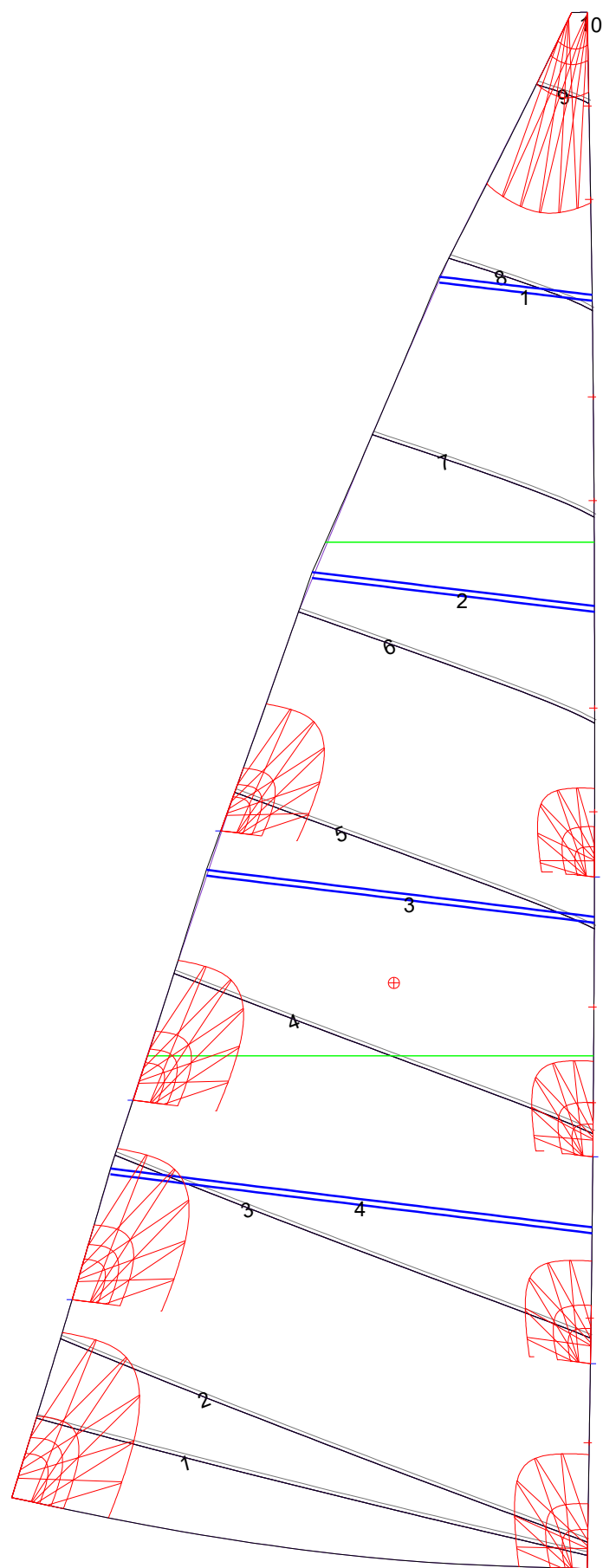
Luff Slides

1, Position: 0.857m
2, Position: 1.705m
3, Position: 3.172m
4, Position: 3.822m
5, Position: 5.152m
6, Position: 5.857m
7, Position: 7.269m
8, Position: 7.975m
9, Position: 9.319m
10, Position: 9.956m

Luff Curve

		Fanned Luff (@ 5.00% [0.196m])	Before BSeam
10.593m,	0.000m	100% (10.593m) :	0.000m
9.273m,	-0.024m	90% (9.534m) :	0.015m
7.944m,	-0.042m	80% (8.474m) :	0.027m
6.613m,	-0.049m	70% (7.415m) :	0.034m
5.296m,	-0.050m	60% (6.356m) :	0.036m
3.947m,	-0.047m	50% (5.297m) :	0.035m
2.648m,	-0.037m	40% (4.237m) :	0.033m
1.320m,	-0.021m	30% (3.178m) :	0.027m
0.000m,	0.000m	20% (2.118m) :	0.019m
		10% (1.060m) :	0.009m
		0% (0.000m) :	0.000m

Mainsail: 8000404 Bruce Whiting 32 fullbattmainV1.des



Seam Allowances			
	Split	Radial	Cross
Zone: 1	0.025m	0.025m	0.025m

Edge Excesses			
Sail:	Luff	Leech	Foot
	0.000m	0.000m	0.000m

Total Seam Lengths (m)

Horizontal	22.68
Radial/Vertical	0.00
Bi-Radial Split	0.00

Materials

Material	Area (m²)	Panels
Material 1	24.85	1,2,3,4,5 6,7,8,9,10