

Mainsail: 8000332 Stefan-1 Mizzen.des

Design Info
=====

Design File:
\\NAS\Engineering files\Queenie-Customer Order\Fareast Sails\2024 Orders\Need to be Confirmed\8000332 Stefan m

Initial Design Date: 5/4/2024
Boat:

Comments:

Client:

Design Data
=====

Main

Measurements

Luff geodesic:	8.415m
Leech geodesic:	8.667m
Foot geodesic:	2.247m
Head geodesic:	0.115m
Upper width (MUW):	0.491m
Three-quarter width (MTW):	0.856m
Half width (MHW):	1.440m
Quarter width (MQW):	1.899m
Foot median:	8.536m
ORC Mainsail area:	11.313m?
Surface area:	11.552m?
Clew height:	0.100m
Mast rake:	0.000m

Battens

Position	Length	Roach	Angle	Luff	Leech	Full
80.000%	0.472m	0.154m	77.201?	6.727m	6.921m	
60.000%	0.674m	0.201m	77.201?	5.045m	5.191m	
40.000%	0.674m	0.177m	77.201?	3.363m	3.460m	
20.000%	0.562m	0.102m	77.201?	1.682m	1.730m	

Reefing Points

1, Luff: 1.262m ; Leech: 1.282m ; Offset: 0.000m ; Number Eyelets: 2

Draft Stripes

1, Luff: 4.207m ; Leech: 4.244m ;

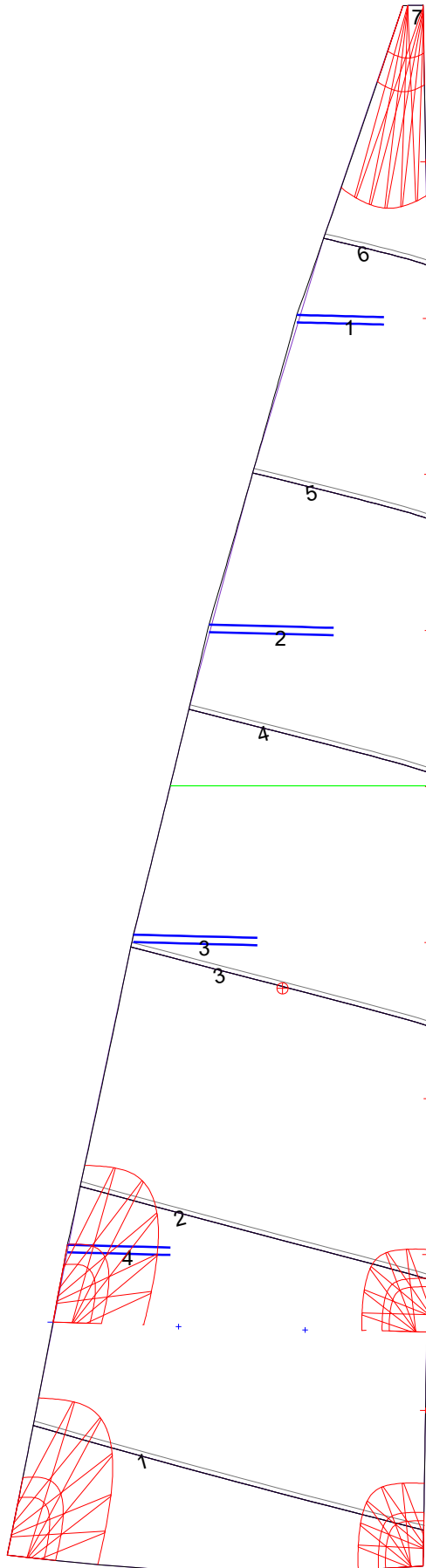
Luff Slides

- 1, Position: 0.839m
- 2, Position: 1.679m
- 3, Position: 2.520m
- 4, Position: 3.361m
- 5, Position: 4.202m
- 6, Position: 5.043m
- 7, Position: 5.885m
- 8, Position: 6.726m
- 9, Position: 7.571m

Luff Curve

		Fanned Luff (@ 5.00% [0.112m])	Before BSeam
8.415m,	0.000m	100% (8.415m) :	0.000m
7.366m,	-0.019m	90% (7.574m) :	0.012m
6.311m,	-0.033m	80% (6.732m) :	0.022m
5.253m,	-0.039m	70% (5.891m) :	0.028m
4.207m,	-0.040m	60% (5.049m) :	0.030m
3.135m,	-0.037m	50% (4.208m) :	0.030m
2.104m,	-0.030m	40% (3.366m) :	0.028m
1.049m,	-0.017m	30% (2.524m) :	0.024m
0.000m,	0.000m	20% (1.683m) :	0.018m
		10% (0.842m) :	0.009m
		0% (0.000m) :	0.000m

Mainsail: 8000332 Stefan-1 Mizzen.des



Seam Allowances			
Zone: 1	Split	Radial	Cross
	0.025m	0.025m	0.025m

Edge Excesses			
Sail:	Luff	Leech	Foot
	0.000m	0.000m	0.000m

Total Seam Lengths (m)

Horizontal	8.94
Radial/Vertical	0.00
Bi-Radial Split	0.00

Materials

Material	Area (m ²)	Panels
Material 1	11.53	1,2,3,4,5 6,7