

Spinnaker: 8000324 Yves sym spin.des

Design Info
=====

Design File:
\\NAS\Engineering files\Queenie-Customer Order\Fareast Sails\2024 Orders\Need to be Confirmed\8000324 Yves spin

Initial Design Date: 22/3/2024
Boat:

Comments:

Client:

Design Data
=====

Spinnaker

Measurements

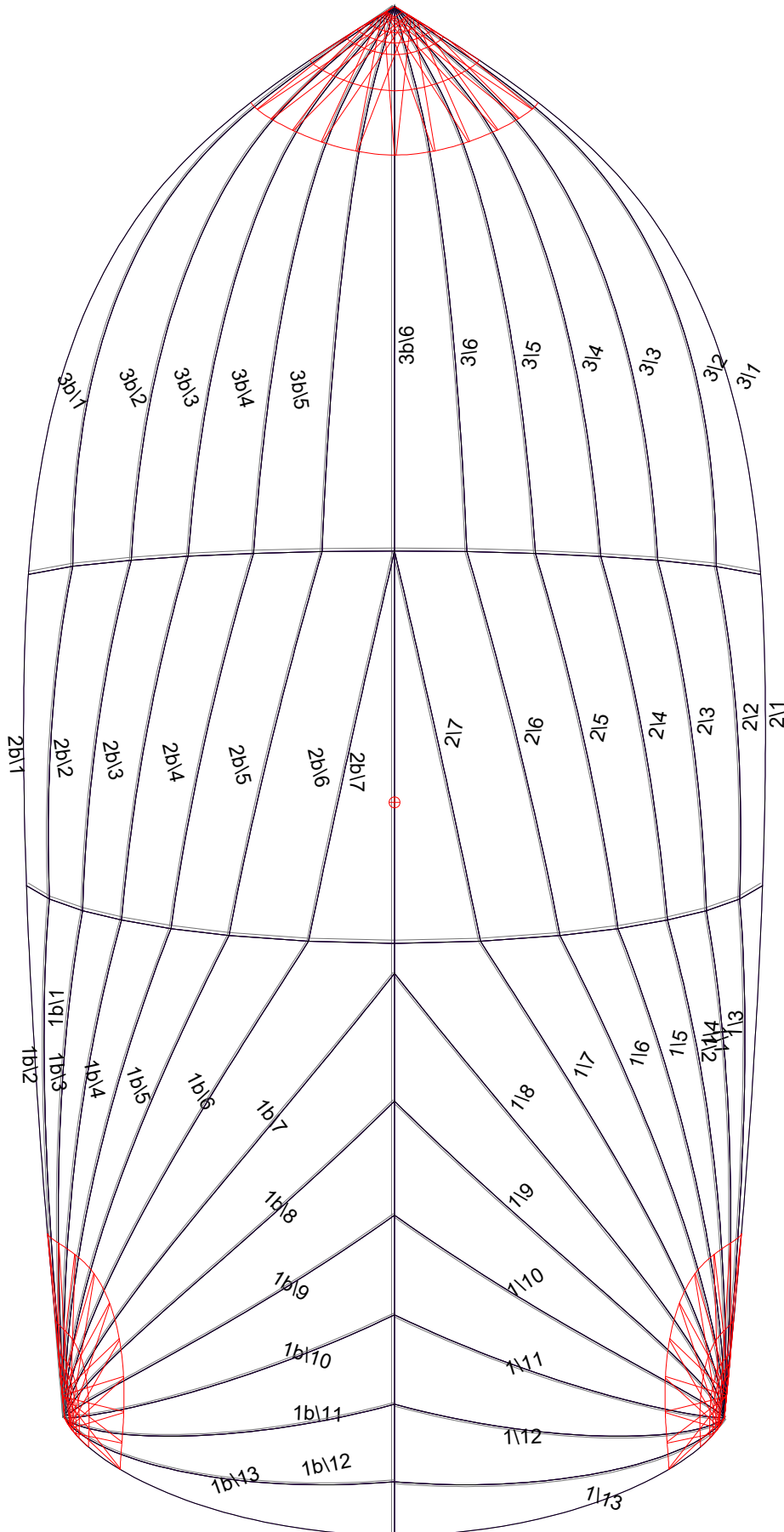
Leech length (SLE): 13.650m
Foot length (SFL): 6.876m
Headboard Width: 0.015m
Maximum width (36.9%): 7.351m
Three-quarter width: 4.900m
Half width (SHW): 7.223m
Quarter width: 7.305m
Foot median: 14.654m
ORC Spinnaker Area: 81.368m?
IRC Spinnaker Area: 81.043m?
Surface Area: 86.079m?
Hoist height: 13.650m
Pole Length: 3.820m

Luff Curve

15.500m, 0.000m
11.625m, 0.000m
7.750m, 0.000m
3.875m, 0.000m
0.000m, 0.000m

Fanned Luff (@ 5.00% [0.269m])		Before BSeam
100% (13.347m) :	-0.000m	0.000m
77% (10.235m) :	-1.885m	2.231m
56% (7.510m) :	-2.998m	2.823m
37% (4.951m) :	-3.287m	2.905m
21% (2.775m) :	-1.966m	2.735m
28% (3.720m) :	-1.471m	2.417m
28% (3.682m) :	-0.460m	2.019m
25% (3.367m) :	0.708m	1.563m
17% (2.204m) :	0.783m	1.066m
9% (1.152m) :	0.407m	0.542m
0% (0.000m) :	0.000m	0.000m

Spinnaker: 8000324 Yves sym spin.des



Seam Allowances

Zone:	Split	Radial	Cross
Zone: 1/a	0.025m	0.015m	0.025m
Zone: 1/b	0.025m	0.015m	0.025m
Zone: 2/a	0.025m	0.015m	0.025m
Zone: 2/b	0.025m	0.015m	0.025m
Zone: 3/a	0.025m	0.015m	0.025m
Zone: 3/b	0.025m	0.015m	0.025m

Edge Excesses

Sail:	Luff	Leech	Foot
Sail:	0.000m	0.000m	0.000m

Total Seam Lengths (m)

Horizontal	14.48
Radial/Vertical	215.09
Bi-Radial Split	14.79

Materials

Material	Area (m²)	Panels
Material 1	85.99	1\1, 1\2, 1\3, 1\4, 1\5 1\6, 1\7, 1\8, 1\9, 1\10 1\11, 1\12, 1\13, 1b\1, 1b\2 1b\3, 1b\4, 1b\5, 1b\6, 1b\7 1b\8, 1b\9, 1b\10, 1b\11, 1b\12 1b\13, 2\1, 2\2, 2\3, 2\4 2\5, 2\6, 2\7, 2b\7, 2b\6 2b\5, 2b\4, 2b\3, 2b\2, 2b\1 3\1, 3\2, 3\3, 3\4, 3\5 3\6, 3b\6, 3b\5, 3b\4, 3b\3 3b\2, 3b\1