

Mainsail: 8000312 Doyel-1 fullbattmain.des

Design Info
=====

Design File:
\\NAS\Engineering files\Queenie-Customer Order\Fareast Sails\2024 Orders\Need to be Confirmed\8000312 Doyel ma

Initial Design Date: 20/9/2024
Boat:

Comments:

Client:

Design Data
=====

Main

Measurements

Luff geodesic:	14.786m
Leech geodesic:	15.103m
Foot geodesic:	5.078m
Head geodesic:	0.135m
Upper width (MUW):	0.931m
Three-quarter width (MTW):	1.716m
Half width (MHW):	3.096m
Quarter width (MQW):	4.205m
Foot median:	14.782m
ORC Mainsail area:	42.971m ²
Surface area:	43.473m ²
Clew height:	0.598m
Mast rake:	0.000m

Battens

Position	Length	Roach	Angle	Luff	Leech	Full
80.000%	1.466m	0.348m	77.305?	11.823m	12.040m	Full
60.000%	2.650m	0.453m	77.305?	8.863m	9.030m	Full
40.000%	3.629m	0.399m	77.305?	5.906m	6.020m	Full
20.000%	4.427m	0.230m	77.305?	2.952m	3.010m	Full

Reefing Points

- 1, Luff: 1.981m ; Leech: 2.004m ; Offset: 0.000m ; Number Eyelets: 3
- 2, Luff: 4.164m ; Leech: 4.208m ; Offset: 0.000m ; Number Eyelets: 3

Draft Stripes

- 1, Luff: 4.872m ; Leech: 4.459m ;
- 2, Luff: 9.751m ; Leech: 9.596m ;

Luff Slides

- 1, Position: 0.818m
- 2, Position: 1.759m
- 3, Position: 3.937m
- 4, Position: 4.921m
- 5, Position: 6.892m
- 6, Position: 7.877m
- 7, Position: 9.850m
- 8, Position: 10.836m
- 9, Position: 12.810m
- 10, Position: 13.798m

Foot Slides

- 1, Position: 0.500m
- 2, Position: 1.083m
- 3, Position: 1.665m
- 4, Position: 2.248m
- 5, Position: 2.830m
- 6, Position: 3.413m
- 7, Position: 3.995m
- 8, Position: 4.578m

Luff Curve

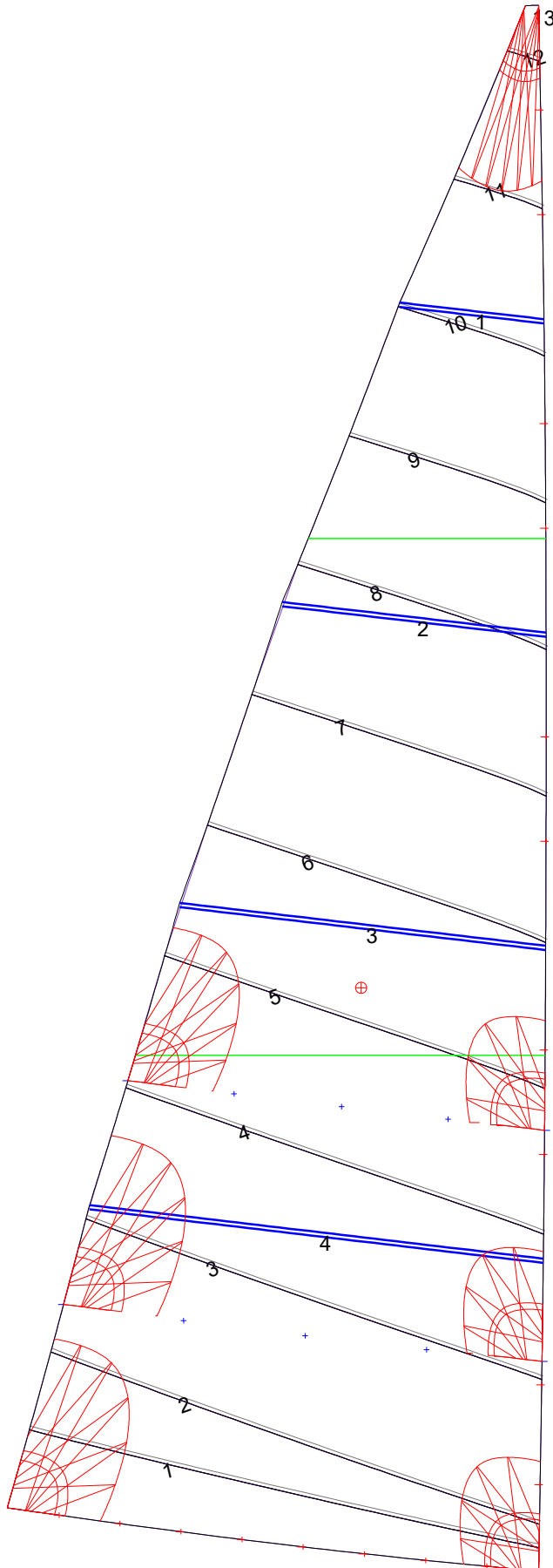
14.785m,	0.000m
12.943m,	-0.034m
11.089m,	-0.059m
9.231m,	-0.069m
7.393m,	-0.070m
5.509m,	-0.065m
3.696m,	-0.052m
1.842m,	-0.030m
0.000m,	0.000m

Fanned Luff (@ 5.00% [0.251m])

100% (14.786m) :	-0.000m	-0.000m
90% (13.308m) :	0.021m	0.054m
80% (11.828m) :	0.038m	0.101m
70% (10.350m) :	0.048m	0.135m
60% (8.872m) :	0.051m	0.154m
50% (7.393m) :	0.051m	0.160m
40% (5.914m) :	0.048m	0.156m
30% (4.436m) :	0.040m	0.137m
20% (2.957m) :	0.029m	0.103m
10% (1.479m) :	0.014m	0.053m
0% (0.000m) :	0.000m	0.000m

Before BSeam

Mainsail: 8000312 Doyel-1 fullbattmain.des



Seam Allowances			
Zone: 1	Split	Radial	Cross
	0.035m	0.035m	0.035m

Edge Excesses			
Sail:	Luff	Leech	Foot
	0.000m	0.000m	0.000m

Total Seam Lengths (m)

Horizontal	36.92
Radial/Vertical	0.00
Bi-Radial Split	0.00

Materials

Material	Area (m ²)	Panels
Material 1	43.48	1,2,3,4,5 6,7,8,9,10 11,12,13