

Mainsail: 8000308 Joseph Fullbattmain.des

Design Info
=====

Design File:
\\NAS\Engineering files\Queenie-Customer Order\Fareast Sails\2024 Orders\Need to be Confirmed\8000308 Joseph m

Initial Design Date: 22/3/2024
Boat:

Comments:

Client:

Design Data
=====

Main

Measurements

Luff geodesic: 37.620Ft
 Leech geodesic: 39.116Ft
 Foot geodesic: 11.470Ft
 Head geodesic: 0.377Ft
 Upper width (MUW): 2.335Ft
 Three-quarter width (MTW): 4.192Ft
 Half width (MHW): 7.246Ft
 Quarter width (MQW): 9.655Ft
 Foot median: 38.063Ft
 ORC Mainsail area: 254.301Ft?
 Surface area: 258.462Ft?
 Clew height: 0.328Ft
 Mast rake: 0.000Ft

Battens

Position	Length	Roach	Angle	Luff	Leech	Full
82.000%	3.351Ft	0.724Ft	74.970?	30.830Ft	32.007Ft	Full
62.000%	6.033Ft	1.029Ft	74.970?	23.308Ft	24.200Ft	Full
42.000%	8.181Ft	0.923Ft	74.970?	15.788Ft	16.394Ft	Full
22.000%	9.949Ft	0.570Ft	74.970?	8.269Ft	8.587Ft	Full

Reefing Points

- 1, Luff: 4.588Ft ; Leech: 4.696Ft ; Offset: 0.000Ft ; Number Eyelets: 3
- 2, Luff: 9.966Ft ; Leech: 10.194Ft ; Offset: 0.000Ft ; Number Eyelets: 3

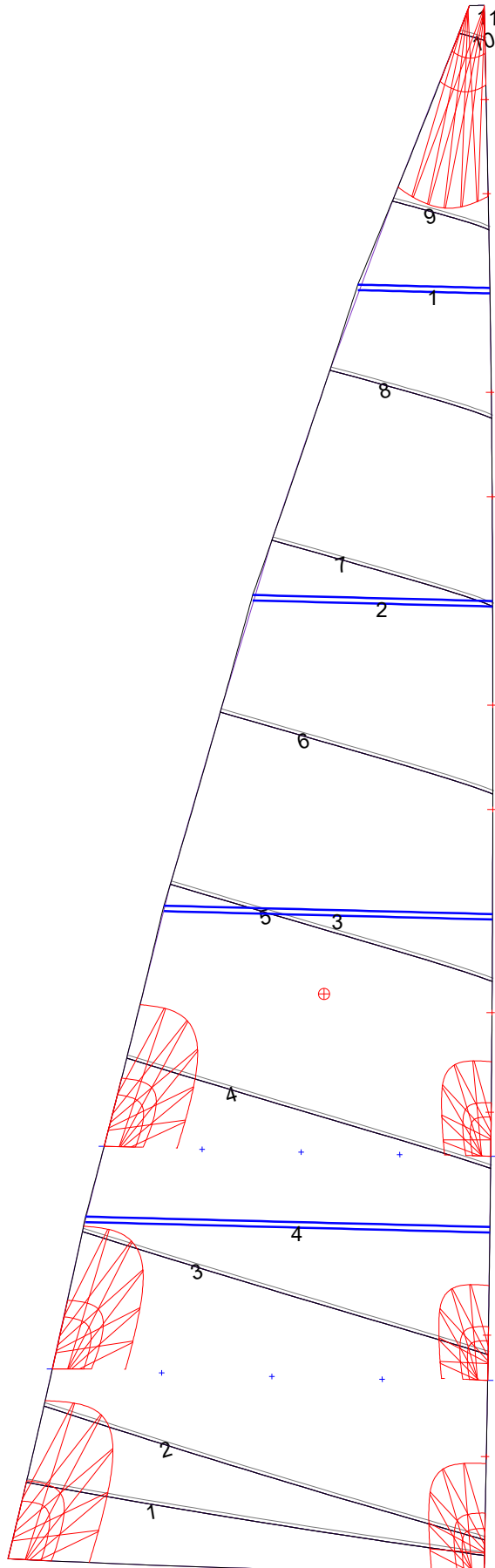
Luff Slides

- 1, Position: 2.758Ft
- 2, Position: 5.668Ft
- 3, Position: 11.027Ft
- 4, Position: 13.418Ft
- 5, Position: 18.298Ft
- 6, Position: 20.805Ft
- 7, Position: 25.818Ft
- 8, Position: 28.324Ft
- 9, Position: 33.094Ft
- 10, Position: 35.357Ft

Luff Curve

		Fanned Luff (@ 5.00% [0.572Ft])	Before BSeam
37.619Ft,	0.000Ft	100% (37.620Ft) :	0.000Ft
32.931Ft,	-0.101Ft	90% (33.859Ft) :	0.140Ft
28.214Ft,	-0.172Ft	80% (30.096Ft) :	0.261Ft
23.485Ft,	-0.203Ft	70% (26.334Ft) :	0.338Ft
18.809Ft,	-0.207Ft	60% (22.572Ft) :	0.376Ft
14.017Ft,	-0.191Ft	50% (18.810Ft) :	0.388Ft
9.405Ft,	-0.153Ft	40% (15.048Ft) :	0.374Ft
4.688Ft,	-0.087Ft	30% (11.286Ft) :	0.332Ft
0.000Ft,	0.000Ft	20% (7.524Ft) :	0.256Ft
		10% (3.762Ft) :	0.142Ft
		0% (0.000Ft) :	0.000Ft

Mainsail: 8000308 Joseph Fullbattmain.des



Seam Allowances

Zone: 1	Split	Radial	Cross
	0.082Ft	0.082Ft	0.082Ft

Edge Excesses

Sail:	Luff	Leech	Foot
	0.000Ft	0.000Ft	0.000Ft

Total Seam Lengths (Ft)

Horizontal	70.83
Radial/Vertical	0.00
Bi-Radial Split	0.00

Materials

Material	Area (Ft ²)	Panels
Material 1	258.28	1,2,3,4,5 6,7,8,9,10 11