

Mainsail: 8000240 Elie-1 fullbattMaisail.des

Design Info
=====

Design File:
\\NAS\Engineering files\Queenie-Customer Order\Fareast Sails\2024 Orders\Need to be Confirmed\8000240 Elie main

Initial Design Date: 2/3/2024
Boat:

Comments:

Client:

Design Data
=====

Main

Measurements

Luff geodesic: 13.365m
 Leech geodesic: 13.972m
 Foot geodesic: 4.310m
 Head geodesic: 0.135m
 Upper width (MUW): 0.792m
 Three-quarter width (MTW): 1.447m
 Half width (MHW): 2.649m
 Quarter width (MQW): 3.568m
 Foot median: 13.636m
 ORC Mainsail area: 33.033m?
 Surface area: 33.728m?
 Clew height: 0.089m
 Mast rake: 0.000m

Battens

Position	Length	Roach	Angle	Luff	Leech	Full
80.282%	1.210m	0.162m	74.058?	10.724m	11.184m	Full
60.381%	2.210m	0.270m	74.058?	8.065m	8.411m	Full
40.244%	3.110m	0.313m	74.058?	5.375m	5.606m	Full
20.117%	3.720m	0.140m	74.058?	2.686m	2.802m	Full

Reefing Points

1, Luff: 1.530m ; Leech: 1.581m ; Offset: 0.000m ; Number Eyelets: 3
 2, Luff: 3.290m ; Leech: 3.391m ; Offset: 0.000m ; Number Eyelets: 2
 3, Luff: 5.980m ; Leech: 6.162m ; Offset: 0.000m ; Number Eyelets: 2

Draft Stripes

1, Luff: 4.409m ; Leech: 4.454m ;
 2, Luff: 8.819m ; Leech: 9.076m ;

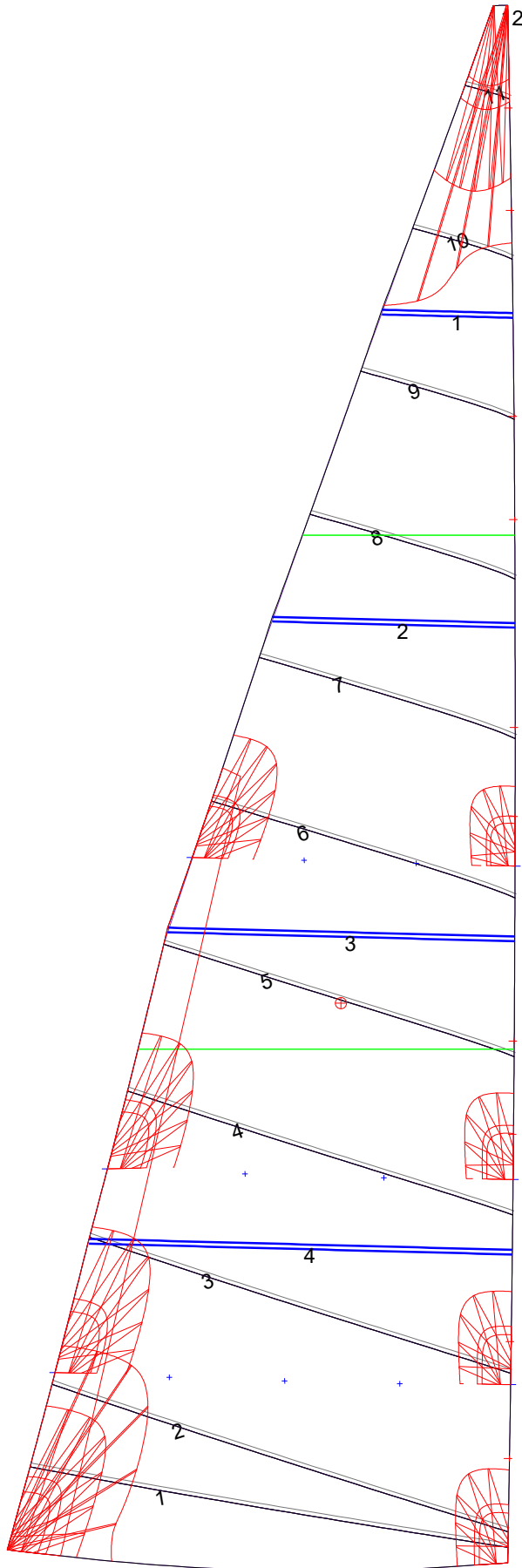
Luff Slides

1, Position: 0.895m
 2, Position: 1.900m
 3, Position: 3.678m
 4, Position: 4.479m
 5, Position: 6.405m
 6, Position: 7.168m
 7, Position: 8.951m
 8, Position: 9.837m
 9, Position: 11.604m
 10, Position: 12.485m

Luff Curve

		Fanned Luff (@ 5.00% [0.215m])	Before BSeam
13.365m,	0.000m	100% (13.365m) :	0.000m
11.699m,	-0.031m	90% (12.029m) :	0.049m
10.023m,	-0.053m	80% (10.692m) :	0.092m
8.344m,	-0.062m	70% (9.356m) :	0.122m
6.682m,	-0.064m	60% (8.019m) :	0.139m
4.980m,	-0.059m	50% (6.683m) :	0.145m
3.341m,	-0.047m	40% (5.346m) :	0.139m
1.665m,	-0.027m	30% (4.009m) :	0.118m
0.000m,	0.000m	20% (2.673m) :	0.084m
		10% (1.337m) :	0.041m
		0% (0.000m) :	0.000m

Mainsail: 8000240 Elie-1 fullbattMailsail.des



Seam Allowances			
Zone: 1	Split	Radial	Cross
	0.035m	0.035m	0.035m

Edge Excesses			
Sail:	Luff	Leech	Foot
	0.000m	0.000m	0.000m

Total Seam Lengths (m)

Horizontal	29.13
Radial/Vertical	0.00
Bi-Radial Split	0.00

Materials

Material	Area (m ²)	Panels
Material 1	33.76	1,2,3,4,5 6,7,8,9,10 11,12