

# Genoa: 8000238 LAURENT-2 hanks jib 1 reef V1.des

Design Info  
=====

Design File:  
\\NAS\Engineering files\Queenie-Customer Order\Fareast Sails\2024 Orders\Need to be Confirmed\8000238 LAURENT-2

Initial Design Date: 1/3/2024  
Boat:

Comments:  
1 REEFed 14.98m2

Client:

Design Data  
=====

Genoa

## Measurements

Luff geodesic:	9.500m
Leech geodesic:	8.080m
Foot geodesic:	4.940m
Headboard width:	0.065m
Luff perpendicular (HLP):	4.247m
Upper width (HUW):	0.510m
Three-quarter width (HTW):	0.980m
Half width (HHW):	1.994m
Quarter width (HQW):	3.097m
Foot median:	8.605m
ORC Headsail area:	19.596m <sup>2</sup>
IRC Headsail area:	19.544m <sup>2</sup>
Surface area:	19.842m <sup>2</sup>
Forestay height:	10.550m
J:	3.950m

## Reefing Points

1, Luff: 0.955m ; Leech: 1.150m ; Offset: 0.000m ; Number Eyelets: 3

## Draft Stripes

1, Luff: 3.152m ; Leech: 2.005m ;  
2, Luff: 6.298m ; Leech: 4.988m ;

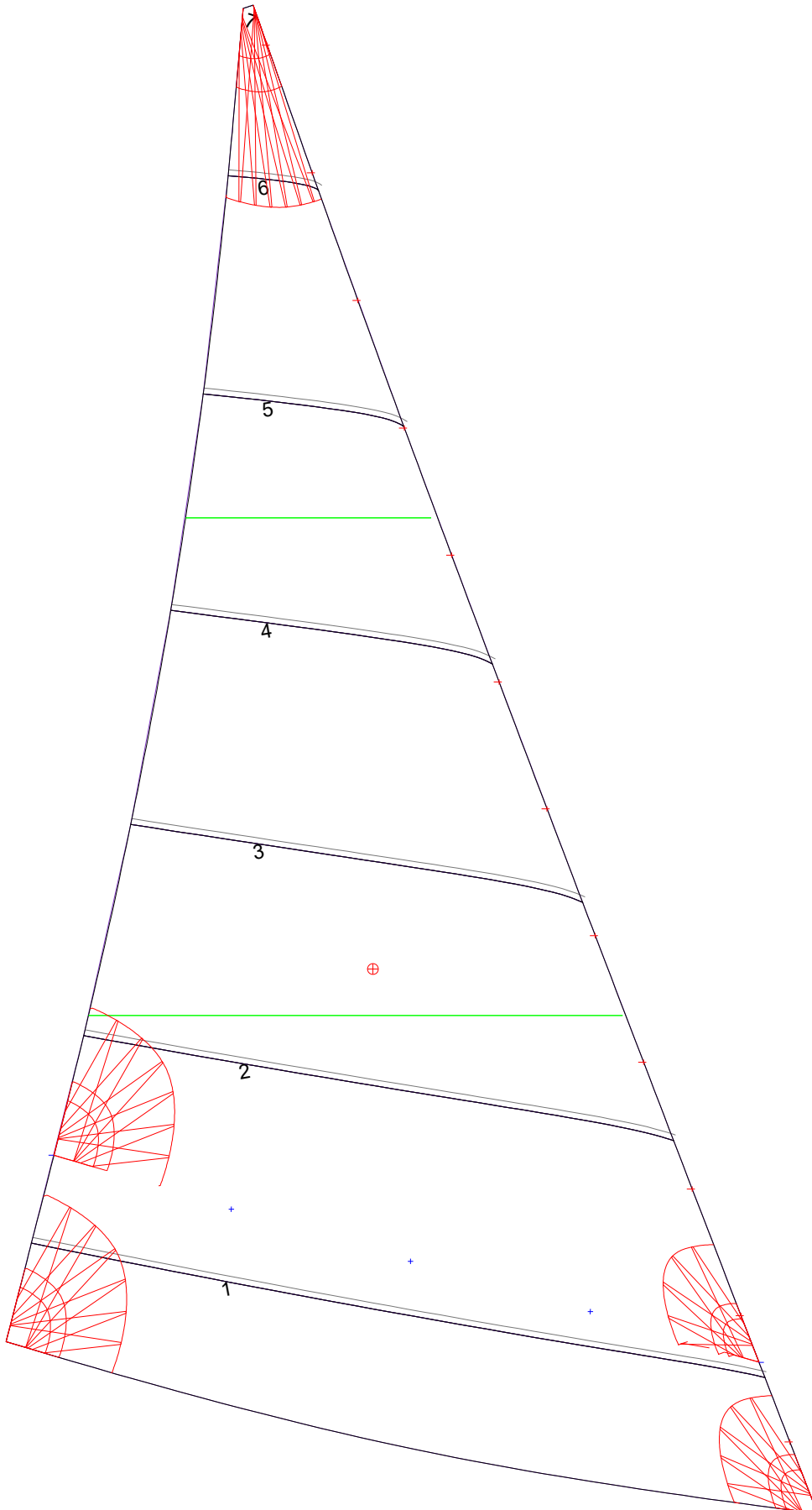
## Luff Slides

1, Position: 0.450m  
2, Position: 1.250m  
3, Position: 2.050m  
4, Position: 2.850m  
5, Position: 3.650m  
6, Position: 4.450m  
7, Position: 5.250m  
8, Position: 6.050m  
9, Position: 6.850m  
10, Position: 7.650m  
11, Position: 8.450m  
12, Position: 9.250m

## Luff Curve

		Fanned Luff (@ 5.00% [0.239m])	Before BSeam	
9.498m,	0.000m	100% (9.498m) :	0.000m	-0.000m
8.709m,	0.032m	90% (8.549m) :	-0.036m	-0.001m
7.836m,	0.058m	80% (7.599m) :	-0.063m	0.003m
7.067m,	0.072m	70% (6.649m) :	-0.077m	0.013m
6.174m,	0.077m	60% (5.699m) :	-0.080m	0.025m
4.727m,	0.067m	50% (4.749m) :	-0.074m	0.035m
3.087m,	0.046m	40% (3.800m) :	-0.063m	0.041m
1.605m,	0.023m	30% (2.849m) :	-0.049m	0.041m
0.000m,	0.000m	20% (1.900m) :	-0.034m	0.036m
		10% (0.949m) :	-0.018m	0.022m
		0% (0.000m) :	0.000m	0.000m

# Genoa: 8000238 LAURENT-2 hanks jib 1 reef V1.des



Seam Allowances			
Zone:	Split	Radial	Cross
1	0.035m	0.035m	0.035m

Edge Excesses			
Sail:	Luff	Leech	Foot
	0.000m	0.000m	0.000m

### Total Seam Lengths (m)

Horizontal	14.85
Radial/Vertical	0.00
Bi-Radial Split	0.00

### Materials

Material	Area (m <sup>2</sup> )	Panels
Material 1	19.90	1,2,3,4,5 6,7