

# Spinnaker: 8000237 Eduard-3 Farr30 sym spin.des

Design Info  
=====

Design File:  
\\NAS\Engineering files\Queenie-Customer Order\Fareast Sails\2024 Orders\Need to be Confirmed\8000237 Eduard m

Initial Design Date: 6/3/2024  
Boat:

Comments:

Client:

Design Data  
=====

## Spinnaker

### Measurements

Leech length (SLE): 13.700m  
Foot length (SFL): 8.058m  
Headboard Width: 0.015m  
Maximum width (0.5%): 8.058m  
Three-quarter width: 4.820m  
Half width (SHW): 7.418m  
Quarter width: 7.784m  
Foot median: 14.836m  
ORC Spinnaker Area: 86.147m?  
IRC Spinnaker Area: 85.802m?  
Surface Area: 90.783m?  
Hoist height: 13.700m  
Pole Length: 4.740m

### Luff Curve

15.500m, 0.000m  
11.625m, 0.000m  
7.750m, 0.000m  
3.875m, 0.000m  
0.000m, 0.000m

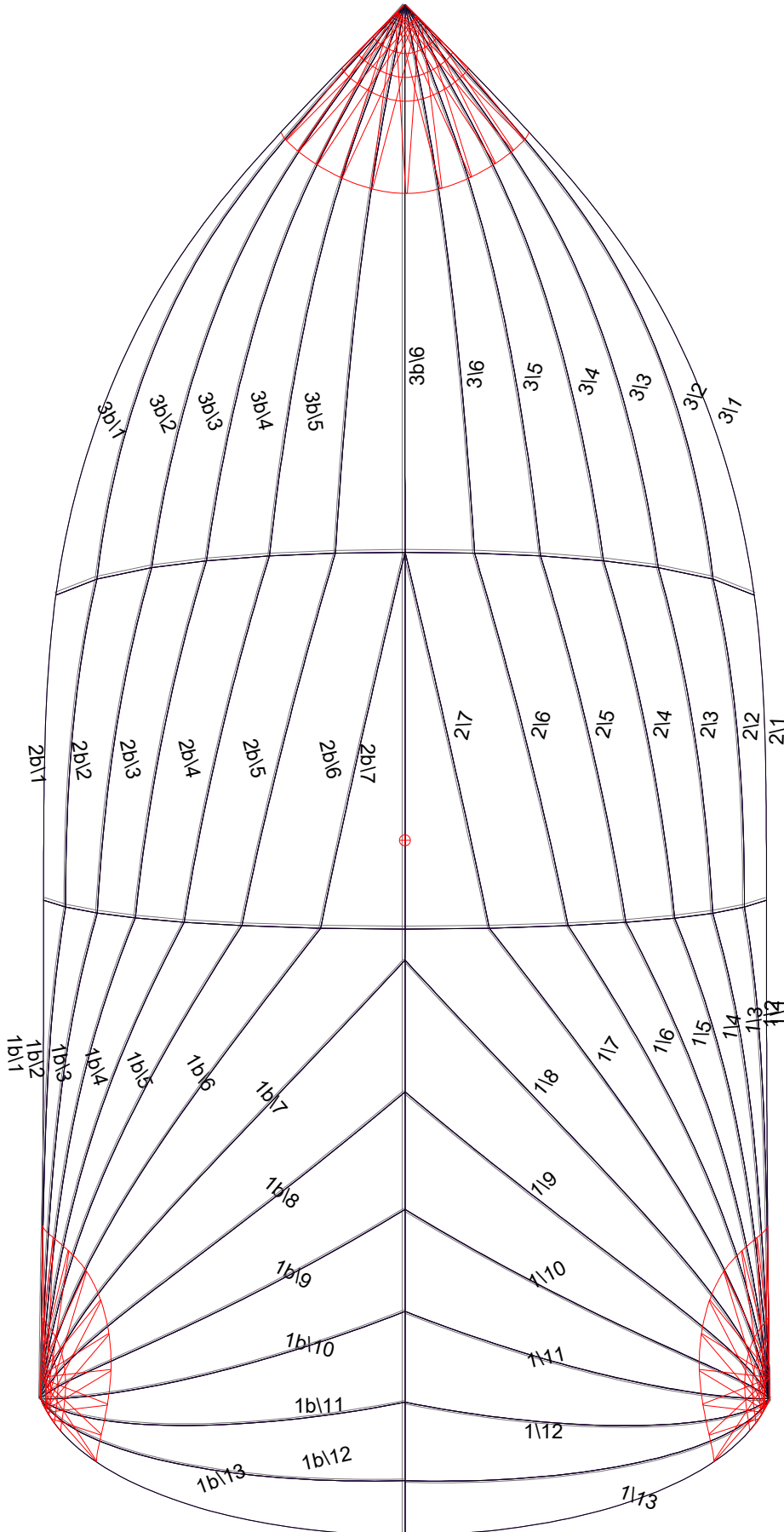
### Fanned Luff (@ 5.00% [0.316m])

100% (6.695m) : 0.000m  
88% (5.864m) : -1.726m  
57% (3.834m) : -2.559m  
76% (5.114m) : -1.588m  
95% (6.361m) : -0.748m  
67% (4.457m) : -1.423m  
65% (4.342m) : -0.274m  
53% (3.572m) : 0.838m  
35% (2.338m) : 0.782m  
18% (1.233m) : 0.386m  
0% (0.000m) : 0.000m

### Before BSeam

0.000m  
1.197m  
2.122m  
2.343m  
2.287m  
2.032m  
1.659m  
1.253m  
0.847m  
0.422m  
0.000m

# Spinnaker: 8000237 Eduard-3 Farr30 sym spin.des



## Seam Allowances

Zone:	Split	Radial	Cross
Zone: 1/a	0.025m	0.015m	0.025m
Zone: 1/b	0.025m	0.015m	0.025m
Zone: 2/a	0.025m	0.015m	0.025m
Zone: 2/b	0.025m	0.015m	0.025m
Zone: 3/a	0.025m	0.015m	0.025m
Zone: 3/b	0.025m	0.015m	0.025m

## Edge Excesses

Sail:	Luff	Leech	Foot
Sail:	0.000m	0.000m	0.000m

## Total Seam Lengths (m)

Horizontal	14.96
Radial/Vertical	222.10
Bi-Radial Split	14.97

## Materials

Material	Area (m <sup>2</sup> )	Panels
Material 1	91.40	1\1, 1\2, 1\3, 1\4, 1\5 1\6, 1\7, 1\8, 1\9, 1\10 1\11, 1\12, 1\13, 1b\1, 1b\2 1b\3, 1b\4, 1b\5, 1b\6, 1b\7 1b\8, 1b\9, 1b\10, 1b\11, 1b\12 1b\13, 2\1, 2\2, 2\3, 2\4 2\5, 2\6, 2\7, 2b\7, 2b\6 2b\5, 2b\4, 2b\3, 2b\2, 2b\1 3\1, 3\2, 3\3, 3\4, 3\5 3\6, 3b\6, 3b\5, 3b\4, 3b\3 3b\2, 3b\1