

Mainsail: 8000222 William Tayana 37 fullbat main.des

Design Info
=====

Design File:
\\NAS\Engineering files\Queenie-Customer Order\Fareast Sails\2024 Orders\Need to be Confirmed\8000222 William T

Initial Design Date: 12/3/2024
Boat:

Comments:

Client:

Design Data
=====

Main

Measurements

Luff geodesic: 44.797Ft
 Leech geodesic: 46.886Ft
 Foot geodesic: 14.603Ft
 Head geodesic: 0.377Ft
 Upper width (MUW): 2.806Ft
 Three-quarter width (MTW): 5.161Ft
 Half width (MHW): 9.139Ft
 Quarter width (MQW): 12.248Ft
 Foot median: 45.728Ft
 ORC Mainsail area: 381.373Ft?
 Surface area: 390.532Ft?
 Clew height: 0.328Ft
 Mast rake: 0.000Ft

Battens

Position	Length	Roach	Angle	Luff	Leech	Full
80.000%	4.422Ft	0.785Ft	73.793?	35.815Ft	37.386Ft	Full
60.000%	7.834Ft	1.112Ft	73.793?	26.857Ft	28.040Ft	Full
40.000%	10.616Ft	1.011Ft	73.793?	17.902Ft	18.693Ft	Full
20.000%	12.811Ft	0.584Ft	73.793?	8.950Ft	9.347Ft	Full

Reefing Points

- 1, Luff: 5.463Ft ; Leech: 5.632Ft ; Offset: 0.000Ft ; Number Eyelets: 3
- 2, Luff: 11.866Ft ; Leech: 12.228Ft ; Offset: 0.000Ft ; Number Eyelets: 3
- 3, Luff: 19.031Ft ; Leech: 19.621Ft ; Offset: 0.000Ft ; Number Eyelets: 2

Draft Stripes

- 1, Luff: 14.777Ft ; Leech: 14.933Ft ;
- 2, Luff: 29.557Ft ; Leech: 30.397Ft ;

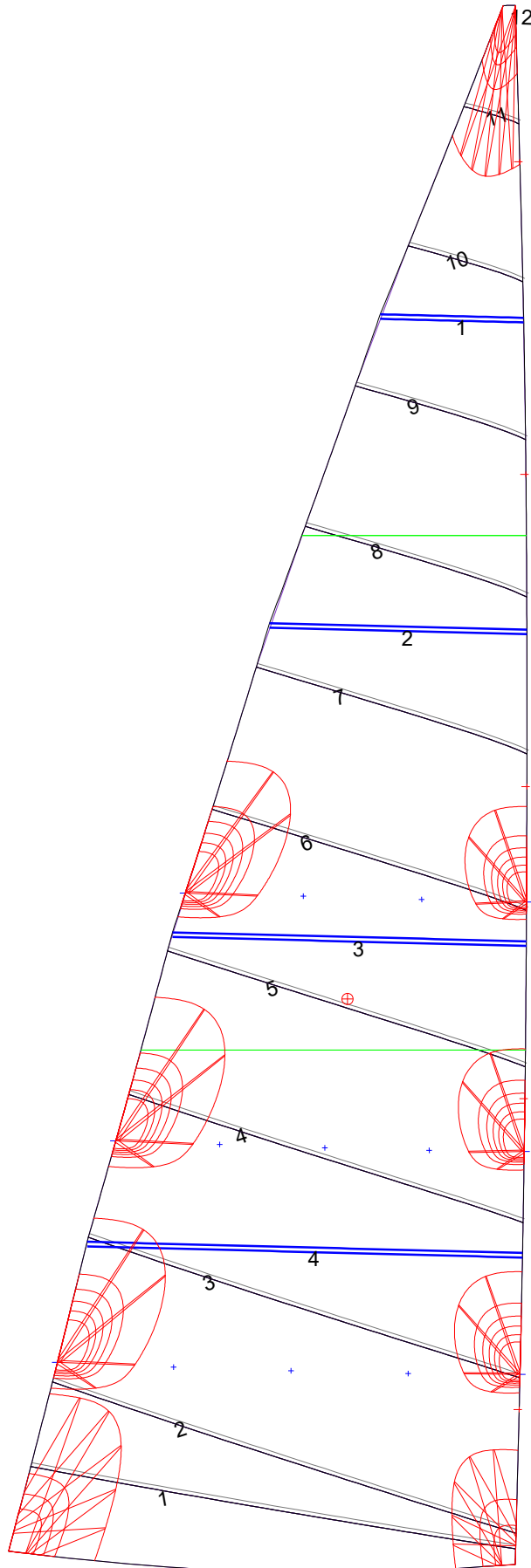
Luff Slides

- 1, Position: 4.449Ft
- 2, Position: 13.380Ft
- 3, Position: 22.347Ft
- 4, Position: 31.316Ft
- 5, Position: 40.299Ft

Luff Curve

		Fanned Luff (@ 5.00% [0.727Ft])	Before BSeam
44.793Ft,	0.000Ft	100% (44.797Ft) :	0.000Ft
39.211Ft,	-0.163Ft	90% (40.319Ft) :	0.219Ft
33.595Ft,	-0.280Ft	80% (35.838Ft) :	0.406Ft
27.965Ft,	-0.330Ft	70% (31.359Ft) :	0.530Ft
22.396Ft,	-0.336Ft	60% (26.879Ft) :	0.595Ft
16.690Ft,	-0.311Ft	50% (22.399Ft) :	0.609Ft
11.198Ft,	-0.249Ft	40% (17.918Ft) :	0.585Ft
5.582Ft,	-0.141Ft	30% (13.439Ft) :	0.504Ft
0.000Ft,	0.000Ft	20% (8.959Ft) :	0.369Ft
		10% (4.480Ft) :	0.188Ft
		0% (0.000Ft) :	0.000Ft

Mainsail: 8000222 William Tayana 37 fullbat main.des



Edge Excesses			
Sail:	Luff	Leech	Foot
	0.000Ft	0.000Ft	0.000Ft

Total Seam Lengths (Ft)

Horizontal	101.53
Radial/Vertical	0.00
Bi-Radial Split	0.00

Materials

Material	Area (Ft ²)	Panels
Material 1	390.53	1,2,3,4,5 6,7,8,9,10 11,12