

# Mainsail: 8000221 Yves UFO 34 fullbattmain.des

Design Info  
=====

Design File:  
\\NAS\Engineering files\Queenie-Customer Order\Fareast Sails\2024 Orders\Need to be Confirmed\8000221 Yves UFO

Initial Design Date: 23/2/2024  
Boat:

Comments:

Client:

Design Data  
=====

Main

Measurements

Luff geodesic:	11.682m
Leech geodesic:	12.052m
Foot geodesic:	3.220m
Head geodesic:	0.115m
Upper width (MUW):	0.702m
Three-quarter width (MTW):	1.260m
Half width (MHW):	2.129m
Quarter width (MQW):	2.764m
Foot median:	11.857m
ORC Mainsail area:	22.861m <sup>2</sup>
Surface area:	23.372m <sup>2</sup>
Clew height:	0.100m
Mast rake:	0.000m

Battens

Position	Length	Roach	Angle	Luff	Leech	Full
80.000%	1.103m	0.285m	76.616°	9.343m	9.614m	Full
60.000%	1.858m	0.370m	76.616°	7.009m	7.211m	Full
40.000%	2.439m	0.326m	76.616°	4.676m	4.807m	Full
20.000%	2.879m	0.188m	76.616°	2.343m	2.404m	Full

Reefing Points

- 1, Luff: 1.425m ; Leech: 1.447m ; Offset: 0.000m ; Number Eyelets: 0
- 2, Luff: 3.211m ; Leech: 3.262m ; Offset: 0.000m ; Number Eyelets: 0

Draft Stripes

- 1, Luff: 3.854m ; Leech: 3.836m ;
- 2, Luff: 7.708m ; Leech: 7.807m ;

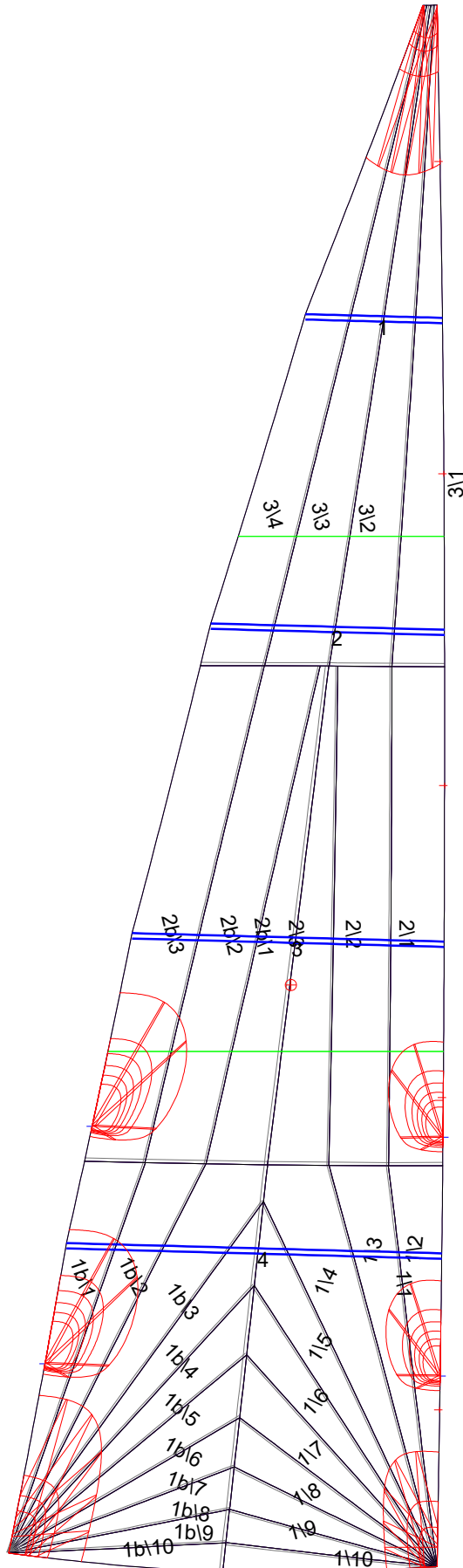
Luff Slides

- 1, Position: 1.172m
- 2, Position: 3.510m
- 3, Position: 5.843m
- 4, Position: 8.176m
- 5, Position: 10.512m

Luff Curve

		Fanned Luff (@ 5.00% [0.160m])	Before BSeam
11.682m,	0.000m	100% (11.682m) :	0.000m
10.226m,	-0.027m	90% (10.514m) :	0.043m
8.761m,	-0.046m	80% (9.346m) :	0.080m
7.293m,	-0.055m	70% (8.178m) :	0.104m
5.841m,	-0.056m	60% (7.009m) :	0.117m
4.353m,	-0.051m	50% (5.841m) :	0.118m
2.920m,	-0.041m	40% (4.673m) :	0.112m
1.456m,	-0.023m	30% (3.505m) :	0.095m
0.000m,	0.000m	20% (2.336m) :	0.069m
		10% (1.168m) :	0.034m
		0% (0.000m) :	0.000m

# Mainsail: 8000221 Yves UFO 34 fullbattmain.des



## Seam Allowances

	Split	Radial	Cross
Zone: 1/a	0.025m	0.015m	0.025m
Zone: 1/b	0.025m	0.015m	0.025m
Zone: 2/a	0.025m	0.015m	0.025m
Zone: 2/b	0.025m	0.015m	0.025m
Zone: 3	0.025m	0.015m	0.025m

## Edge Excesses

Sail:	Luff	Leech	Foot
	0.000m	0.000m	0.000m

## Total Seam Lengths (m)

Horizontal	4.70
Radial/Vertical	72.98
Bi-Radial Split	7.02

## Materials

Material	Area (m <sup>2</sup> )	Panels
Material 1	23.41	1\1,1\2,1\3,1\4,1\5 1\6,1\7,1\8,1\9,1\10 1b\1,1b\2,1b\3,1b\4,1b\5 1b\6,1b\7,1b\8,1b\9,1b\10 2\1,2\2,2\3,2b\1,2b\2 2b\3,3\1,3\2,3\3,3\4