

# Mainsail: 8000218 Jason-1 Wildcat 350 Catamaran MainV2.des

## Design Info =====

Design File:  
\\NAS\Engineering files\Queenie-Customer Order\Fareast Sails\2024 Orders\Need to be Confirmed\8000218 Jason V2

Initial Design Date: 5/4/2024  
Boat:  
Wildcat 350 Catamaran  
Client:

Comments:  
Tack angle 82.2 degree

## Design Data =====

### Main

#### Measurements

Luff geodesic: 12.870m  
Leech geodesic: 13.220m  
Foot geodesic: 4.800m  
Head geodesic: 0.850m  
Upper width (MUW): 1.665m  
Three-quarter width (MTW): 2.805m  
Half width (MHW): 4.068m  
Quarter width (MQW): 4.605m  
Foot median: 12.960m  
ORC Mainsail area: 45.757m?  
Surface area: 48.393m?  
Clew height: 0.100m  
Mast rake: 0.000m

#### Battens

Position	Length	Roach	Angle	Luff	Leech	Full
100.000%	1.101m	0.000m	110.134?	12.184m	13.106m	Full
88.298%	2.280m	0.865m	81.352?	11.211m	11.572m	Full
73.494%	3.352m	1.268m	81.352?	9.309m	9.632m	Full
58.192%	3.984m	1.263m	81.352?	7.346m	7.627m	Full
40.535%	4.432m	1.024m	81.352?	5.082m	5.313m	Full
22.037%	4.699m	0.620m	81.352?	2.714m	2.888m	Full

#### Reefing Points

1, Luff: 2.183m ; Leech: 2.184m ; Offset: 0.000m ; Number Eyelets: 3  
2, Luff: 4.496m ; Leech: 4.490m ; Offset: 0.000m ; Number Eyelets: 3  
3, Luff: 6.876m ; Leech: 6.853m ; Offset: 0.000m ; Number Eyelets: 2

#### Draft Stripes

1, Luff: 3.211m ; Leech: 2.589m ;  
2, Luff: 6.425m ; Leech: 5.854m ;  
3, Luff: 9.644m ; Leech: 9.171m ;

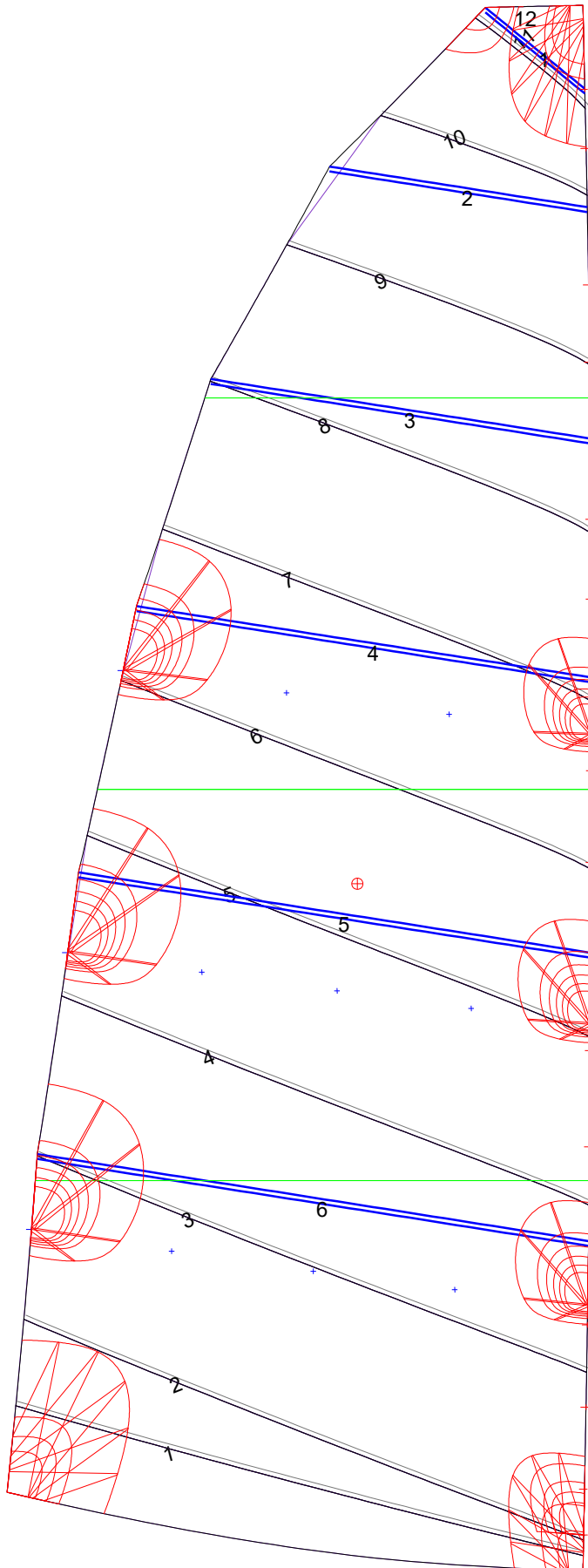
#### Luff Slides

1, Position: 0.674m  
2, Position: 1.349m  
3, Position: 2.024m  
4, Position: 3.488m  
5, Position: 4.279m  
6, Position: 5.824m  
7, Position: 6.580m  
8, Position: 7.990m  
9, Position: 8.646m  
10, Position: 9.936m  
11, Position: 10.571m  
12, Position: 11.693m  
13, Position: 12.179m

#### Luff Curve

		Fanned Luff (@ 5.00% [0.237m])	Before BSeam
12.869m,	0.000m	100% (12.870m) :	0.000m
11.266m,	-0.034m	90% (11.584m) :	0.018m
9.652m,	-0.059m	80% (10.296m) :	0.125m
8.034m,	-0.070m	70% (9.009m) :	0.158m
6.435m,	-0.071m	60% (7.722m) :	0.169m
4.795m,	-0.066m	50% (6.435m) :	0.164m
3.217m,	-0.052m	40% (5.148m) :	0.150m
1.604m,	-0.030m	30% (3.861m) :	0.126m
0.000m,	0.000m	20% (2.574m) :	0.091m
		10% (1.288m) :	0.012m
		0% (0.000m) :	0.000m

# Mainsail: 8000218 Jason-1 Wildcat 350 Catamaran MainV2.des



Seam Allowances			
Zone: 1	Split	Radial	Cross
	0.038m	0.038m	0.038m

Edge Excesses			
Sail:	Luff	Leech	Foot
	0.000m	0.000m	0.000m

## Total Seam Lengths (m)

Horizontal	42.02
Radial/Vertical	0.00
Bi-Radial Split	0.00

## Materials

Material	Area (m <sup>2</sup> )	Panels
Material 1	48.35	1,2,3,4,5 6,7,8,9,10 11,12