

Mainsail: 8000218 Jason-1 Wildcat 350 Catamaran Main.des

Design Info
=====

Design File:
\\NAS\Engineering files\Queenie-Customer Order\Fareast Sails\2024 Orders\Need to be Confirmed\8000218 Jason W

Initial Design Date: 1/3/2024
Boat:
Wildcat 350 Catamaran
Client:

Comments:

Design Data
=====

Main

Measurements

Luff geodesic: 12.870m
Leech geodesic: 13.204m
Foot geodesic: 4.850m
Head geodesic: 1.200m
Upper width (MUW): 1.693m
Three-quarter width (MTW): 2.469m
Half width (MHW): 3.441m
Quarter width (MQW): 4.189m
Foot median: 12.950m
ORC Mainsail area: 41.998m?
Surface area: 43.403m?
Clew height: 0.100m
Mast rake: 0.000m

Battens

Position	Length	Roach	Angle	Luff	Leech	Full
100.000%	1.523m	0.000m	110.134?	11.949m	13.118m	Full
88.298%	2.130m	0.416m	81.352?	11.197m	11.583m	Full
74.375%	2.707m	0.428m	81.352?	9.428m	9.756m	Full
58.139%	3.293m	0.393m	81.352?	7.368m	7.627m	Full
41.818%	3.797m	0.304m	81.352?	5.299m	5.486m	Full
22.890%	4.298m	0.159m	81.352?	2.901m	3.003m	Full

Reefing Points

- 1, Luff: 1.567m ; Leech: 1.574m ; Offset: 0.000m ; Number Eyelets: 3
- 2, Luff: 3.404m ; Leech: 3.413m ; Offset: 0.000m ; Number Eyelets: 3
- 3, Luff: 5.590m ; Leech: 5.596m ; Offset: 0.000m ; Number Eyelets: 2

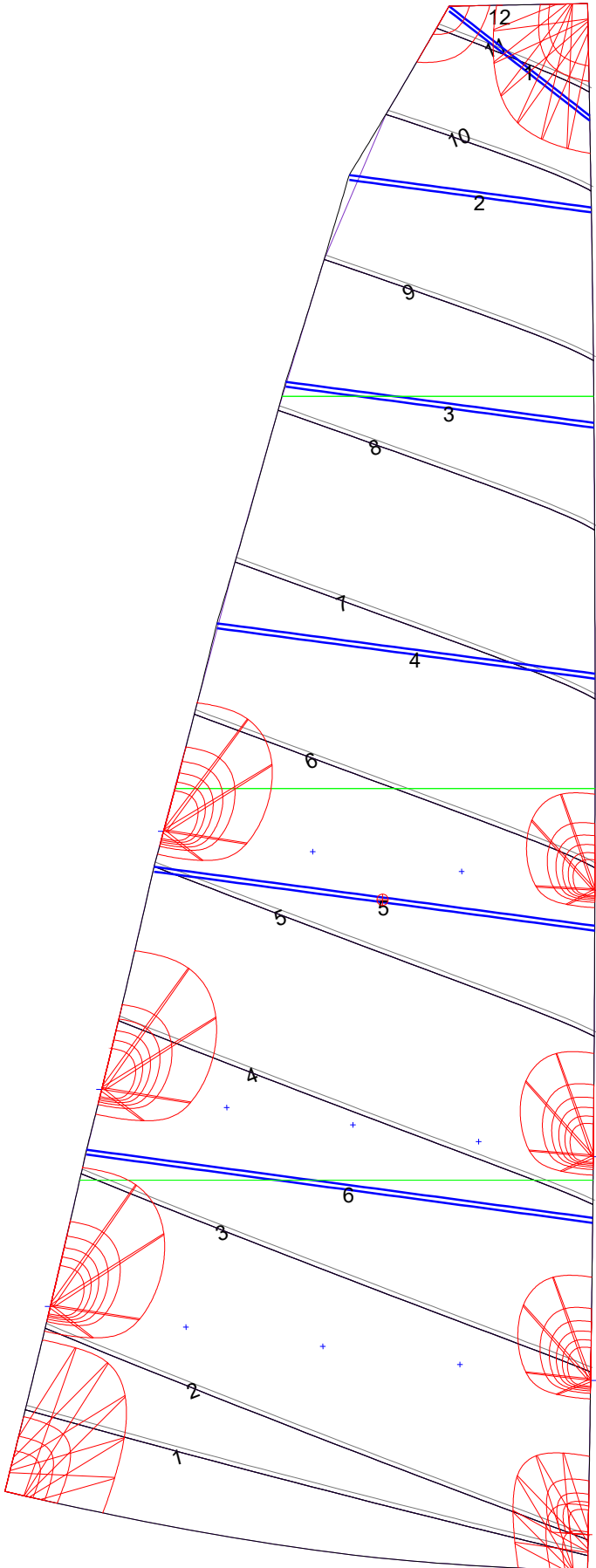
Draft Stripes

- 1, Luff: 3.212m ; Leech: 2.643m ;
- 2, Luff: 6.427m ; Leech: 5.960m ;
- 3, Luff: 9.645m ; Leech: 9.292m ;

Luff Curve

		Fanned Luff (@ 5.00% [0.239m])	Before BSeam
12.870m,	0.000m	100% (12.870m) :	0.000m
11.266m,	-0.030m	90% (11.584m) :	0.015m
9.652m,	-0.051m	80% (10.296m) :	0.030m
8.035m,	-0.060m	70% (9.009m) :	0.038m
6.435m,	-0.061m	60% (7.722m) :	0.041m
4.795m,	-0.057m	50% (6.435m) :	0.041m
3.217m,	-0.045m	40% (5.148m) :	0.038m
1.604m,	-0.026m	30% (3.861m) :	0.032m
0.000m,	0.000m	20% (2.574m) :	0.023m
		10% (1.288m) :	0.011m
		0% (0.000m) :	0.000m

Mainsail: 8000218 Jason-1 Wildcat 350 Catamaran Main.des



Seam Allowances			
Zone: 1	Split	Radial	Cross
	0.038m	0.038m	0.038m

Edge Excesses			
Sail:	Luff	Leech	Foot
	0.000m	0.000m	0.000m

Total Seam Lengths (m)

Horizontal	38.19
Radial/Vertical	0.00
Bi-Radial Split	0.00

Materials

Material	Area (m ²)	Panels
Material 1	43.40	1,2,3,4,5 6,7,8,9,10 11,12