

# Mainsail: 8000206 Otto H-boat Mainsail.des

Design Info  
=====

Design File:  
\\NAS\Engineering files\Queenie-Customer Order\Fareast Sails\2024 Orders\Need to be Confirmed\8000206 Otto H-bo

Initial Design Date: 20/2/2024  
Boat:  
H-Boat  
Client:

Comments:

Design Data  
=====

## Main

### Measurements

Luff geodesic: 8.415m  
Leech geodesic: 8.836m  
Foot geodesic: 2.871m  
Head geodesic: 0.115m  
Upper width (MUW): 0.594m  
Three-quarter width (MTW): 1.088m  
Half width (MHW): 1.820m  
Quarter width (MQW): 2.424m  
Foot median: 8.576m  
ORC Mainsail area: 14.348m?  
Surface area: 14.614m?  
Clew height: -0.226m  
Mast rake: 0.000m

### Battens

Position	Length	Roach	Angle	Luff	Leech	Full
75.000%	1.175m	0.176m	90.000?	6.031m	6.614m	Full
50.000%	0.700m	0.142m	90.000?	3.718m	4.409m	
25.000%	0.700m	0.094m	90.000?	1.423m	2.204m	

### Reefing Points

1, Luff: 1.111m ; Leech: 1.151m ; Offset: 0.000m ; Number Eyelets: 2  
2, Luff: 2.315m ; Leech: 2.396m ; Offset: 0.000m ; Number Eyelets: 2

### Draft Stripes

1, Luff: 2.778m ; Leech: 2.819m ;  
2, Luff: 5.554m ; Leech: 5.726m ;

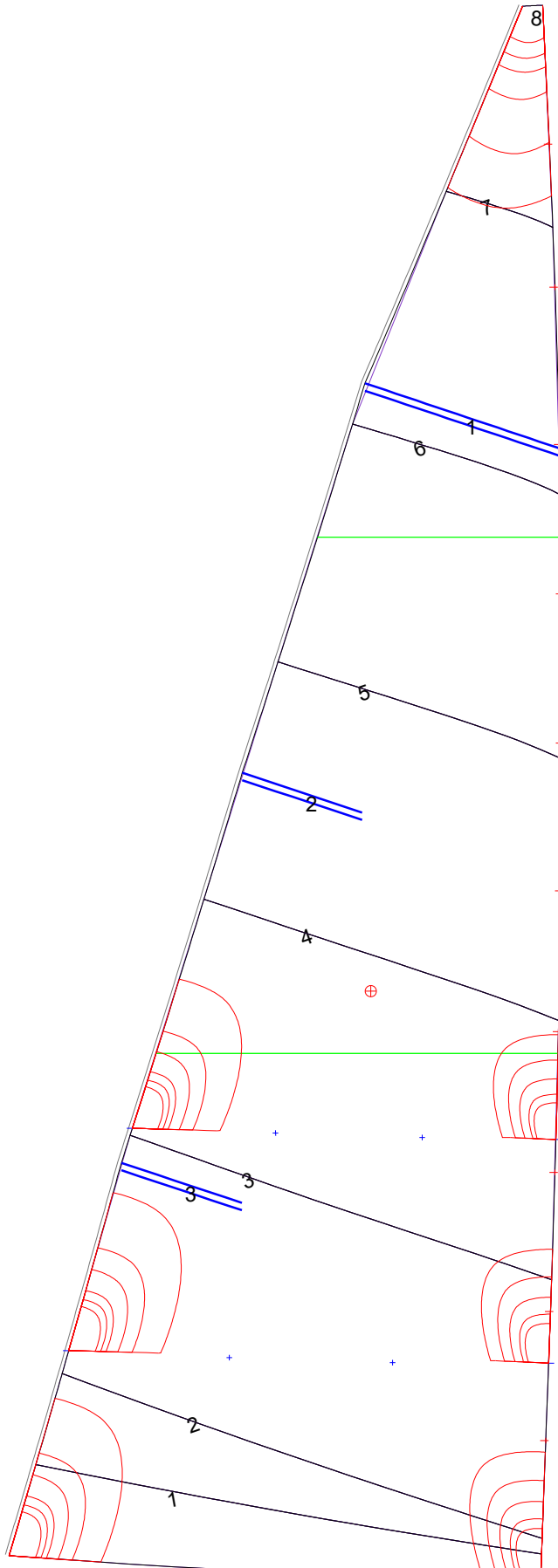
### Luff Slides

1, Position: 0.694m  
2, Position: 1.388m  
3, Position: 2.138m  
4, Position: 2.894m  
5, Position: 3.651m  
6, Position: 4.446m  
7, Position: 5.249m  
8, Position: 6.051m  
9, Position: 6.897m  
10, Position: 7.667m

### Luff Curve

		Fanned Luff (@ 5.00% [0.143m])	Before BSeam
8.413m,	0.000m	100% (8.415m) :	0.000m
7.244m,	-0.055m	90% (7.574m) :	0.031m
6.310m,	-0.086m	80% (6.732m) :	0.111m
5.223m,	-0.105m	70% (5.891m) :	0.150m
4.207m,	-0.104m	60% (5.049m) :	0.170m
3.180m,	-0.095m	50% (4.208m) :	0.175m
2.103m,	-0.072m	40% (3.366m) :	0.166m
0.000m,	0.000m	30% (2.524m) :	0.143m
		20% (1.683m) :	0.103m
		10% (0.841m) :	0.052m
		0% (0.000m) :	0.000m

# Mainsail: 8000206 Otto H-boat Mainsail.des



Seam Allowances			
Zone: 1	Split	Radial	Cross
	0.000m	0.000m	0.000m

Edge Excesses			
Sail:	Luff	Leech	Foot
	0.000m	0.020m	0.000m

### Total Seam Lengths (m)

Horizontal	0.00
Radial/Vertical	0.00
Bi-Radial Split	0.00

### Materials

Material	Area (m <sup>2</sup> )	Panels
Material 1	14.59	1,2,3,4,5 6,7,8