

Mainsail: 8000122 Ian Newick Val Trimaran squarehead mainsailV1.des

Design Info
=====

Design File:
\\NAS\Engineering files\Queenie-Customer Order\Fareast Sails\2024 Orders\Need to be Confirmed\8000122 Ian\8000

Initial Design Date: 20/2/2024
Boat:

Comments:

Client:

Design Data
=====

Main

Measurements

Luff geodesic: 10.890m
Leech geodesic: 11.150m
Foot geodesic: 4.000m
Head geodesic: 0.940m
Upper width (MUW): 1.385m
Three-quarter width (MTW): 2.213m
Half width (MHW): 3.205m
Quarter width (MQW): 3.685m
Foot median: 10.914m
ORC Mainsail area: 31.246m?
Surface area: 32.529m?
Clew height: 0.162m
Mast rake: 1.222m

Battens

Position	Length	Roach	Angle	Luff	Leech	Full
100.000%	1.106m	0.000m	104.718?	10.318m	11.067m	Full
90.393%	1.606m	0.312m	85.186?	9.641m	10.004m	Full
81.385%	2.185m	0.584m	83.895?	8.690m	9.007m	Full
65.880%	2.900m	0.789m	83.335?	7.025m	7.291m	Full
47.752%	3.375m	0.703m	82.648?	5.091m	5.285m	Full
29.276%	3.675m	0.467m	81.971?	3.132m	3.240m	Full

Reefing Points

1, Luff: 1.328m ; Leech: 1.324m ; Offset: 0.000m ; Number Eyelets: 0
2, Luff: 2.884m ; Leech: 2.874m ; Offset: 0.000m ; Number Eyelets: 0
3, Luff: 4.626m ; Leech: 4.606m ; Offset: 0.000m ; Number Eyelets: 0

Draft Stripes

1, Luff: 2.721m ; Leech: 2.564m ;
2, Luff: 5.442m ; Leech: 5.288m ;
3, Luff: 8.165m ; Leech: 8.033m ;

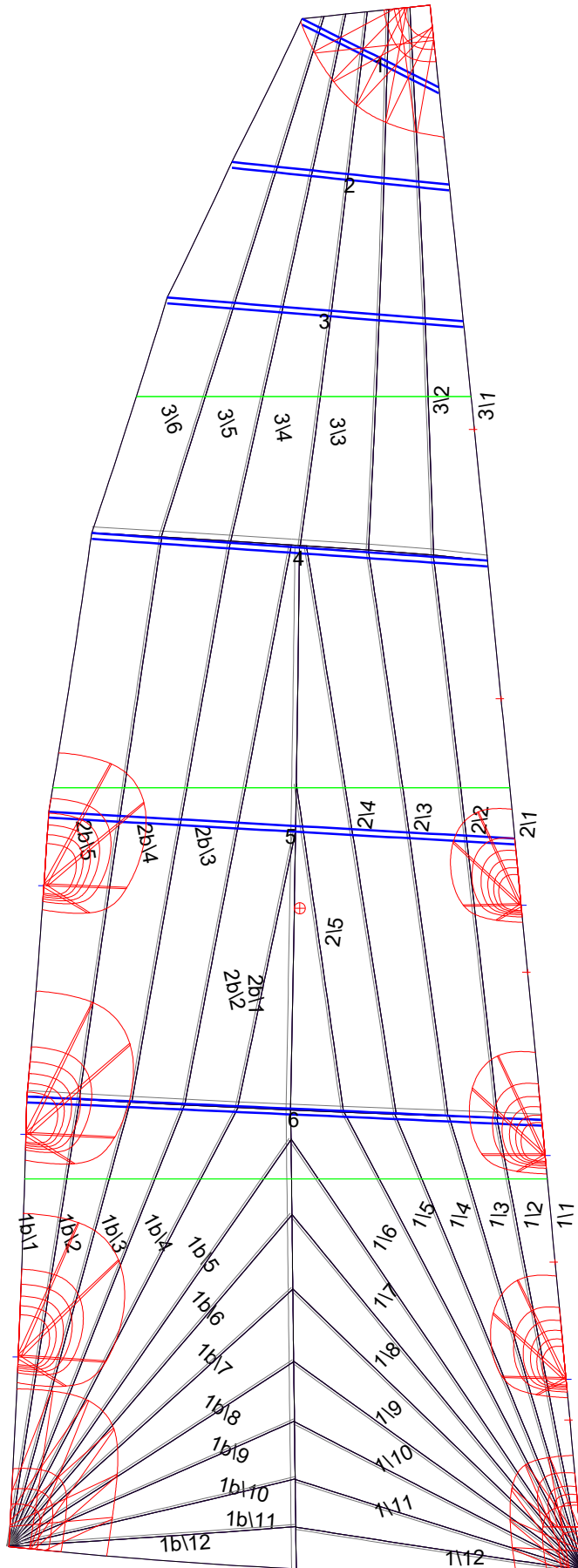
Luff Slides

1, Position: 1.043m
2, Position: 2.142m
3, Position: 4.159m
4, Position: 6.061m
5, Position: 7.935m

Luff Curve

		Fanned Luff (@ 5.00% [0.199m])	Before BSeam
10.890m,	0.000m	100% (10.890m) :	0.000m -0.000m
9.533m,	-0.011m	90% (9.801m) :	0.005m 0.037m
8.167m,	-0.018m	80% (8.712m) :	0.010m 0.071m
6.799m,	-0.020m	70% (7.623m) :	0.012m 0.090m
5.445m,	-0.020m	60% (6.534m) :	0.012m 0.098m
4.058m,	-0.018m	50% (5.445m) :	0.011m 0.096m
2.722m,	-0.014m	40% (4.356m) :	0.009m 0.086m
1.357m,	-0.008m	30% (3.267m) :	0.006m 0.070m
0.000m,	0.000m	20% (2.178m) :	0.003m 0.050m
		10% (1.089m) :	-0.000m 0.024m
		0% (0.000m) :	0.000m 0.000m

Mainsail: 8000122 Ian Newick Val Trimaran squarehead mainsailV1.des



Seam Allowances

Zone:	Split	Radial	Cross
Zone: 1/a	0.032m	0.016m	0.040m
Zone: 1/b	0.032m	0.016m	0.040m
Zone: 2/a	0.032m	0.016m	0.040m
Zone: 2/b	0.032m	0.016m	0.040m
Zone: 3	0.032m	0.016m	0.040m

Edge Excesses

Sail:	Luff	Leech	Foot
	0.000m	0.000m	0.000m

Total Seam Lengths (m)

Horizontal	6.57
Radial/Vertical	110.54
Bi-Radial Split	7.44

Materials

Material	Area (m ²)	Panels
Material 1	32.57	1\1,1\2,1\3,1\4,1\5 1\6,1\7,1\8,1\9,1\10 1\11,1\12,1b\1,1b\2,1b\3 1b\4,1b\5,1b\6,1b\7,1b\8 1b\9,1b\10,1b\11,1b\12,2\1 2\2,2\3,2\4,2\5,2b\1 2b\2,2b\3,2b\4,2b\5,3\1 3\2,3\3,3\4,3\5,3\6