

Mainsail: 8000122 Ian Newick Val Trimaran squarehead mainsail.des

Design Info
=====

Design File:
\\NAS\Engineering files\Queenie-Customer Order\Fareast Sails\2024 Orders\Need to be Confirmed\8000122 Ian\8000

Initial Design Date: 24/1/2024
Boat:

Comments:

Client:

Design Data
=====

Main

Measurements

Luff geodesic: 10.890m
Leech geodesic: 11.150m
Foot geodesic: 4.000m
Head geodesic: 0.940m
Upper width (MUW): 1.350m
Three-quarter width (MTW): 1.976m
Half width (MHW): 2.864m
Quarter width (MQW): 3.521m
Foot median: 10.919m
ORC Mainsail area: 29.340m?
Surface area: 30.107m?
Clew height: 0.373m
Mast rake: 0.450m

Battens

Position	Length	Roach	Angle	Luff	Leech	Full
100.000%	1.145m	0.000m	105.153?	10.250m	11.080m	Full
88.746%	1.605m	0.209m	81.426?	9.502m	9.833m	Full
74.238%	2.185m	0.268m	81.426?	7.944m	8.226m	Full
57.150%	2.752m	0.281m	81.426?	6.111m	6.332m	Full
39.081%	3.247m	0.238m	81.426?	4.177m	4.330m	Full
19.529%	3.675m	0.140m	81.426?	2.086m	2.164m	Full

Reefing Points

1, Luff: 1.323m ; Leech: 1.330m ; Offset: 0.000m ; Number Eyelets: 0
2, Luff: 2.874m ; Leech: 2.886m ; Offset: 0.000m ; Number Eyelets: 0
3, Luff: 4.613m ; Leech: 4.628m ; Offset: 0.000m ; Number Eyelets: 0

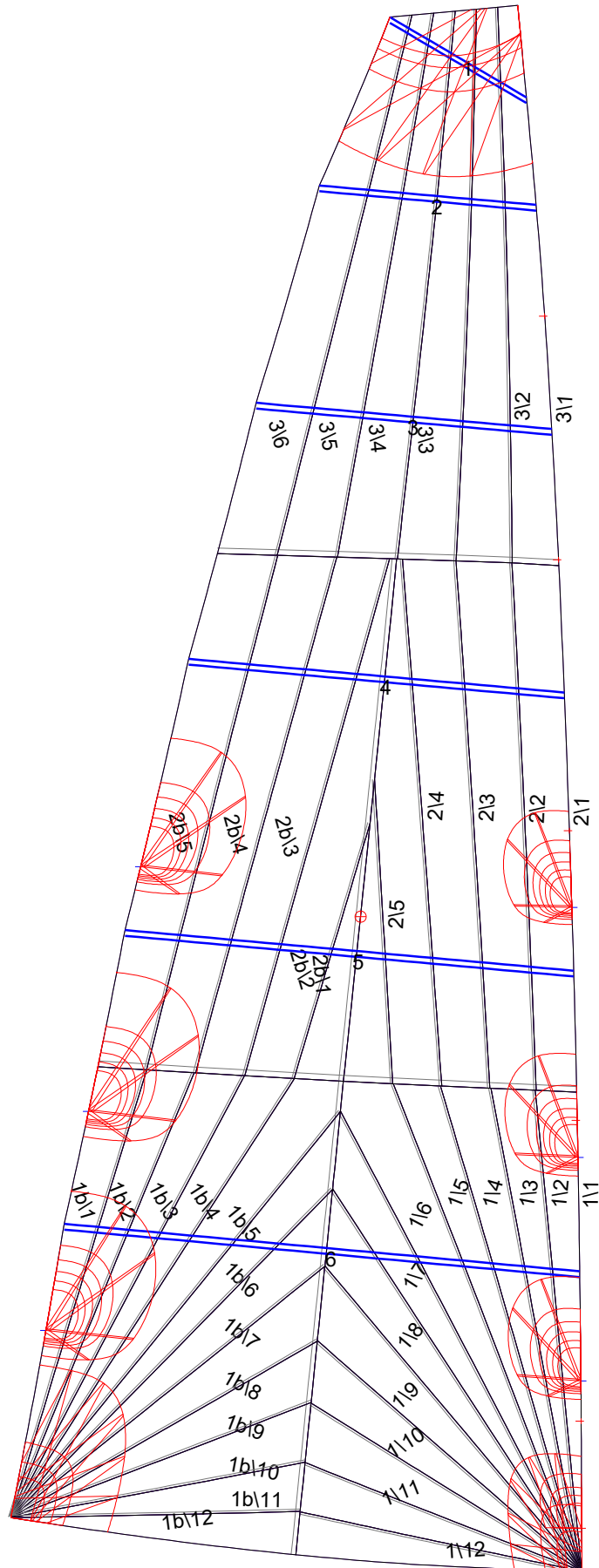
Luff Slides

1, Position: 1.043m
2, Position: 3.131m
3, Position: 5.144m
4, Position: 7.027m
5, Position: 8.723m

Luff Curve

		Fanned Luff (@ 5.00% [0.198m])	Before BSeam
10.888m,	0.000m	100% (10.890m) :	0.000m
9.531m,	-0.069m	90% (9.804m) :	0.040m
8.166m,	-0.111m	80% (8.712m) :	0.071m
6.797m,	-0.126m	70% (7.624m) :	0.086m
5.443m,	-0.125m	60% (6.534m) :	0.091m
4.057m,	-0.112m	50% (5.445m) :	0.089m
2.722m,	-0.086m	40% (4.356m) :	0.082m
1.357m,	-0.048m	30% (3.267m) :	0.069m
0.000m,	0.000m	20% (2.177m) :	0.049m
		10% (1.090m) :	0.025m
		0% (0.000m) :	0.000m

Mainsail: 8000122 Ian Newick Val Trimaran squarehead mainsail.des



Seam Allowances

	Split	Radial	Cross
Zone: 1/a	0.032m	0.016m	0.040m
Zone: 1/b	0.032m	0.016m	0.040m
Zone: 2/a	0.032m	0.016m	0.040m
Zone: 2/b	0.032m	0.016m	0.040m
Zone: 3	0.032m	0.016m	0.040m

Edge Excesses

Sail:	Luff	Leech	Foot
	0.000m	0.000m	0.000m

Total Seam Lengths (m)

Horizontal	5.94
Radial/Vertical	110.77
Bi-Radial Split	7.30

Materials

Material	Area (m ²)	Panels
Material 1	30.15	1\1,1\2,1\3,1\4,1\5 1\6,1\7,1\8,1\9,1\10 1\11,1\12,1b\1,1b\2,1b\3 1b\4,1b\5,1b\6,1b\7,1b\8 1b\9,1b\10,1b\11,1b\12,2\1 2\2,2\3,2\4,2\5,2b\1 2b\2,2b\3,2b\4,2b\5,3\1 3\2,3\3,3\4,3\5,3\6