

# Genoa: 8000121 Andre-2 Jeanneau Sun Odyssey 44i furlgenV1.des

Design Info  
=====

Design File:  
\\NAS\Engineering files\Queenie-Customer Order\Fareast Sails\2024 Orders\Need to be Confirmed\8000121 Andre J

Initial Design Date: 22/2/2024  
Boat:  
Jeanneau Sun Odyssey 44i  
Client:

Comments:

Design Data  
=====

## Genoa

### Measurements

Luff geodesic: 16.038m  
Leech geodesic: 15.242m  
Foot geodesic: 6.108m  
Headboard width: 0.045m  
Luff perpendicular (HLP): 5.812m  
Upper width (HUW): 0.630m  
Three-quarter width (HTW): 1.250m  
Half width (HHW): 2.636m  
Quarter width (HQW): 4.178m  
Foot median: 15.507m  
ORC Headsail area: 44.304m?  
IRC Headsail area: 44.179m?  
Surface area: 44.359m?  
Forestay height: 16.540m  
J: 4.650m

### Reefing Points

1, Luff: 0.000m ; Leech: 0.000m ; Offset: 0.000m ; Number Eyelets: 0  
2, Luff: 0.000m ; Leech: 0.000m ; Offset: 0.000m ; Number Eyelets: 0  
3, Luff: 0.000m ; Leech: 0.000m ; Offset: 0.000m ; Number Eyelets: 0

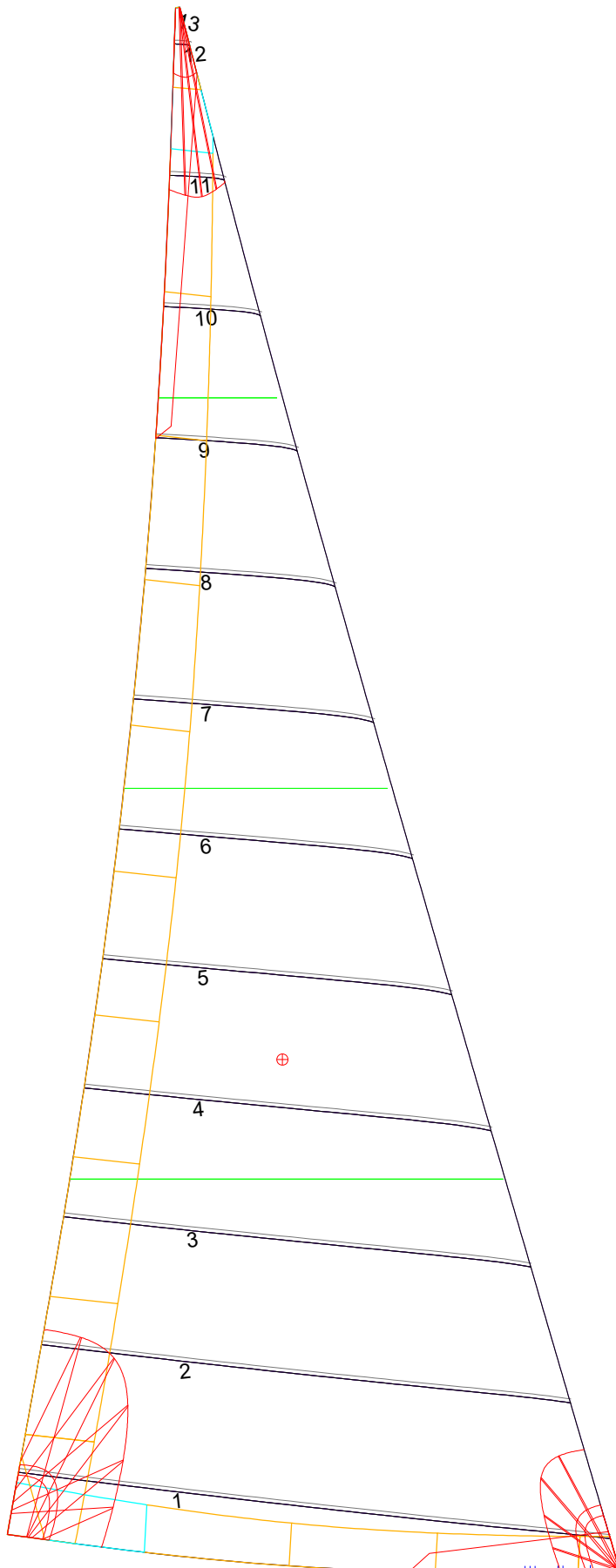
### Draft Stripes

1, Luff: 4.026m ; Leech: 3.579m ;  
2, Luff: 8.050m ; Leech: 7.474m ;  
3, Luff: 12.060m ; Leech: 11.332m ;

### Luff Curve

|          |        | Fanned Luff (@ 5.00% [0.302m]) | Before BSeam |
|----------|--------|--------------------------------|--------------|
| 16.035m, | 0.000m | 100% (16.035m) :               | -0.000m      |
| 14.702m, | 0.054m | 90% (14.431m) :                | -0.017m      |
| 13.229m, | 0.098m | 80% (12.830m) :                | -0.023m      |
| 11.932m, | 0.121m | 70% (11.225m) :                | -0.017m      |
| 10.423m, | 0.130m | 60% (9.622m) :                 | -0.004m      |
| 7.980m,  | 0.114m | 50% (8.018m) :                 | 0.011m       |
| 5.211m,  | 0.077m | 40% (6.415m) :                 | 0.022m       |
| 2.710m,  | 0.039m | 30% (4.811m) :                 | 0.028m       |
| 0.000m,  | 0.000m | 20% (3.208m) :                 | 0.027m       |
|          |        | 10% (1.602m) :                 | 0.019m       |
|          |        | 0% (0.000m) :                  | 0.000m       |

# Genoa: 8000121 Andre-2 Jeanneau Sun Odyssey 44i furlgenV1.des



## Seam Allowances

| Zone:   | Split  | Radial | Cross  |
|---------|--------|--------|--------|
| Zone: 1 | 0.038m | 0.038m | 0.038m |
| Cover 1 | 0.025m | 0.025m | 0.025m |
| Cover 2 | 0.025m | 0.025m | 0.025m |
| Cover 3 | 0.000m | 0.000m | 0.000m |
| Cover 4 | 0.000m | 0.000m | 0.000m |

## Edge Excesses

| Sail:   | Luff   | Leech  | Foot   |
|---------|--------|--------|--------|
| Sail:   | 0.000m | 0.000m | 0.000m |
| Cover 0 | 0.070m | 0.100m | 0.070m |
| Cover 1 | 0.070m | 0.070m | 0.100m |
| Cover 2 | 0.000m | 0.070m | 0.070m |
| Cover 3 | 0.000m | 0.070m | 0.070m |

## Total Seam Lengths (m)

|                 |       |
|-----------------|-------|
| Horizontal      | 34.67 |
| Radial/Vertical | 0.00  |
| Bi-Radial Split | 0.00  |

## Materials

| Material   | Area (m <sup>2</sup> ) | Panels                              |
|------------|------------------------|-------------------------------------|
| Material 1 | 44.48                  | 1,2,3,4,5<br>6,7,8,9,10<br>11,12,13 |