

# Mainsail: 8000118 Tom-1 Landing School 30 SquaretopmainV3.des

Design Info  
=====

Design File:  
\\NAS\Engineering files\Queenie-Customer Order\Fareast Sails\2024 Orders\Need to be Confirmed\8000118 Tom\8000

Initial Design Date: 20/2/2024  
Boat:  
Landing School 30  
Client:

Comments:

Design Data  
=====

Main

Measurements

Luff geodesic: 10.007m  
Leech geodesic: 10.363m  
Foot geodesic: 4.100m  
Head geodesic: 1.448m  
Upper width (MUW): 1.563m  
Three-quarter width (MTW): 2.221m  
Half width (MHW): 3.003m  
Quarter width (MQW): 3.589m  
Foot median: 10.095m  
ORC Mainsail area: 28.645m?  
Surface area: 29.740m?  
Clew height: 0.449m  
Mast rake: 0.305m

Battens

Position	Length	Roach	Angle	Luff	Leech	Full
100.000%	1.780m	0.000m	108.137?	9.000m	10.279m	Full
88.198%	2.036m	0.188m	82.385?	8.618m	9.066m	Full
72.893%	2.537m	0.232m	82.385?	7.119m	7.493m	Full
56.286%	2.967m	0.201m	82.385?	5.495m	5.786m	Full
39.515%	1.500m	0.150m	82.385?	3.856m	4.062m	
21.603%	1.500m	0.075m	82.385?	2.107m	2.221m	

Reefing Points

1, Luff: 1.218m ; Leech: 1.225m ; Offset: 0.000m ; Number Eyelets: 3  
2, Luff: 2.646m ; Leech: 2.656m ; Offset: 0.000m ; Number Eyelets: 3  
3, Luff: 4.495m ; Leech: 4.505m ; Offset: 0.000m ; Number Eyelets: 0

Draft Stripes

1, Luff: 3.295m ; Leech: 2.928m ;  
2, Luff: 6.597m ; Leech: 6.316m ;

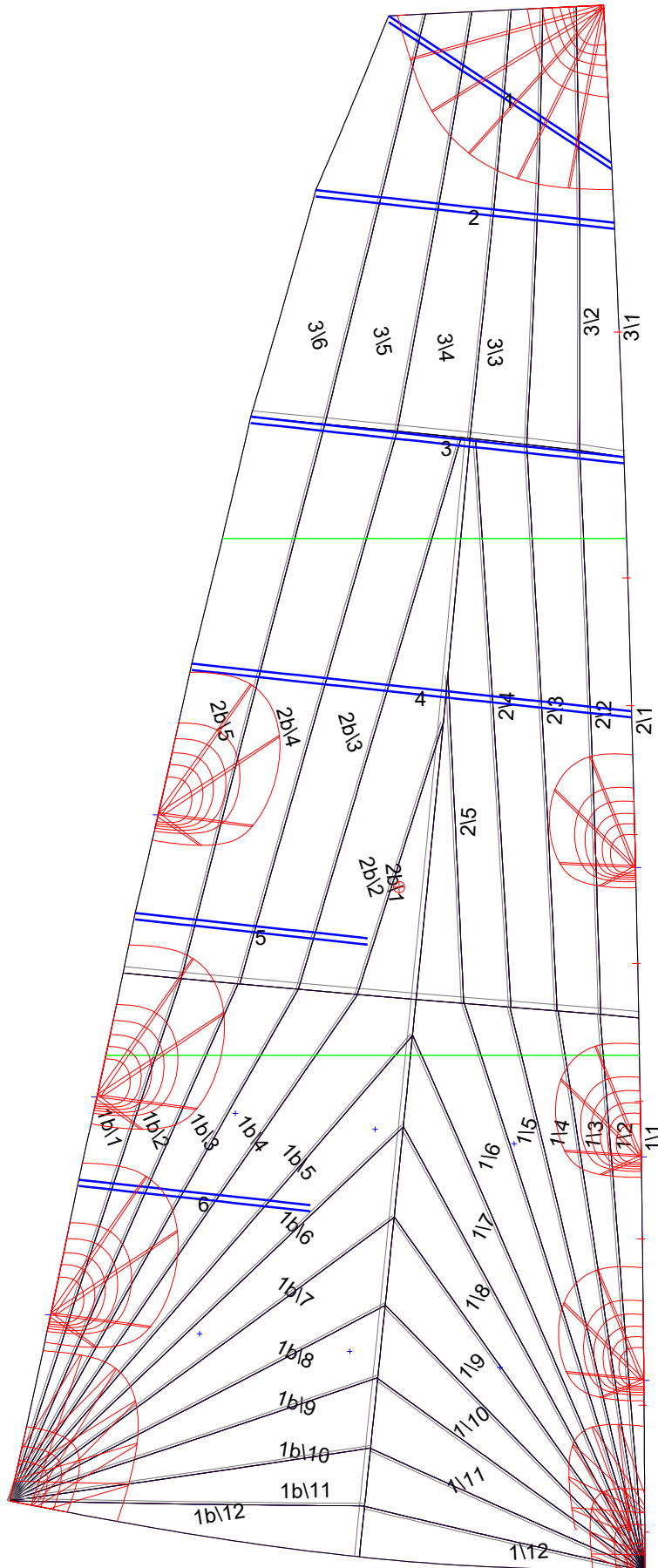
Luff Slides

1, Position: 1.061m  
2, Position: 2.121m  
3, Position: 3.001m  
4, Position: 3.881m  
5, Position: 4.705m  
6, Position: 5.530m  
7, Position: 6.346m  
8, Position: 7.916m

Luff Curve

		Fanned Luff (@ 5.00% [0.203m])	Before BSeam
10.006m,	0.000m	100% (10.007m) :	0.000m -0.000m
8.759m,	-0.029m	90% (9.007m) :	0.016m 0.050m
7.505m,	-0.049m	80% (8.005m) :	0.030m 0.089m
6.247m,	-0.058m	70% (7.005m) :	0.038m 0.112m
5.003m,	-0.059m	60% (6.004m) :	0.041m 0.122m
3.728m,	-0.055m	50% (5.003m) :	0.041m 0.122m
2.502m,	-0.044m	40% (4.003m) :	0.038m 0.114m
1.247m,	-0.025m	30% (3.002m) :	0.033m 0.097m
0.000m,	0.000m	20% (2.001m) :	0.024m 0.072m
		10% (1.001m) :	0.011m 0.037m
		0% (0.000m) :	0.000m 0.000m

# Mainsail: 8000118 Tom-1 Landing School 30 SquaretopmainV3.des



## Seam Allowances

Zone:	Split	Radial	Cross
Zone: 1/a	0.032m	0.016m	0.040m
Zone: 1/b	0.032m	0.016m	0.040m
Zone: 2/a	0.032m	0.016m	0.040m
Zone: 2/b	0.032m	0.016m	0.040m
Zone: 3	0.032m	0.016m	0.040m

## Edge Excesses

Sail:	Luff	Leech	Foot
	0.000m	0.000m	0.000m

## Total Seam Lengths (m)

Horizontal	5.96
Radial/Vertical	108.46
Bi-Radial Split	7.54

## Materials

Material	Area (m <sup>2</sup> )	Panels
Material 1	29.78	1\1,1\2,1\3,1\4,1\5 1\6,1\7,1\8,1\9,1\10 1\11,1\12,1b\1,1b\2,1b\3 1b\4,1b\5,1b\6,1b\7,1b\8 1b\9,1b\10,1b\11,1b\12,2\1 2\2,2\3,2\4,2\5,2b\1 2b\2,2b\3,2b\4,2b\5,3\1 3\2,3\3,3\4,3\5,3\6