

Mainsail: 8000118 Tom-1 Landing School 30 Squaretopmain.des

Design Info
=====

Design File:
\\NAS\Engineering files\Queenie-Customer Order\Fareast Sails\2024 Orders\Need to be Confirmed\8000118 Tom\8000118 Tom-1 Landing School 30 Squaretopmain.des

Initial Design Date: 23/1/2024
Boat:
Landing School 30
Client:

Comments:

Design Data
=====

Main

Measurements

Luff geodesic: 10.007m
Leech geodesic: 10.516m
Foot geodesic: 4.100m
Head geodesic: 1.448m
Upper width (MUW): 1.576m
Three-quarter width (MTW): 2.231m
Half width (MHW): 3.013m
Quarter width (MQW): 3.600m
Foot median: 10.174m
ORC Mainsail area: 28.732m?
Surface area: 29.961m?
Clew height: 0.289m
Mast rake: 0.305m

Battens

Position	Length	Roach	Angle	Luff	Leech	Full
100.000%	1.776m	0.000m	108.137?	9.006m	10.433m	Full
88.198%	2.028m	0.188m	80.302?	8.669m	9.202m	Full
72.893%	2.533m	0.232m	80.302?	7.162m	7.605m	Full
56.286%	1.230m	0.201m	80.302?	5.529m	5.872m	
39.515%	1.230m	0.150m	80.302?	3.880m	4.123m	
21.603%	1.230m	0.075m	80.302?	2.120m	2.254m	

Reefing Points

1, Luff: 1.219m ; Leech: 1.236m ; Offset: 0.000m ; Number Eyelets: 3
2, Luff: 2.648m ; Leech: 2.680m ; Offset: 0.000m ; Number Eyelets: 3

Draft Stripes

1, Luff: 3.297m ; Leech: 3.092m ;
2, Luff: 6.599m ; Leech: 6.479m ;

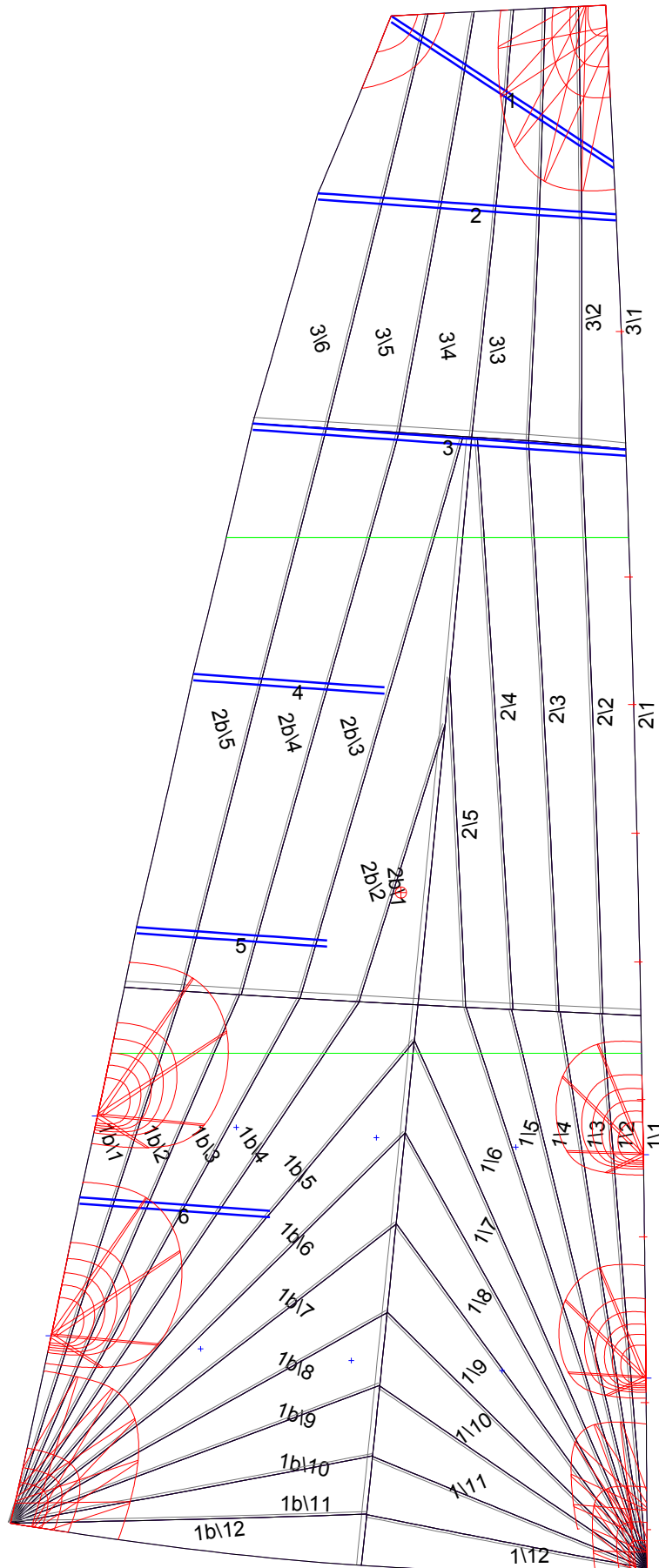
Luff Slides

1, Position: 1.061m
2, Position: 2.121m
3, Position: 3.001m
4, Position: 3.881m
5, Position: 4.705m
6, Position: 5.530m
7, Position: 6.346m
8, Position: 7.916m

Luff Curve

		Fanned Luff (@ 5.00% [0.204m])	Before BSeam
10.006m,	0.000m	100% (10.007m) :	0.000m
8.759m,	-0.029m	90% (9.007m) :	0.015m
7.505m,	-0.049m	80% (8.005m) :	0.029m
6.247m,	-0.058m	70% (7.005m) :	0.037m
5.003m,	-0.059m	60% (6.004m) :	0.040m
3.728m,	-0.055m	50% (5.003m) :	0.040m
2.502m,	-0.044m	40% (4.003m) :	0.037m
1.247m,	-0.025m	30% (3.002m) :	0.032m
0.000m,	0.000m	20% (2.001m) :	0.023m
		10% (1.001m) :	0.011m
		0% (0.000m) :	0.000m

Mainsail: 8000118 Tom-1 Landing School 30 Squaretopmain.des



Seam Allowances			
	Split	Radial	Cross
Zone: 1/a	0.032m	0.016m	0.040m
Zone: 1/b	0.032m	0.016m	0.040m
Zone: 2/a	0.032m	0.016m	0.040m
Zone: 2/b	0.032m	0.016m	0.040m
Zone: 3	0.032m	0.016m	0.040m

Edge Excesses			
Sail:	Luff	Leech	Foot
	0.000m	0.000m	0.000m

Total Seam Lengths (m)

Horizontal	5.96
Radial/Vertical	109.19
Bi-Radial Split	7.62

Materials

Material	Area (m ²)	Panels
Material 1	30.00	1\1,1\2,1\3,1\4,1\5 1\6,1\7,1\8,1\9,1\10 1\11,1\12,1b\1,1b\2,1b\3 1b\4,1b\5,1b\6,1b\7,1b\8 1b\9,1b\10,1b\11,1b\12,2\1 2\2,2\3,2\4,2\5,2b\1 2b\2,2b\3,2b\4,2b\5,3\1 3\2,3\3,3\4,3\5,3\6