

Mainsail: 7001229 Taso-1 Beneteau Oceanis 37 fullbattmainV1.des

Design Info
=====

Design File:
\\NAS\Engineering files\Queenie-Customer Order\Fareast Sails\2024 Orders\Need to be Confirmed\7001229 Taso Ber

Initial Design Date: 20/6/2024
Boat:
Beneteau Oceanis 37
Client:

Comments:

Design Data
=====

Main

Measurements

Luff geodesic: 13.117m
Leech geodesic: 13.600m
Foot geodesic: 3.860m
Head geodesic: 0.135m
Upper width (MUW): 0.797m
Three-quarter width (MTW): 1.435m
Half width (MHW): 2.452m
Quarter width (MQW): 3.239m
Foot median: 13.343m
ORC Mainsail area: 29.932m?
Surface area: 30.591m?
Clew height: 0.100m
Mast rake: 0.000m

Battens

Position	Length	Roach	Angle	Luff	Leech	Full
80.000%	1.247m	0.265m	75.102?	10.495m	10.858m	Full
60.000%	2.130m	0.344m	75.102?	7.878m	8.143m	Full
40.000%	2.815m	0.278m	75.102?	5.262m	5.429m	Full
20.000%	3.386m	0.157m	75.102?	2.646m	2.714m	Full

Reefing Points

1, Luff: 1.731m ; Leech: 1.770m ; Offset: 0.000m ; Number Eyelets: 3
2, Luff: 3.475m ; Leech: 3.553m ; Offset: 0.000m ; Number Eyelets: 3

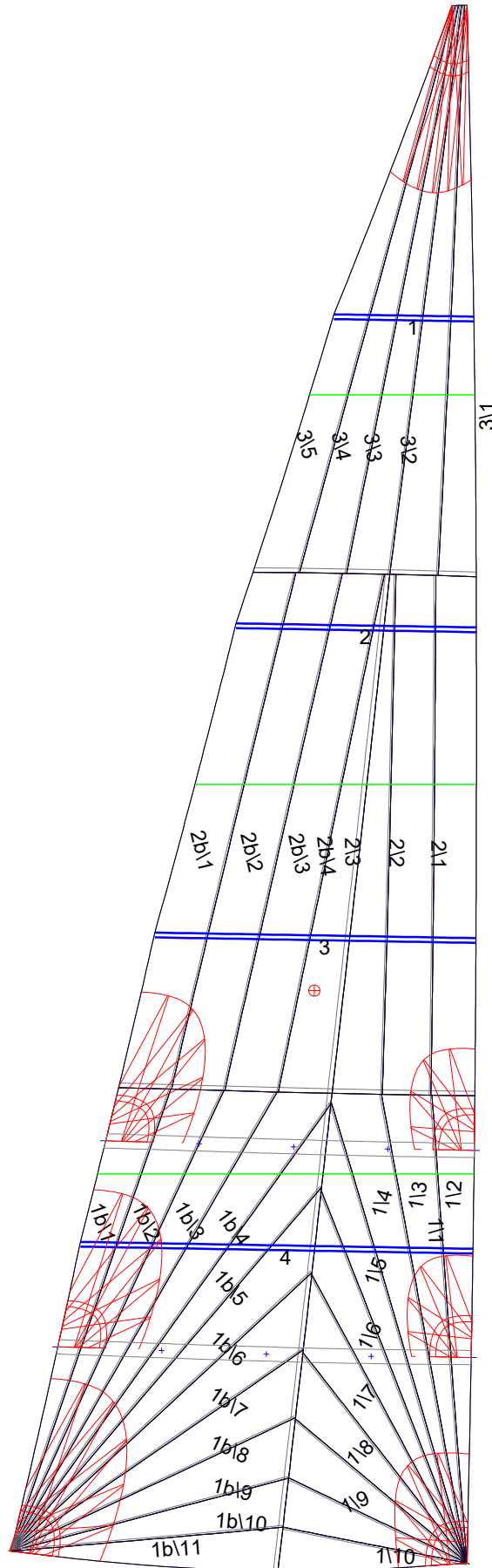
Draft Stripes

1, Luff: 3.278m ; Leech: 3.266m ;
2, Luff: 6.557m ; Leech: 6.647m ;
3, Luff: 9.836m ; Leech: 10.059m ;

Luff Curve

		Fanned Luff (@ 5.00% [0.192m])	Before BSeam
13.116m,	0.000m	100% (13.117m) :	0.000m
11.482m,	-0.038m	90% (11.806m) :	0.024m
9.837m,	-0.066m	80% (10.494m) :	0.043m
8.189m,	-0.077m	70% (9.182m) :	0.054m
6.558m,	-0.079m	60% (7.870m) :	0.059m
4.887m,	-0.073m	50% (6.559m) :	0.059m
3.279m,	-0.058m	40% (5.247m) :	0.055m
1.634m,	-0.033m	30% (3.935m) :	0.047m
0.000m,	0.000m	20% (2.623m) :	0.035m
		10% (1.312m) :	0.018m
		0% (0.000m) :	0.000m

Mainsail: 7001229 Taso-1 Beneteau Oceanis 37 fullbattmainV1.des



Seam Allowances

	Split	Radial	Cross
Zone: 1/a	0.038m	0.015m	0.038m
Zone: 1/b	0.038m	0.015m	0.038m
Zone: 2/a	0.038m	0.015m	0.038m
Zone: 2/b	0.038m	0.015m	0.038m
Zone: 3	0.038m	0.015m	0.038m

Edge Excesses

Sail:	Luff	Leech	Foot
	0.000m	0.000m	0.000m

Total Seam Lengths (m)

Horizontal	5.08
Radial/Vertical	103.23
Bi-Radial Split	8.70

Materials

Material	Area (m ²)	Panels
Material 1	30.60	1\1,1\2,1\3,1\4,1\5 1\6,1\7,1\8,1\9,1\10 1b\1,1b\2,1b\3,1b\4,1b\5 1b\6,1b\7,1b\8,1b\9,1b\10 1b\11,2\1,2\2,2\3,2b\4 2b\3,2b\2,2b\1,3\1,3\2 3\3,3\4,3\5