

Genoa: 7001225 Darren-2 Alajuela 38 staysil.des

Design Info
=====

Design File:
\\NAS\Engineering files\Queenie-Customer Order\Fareast Sails\2024 Orders\Need to be Confirmed\7001225 Darren A

Initial Design Date: 19/2/2024
Boat:
Alajuela 38
Client:

Comments:

Design Data
=====

Genoa

Measurements

Luff geodesic:	10.540m
Leech geodesic:	7.959m
Foot geodesic:	4.862m
Headboard width:	0.035m
Luff perpendicular (HLP):	3.553m
Upper width (HUW):	0.407m
Three-quarter width (HTW):	0.796m
Half width (HHW):	1.637m
Quarter width (HQW):	2.567m
Foot median:	9.120m
ORC Headsail area:	17.979m?
IRC Headsail area:	17.944m?
Surface area:	18.267m?
Forestay height:	10.780m
J:	3.740m

Draft Stripes

1, Luff: 5.289m ; Leech: 2.938m ;
2, Luff: 7.924m ; Leech: 5.428m ;

Luff Curve

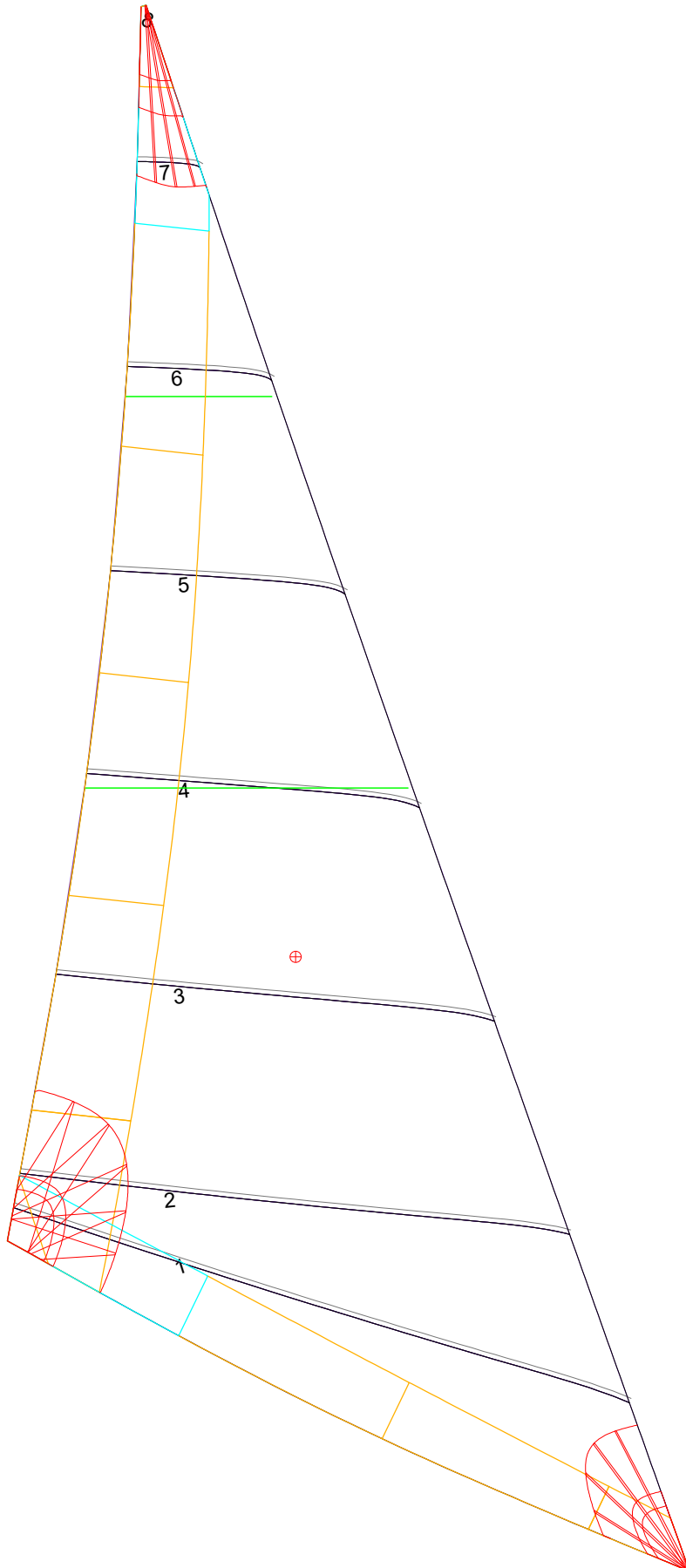
10.538m,	0.000m
9.663m,	0.027m
8.694m,	0.048m
7.842m,	0.059m
6.850m,	0.063m
5.244m,	0.055m
3.425m,	0.038m
1.781m,	0.019m
0.000m,	0.000m

Fanned Luff (@ 5.00% [0.217m])

100% (10.539m) :	0.000m	-0.000m
90% (9.488m) :	-0.034m	0.005m
80% (8.430m) :	-0.060m	0.013m
70% (7.378m) :	-0.074m	0.026m
60% (6.323m) :	-0.076m	0.040m
50% (5.270m) :	-0.070m	0.051m
40% (4.216m) :	-0.059m	0.057m
30% (3.162m) :	-0.046m	0.055m
20% (2.108m) :	-0.031m	0.047m
10% (1.053m) :	-0.016m	0.030m
0% (0.000m) :	0.000m	0.000m

Before BSeam

Genoa: 7001225 Darren-2 Alajuela 38 staysil.des



Seam Allowances

Zone:	Split	Radial	Cross
Zone: 1	0.030m	0.030m	0.030m
Cover 1	0.025m	0.025m	0.025m
Cover 2	0.025m	0.025m	0.025m
Cover 3	0.000m	0.000m	0.000m
Cover 4	0.000m	0.000m	0.000m

Edge Excesses

Sail:	Luff	Leech	Foot
Sail:	0.000m	0.000m	0.000m
Cover 0	0.070m	0.100m	0.070m
Cover 1	0.070m	0.070m	0.100m
Cover 2	0.000m	0.070m	0.070m
Cover 3	0.000m	0.070m	0.070m

Total Seam Lengths (m)

Horizontal	16.12
Radial/Vertical	0.00
Bi-Radial Split	0.00

Materials

Material	Area (m ²)	Panels
Material 1	18.33	1,2,3,4,5 6,7,8