

Mainsail: 7001220 Alwyn Beneteau393 fullbattmain.des

Design Info
=====

Design File:
\\NAS\Engineering files\Queenie-Customer Order\Fareast Sails\2024 Orders\Need to be Confirmed\7001220 Alwyn Be

Initial Design Date: 16/5/2024
Boat:
Beneteau393
Client:

Comments:

Design Data
=====

Main

Measurements

Luff geodesic: 11.720m
Leech geodesic: 12.462m
Foot geodesic: 4.415m
Head geodesic: 0.073m
Upper width (MUW): 0.838m
Three-quarter width (MTW): 1.552m
Half width (MHW): 2.735m
Quarter width (MQW): 3.670m
Foot median: 12.032m
ORC Mainsail area: 29.923m?
Surface area: 30.829m?
Clew height: 0.100m
Mast rake: 0.000m

Battens

Position	Length	Roach	Angle	Luff	Leech	Full
82.000%	1.246m	0.300m	71.110?	9.606m	10.176m	Full
62.000%	2.272m	0.394m	71.110?	7.261m	7.694m	Full
42.000%	3.109m	0.347m	71.110?	4.917m	5.212m	Full
22.000%	3.786m	0.201m	71.110?	2.573m	2.730m	Full

Reefing Points

- 1, Luff: 1.547m ; Leech: 1.611m ; Offset: 0.000m ; Number Eyelets: 3
- 2, Luff: 3.222m ; Leech: 3.353m ; Offset: 0.000m ; Number Eyelets: 3
- 3, Luff: 5.273m ; Leech: 5.490m ; Offset: 0.000m ; Number Eyelets: 2

Draft Stripes

- 1, Luff: 2.929m ; Leech: 2.948m ;
- 2, Luff: 5.859m ; Leech: 6.033m ;
- 3, Luff: 8.789m ; Leech: 9.163m ;

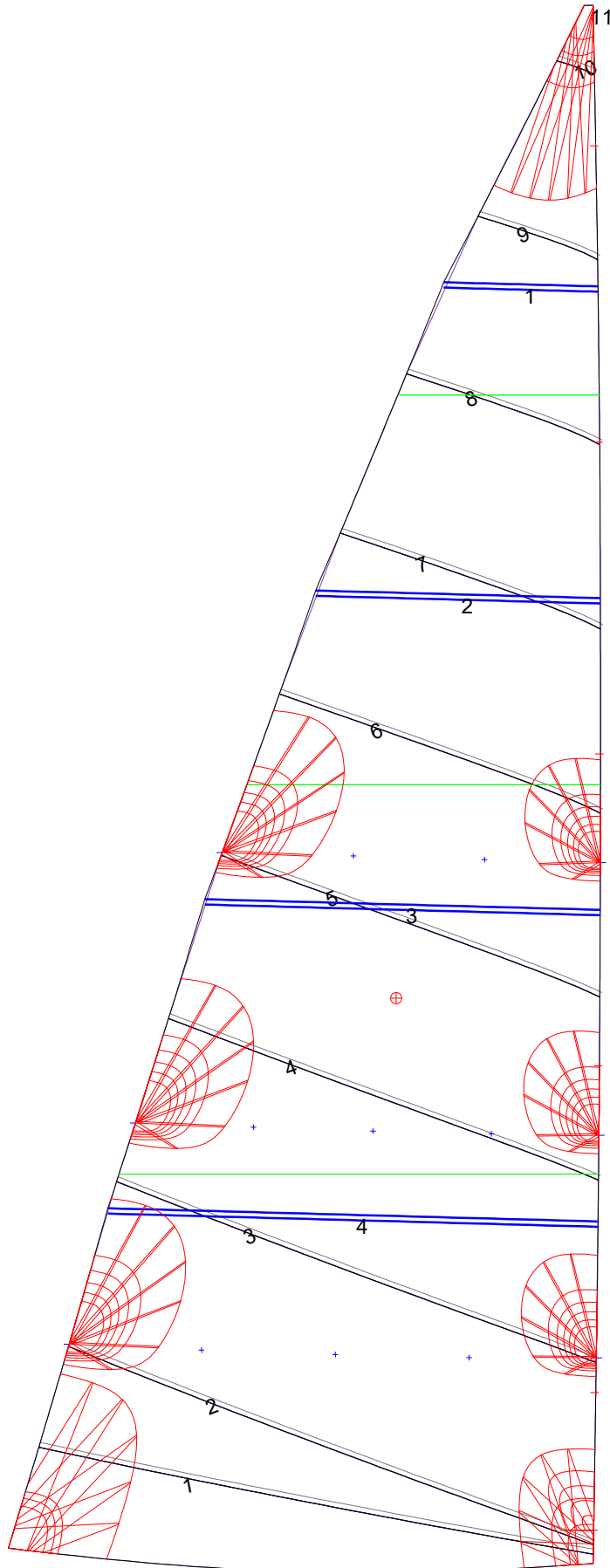
Luff Slides

- 1, Position: 1.286m
- 2, Position: 3.745m
- 3, Position: 6.089m
- 4, Position: 8.433m
- 5, Position: 10.663m

Luff Curve

		Fanned Luff (@ 5.00% [0.220m])	Before BSeam
11.720m,	0.000m	100% (11.720m) :	0.000m
10.259m,	-0.027m	90% (10.548m) :	0.049m
8.790m,	-0.046m	80% (9.376m) :	0.091m
7.317m,	-0.055m	70% (8.204m) :	0.119m
5.860m,	-0.056m	60% (7.032m) :	0.135m
4.367m,	-0.052m	50% (5.860m) :	0.139m
2.930m,	-0.041m	40% (4.688m) :	0.133m
1.460m,	-0.023m	30% (3.516m) :	0.114m
0.000m,	0.000m	20% (2.344m) :	0.084m
		10% (1.172m) :	0.042m
		0% (0.000m) :	0.000m

Mainsail: 7001220 Alwyn Beneteau393 fullbattmain.des



Seam Allowances			
Zone: 1	Split	Radial	Cross
	0.000m	0.000m	0.038m

Edge Excesses			
Sail:	Luff	Leech	Foot
	0.000m	0.000m	0.000m

Total Seam Lengths (m)

Horizontal	27.08
Radial/Vertical	0.00
Bi-Radial Split	0.00

Materials

Material	Area (m ²)	Panels
Material 1	30.81	1,2,3,4,5 6,7,8,9,10 11