

# Mainsail: 7001219 James Fullbatt MainsailV1.des

Design Info  
=====

Design File:  
\\NAS\Engineering files\Queenie-Customer Order\Fareast Sails\2023 Order\Need to be Confirmed\7001219 James\7001219 James Fullbatt MainsailV1.des

Initial Design Date: 22/12/2023  
Boat:

Comments:  
Tack angle 88.5 degree

Client:

Design Data  
=====

Main

Measurements

Luff geodesic: 13.051m  
 Leech geodesic: 13.529m  
 Foot geodesic: 3.822m  
 Head geodesic: 0.115m  
 Upper width (MUW): 0.687m  
 Three-quarter width (MTW): 1.246m  
 Half width (MHW): 2.239m  
 Quarter width (MQW): 3.096m  
 Foot median: 13.196m  
 ORC Mainsail area: 27.900m?  
 Surface area: 28.107m?  
 Clew height: 0.100m  
 Mast rake: 0.000m

Battens

Position	Length	Roach	Angle	Luff	Leech	Full
80.000%	1.053m	0.115m	75.561?	10.435m	10.799m	Full
60.000%	1.880m	0.150m	75.561?	7.826m	8.099m	Full
40.000%	2.614m	0.132m	75.561?	5.217m	5.400m	Full
20.000%	3.255m	0.076m	75.561?	2.608m	2.700m	Full

Luff Slides

- 1, Position: 0.869m
- 2, Position: 1.739m
- 3, Position: 3.477m
- 4, Position: 4.347m
- 5, Position: 6.086m
- 6, Position: 6.956m
- 7, Position: 8.696m
- 8, Position: 9.565m
- 9, Position: 11.307m
- 10, Position: 12.179m

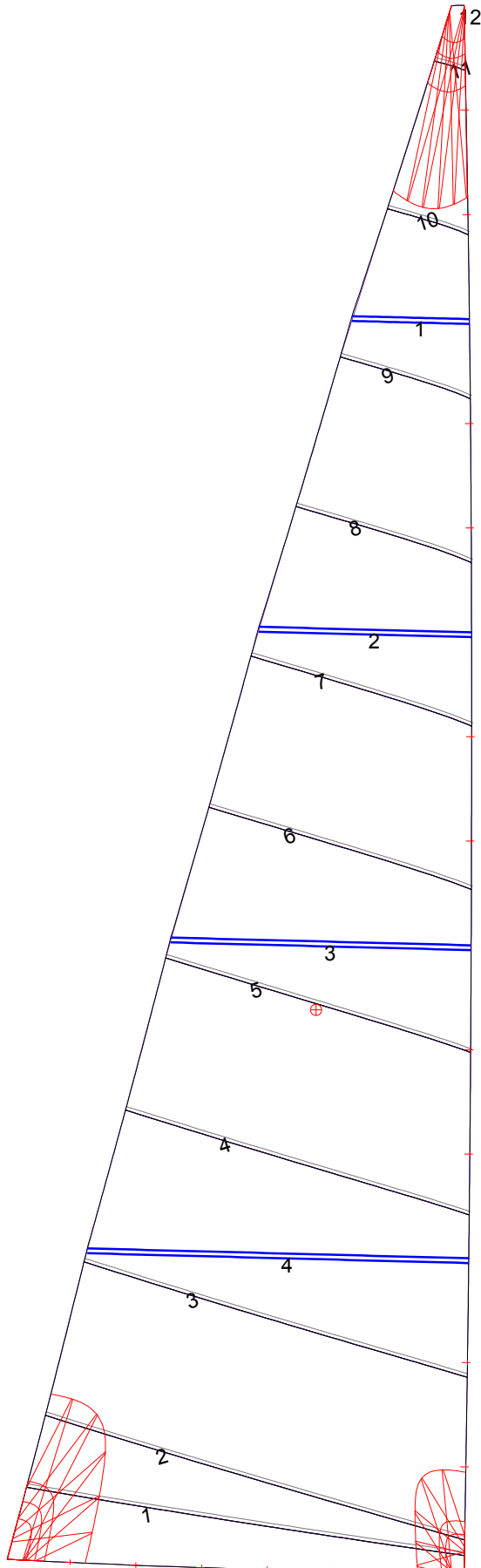
Foot Slides

- 1, Position: 0.550m
- 2, Position: 1.099m
- 3, Position: 1.647m
- 4, Position: 2.195m
- 5, Position: 2.744m
- 6, Position: 3.292m

Luff Curve

Luff Curve	Fanned Luff (@ 5.00% [0.190m])	Before BSeam
13.050m, 0.000m	100% (13.051m) :	0.000m -0.000m
11.424m, -0.030m	90% (11.746m) :	0.019m 0.045m
9.788m, -0.052m	80% (10.440m) :	0.035m 0.083m
8.147m, -0.061m	70% (9.136m) :	0.044m 0.109m
6.525m, -0.062m	60% (7.830m) :	0.047m 0.124m
4.863m, -0.057m	50% (6.525m) :	0.047m 0.128m
3.263m, -0.046m	40% (5.220m) :	0.044m 0.123m
1.626m, -0.026m	30% (3.915m) :	0.038m 0.105m
0.000m, 0.000m	20% (2.610m) :	0.027m 0.076m
	10% (1.305m) :	0.013m 0.037m
	0% (0.000m) :	0.000m 0.000m

# Mainsail: 7001219 James Fullbatt MainsailV1.des



Seam Allowances			
Zone: 1	Split	Radial	Cross
	0.030m	0.030m	0.030m

Edge Excesses			
Sail:	Luff	Leech	Foot
	0.000m	0.000m	0.000m

Total Seam Lengths (m)

Horizontal	24.93
Radial/Vertical	0.00
Bi-Radial Split	0.00

Materials

Material	Area (m <sup>2</sup> )	Panels
Material 1	28.14	1,2,3,4,5 6,7,8,9,10 11,12