

Mainsail: 7001219 James Fullbatt Mainsail.des

Design Info
=====

Design File:
\\NAS\Engineering files\Queenie-Customer Order\Fareast Sails\2023 Order\Need to be Confirmed\7001219 James\7001219 James Fullbatt Mainsail.des

Initial Design Date: 22/12/2023
Boat:

Comments:
Tack angle 88.5 degree

Client:

Design Data
=====

Main

Measurements

Luff geodesic: 42.822Ft
 Leech geodesic: 44.416Ft
 Foot geodesic: 12.530Ft
 Head geodesic: 0.377Ft
 Upper width (MUW): 2.528Ft
 Three-quarter width (MTW): 4.583Ft
 Half width (MHW): 7.930Ft
 Quarter width (MQW): 10.530Ft
 Foot median: 43.309Ft
 ORC Mainsail area: 315.998Ft?
 Surface area: 320.483Ft?
 Clew height: 0.328Ft
 Mast rake: 0.000Ft

Battens

Position	Length	Roach	Angle	Luff	Leech	Full
80.000%	3.966Ft	0.861Ft	75.584?	34.240Ft	35.432Ft	Full
60.000%	6.833Ft	1.118Ft	75.584?	25.677Ft	26.574Ft	Full
40.000%	9.159Ft	0.985Ft	75.584?	17.116Ft	17.716Ft	Full
20.000%	11.006Ft	0.569Ft	75.584?	8.556Ft	8.858Ft	Full

Draft Stripes

1, Luff: 14.127Ft ; Leech: 14.194Ft ;
 2, Luff: 28.257Ft ; Leech: 28.829Ft ;

Luff Slides

1, Position: 2.852Ft
 2, Position: 5.705Ft
 3, Position: 11.410Ft
 4, Position: 14.263Ft
 5, Position: 19.970Ft
 6, Position: 22.824Ft
 7, Position: 28.532Ft
 8, Position: 31.386Ft
 9, Position: 37.101Ft
 10, Position: 39.962Ft

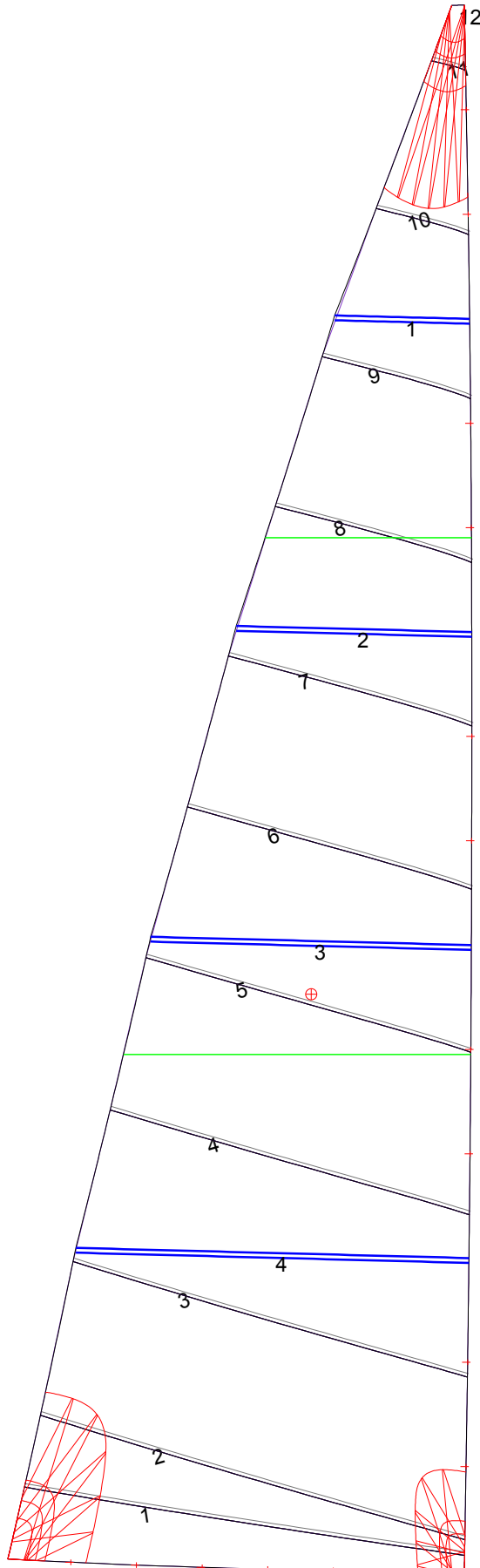
Foot Slides

1, Position: 1.804Ft
 2, Position: 3.602Ft
 3, Position: 5.399Ft
 4, Position: 7.196Ft
 5, Position: 8.994Ft
 6, Position: 10.791Ft

Luff Curve

Luff Curve		Fanned Luff (@ 5.00% [0.624Ft])	Before BSeam
42.821Ft,	0.000Ft	100% (42.822Ft) :	0.000Ft
37.485Ft,	-0.099Ft	90% (38.541Ft) :	0.157Ft
32.115Ft,	-0.170Ft	80% (34.258Ft) :	0.291Ft
26.733Ft,	-0.200Ft	70% (29.976Ft) :	0.379Ft
21.410Ft,	-0.204Ft	60% (25.693Ft) :	0.426Ft
15.955Ft,	-0.188Ft	50% (21.411Ft) :	0.435Ft
10.705Ft,	-0.151Ft	40% (17.129Ft) :	0.413Ft
5.336Ft,	-0.085Ft	30% (12.847Ft) :	0.351Ft
0.000Ft,	0.000Ft	20% (8.564Ft) :	0.252Ft
		10% (4.283Ft) :	0.122Ft
		0% (0.000Ft) :	0.000Ft

Mainsail: 7001219 James Fullbatt Mainsail.des



Seam Allowances			
Zone: 1	Split	Radial	Cross
	0.098Ft	0.098Ft	0.098Ft

Edge Excesses			
Sail:	Luff	Leech	Foot
	0.000Ft	0.000Ft	0.000Ft

Total Seam Lengths (Ft)

Horizontal	86.03
Radial/Vertical	0.00
Bi-Radial Split	0.00

Materials

Material	Area (Ft ²)	Panels
Material 1	320.73	1,2,3,4,5 6,7,8,9,10 11,12