

Mainsail: 7001216 Guillermo-1 Beneteau 45F Fullbatt Mainsail.des

Design Info
=====

Design File:
\\NAS\Engineering files\Queenie-Customer Order\Fareast Sails\2023 Order\Need to be Confirmed\7001216 Guillermo

Initial Design Date: 21/12/2023
Boat:

Comments:

Client:

Design Data
=====

Main

Measurements

Luff geodesic:	15.580m
Leech geodesic:	16.310m
Foot geodesic:	5.080m
Head geodesic:	0.160m
Upper width (MUW):	1.022m
Three-quarter width (MTW):	1.851m
Half width (MHW):	3.221m
Quarter width (MQW):	4.272m
Foot median:	15.909m
ORC Mainsail area:	46.627m?
Surface area:	47.786m?
Clew height:	0.100m
Mast rake:	0.000m

Battens

Position	Length	Roach	Angle	Luff	Leech	Full
82.000%	1.480m	0.332m	73.895?	12.768m	13.329m	Full
62.000%	2.690m	0.472m	73.895?	9.652m	10.078m	Full
42.000%	3.631m	0.417m	73.895?	6.538m	6.827m	Full
22.000%	4.402m	0.262m	73.895?	3.424m	3.576m	Full

Reefing Points

1, Luff: 2.103m ; Leech: 2.162m ; Offset: 0.000m ; Number Eyelets: 4
2, Luff: 4.439m ; Leech: 4.563m ; Offset: 0.000m ; Number Eyelets: 3

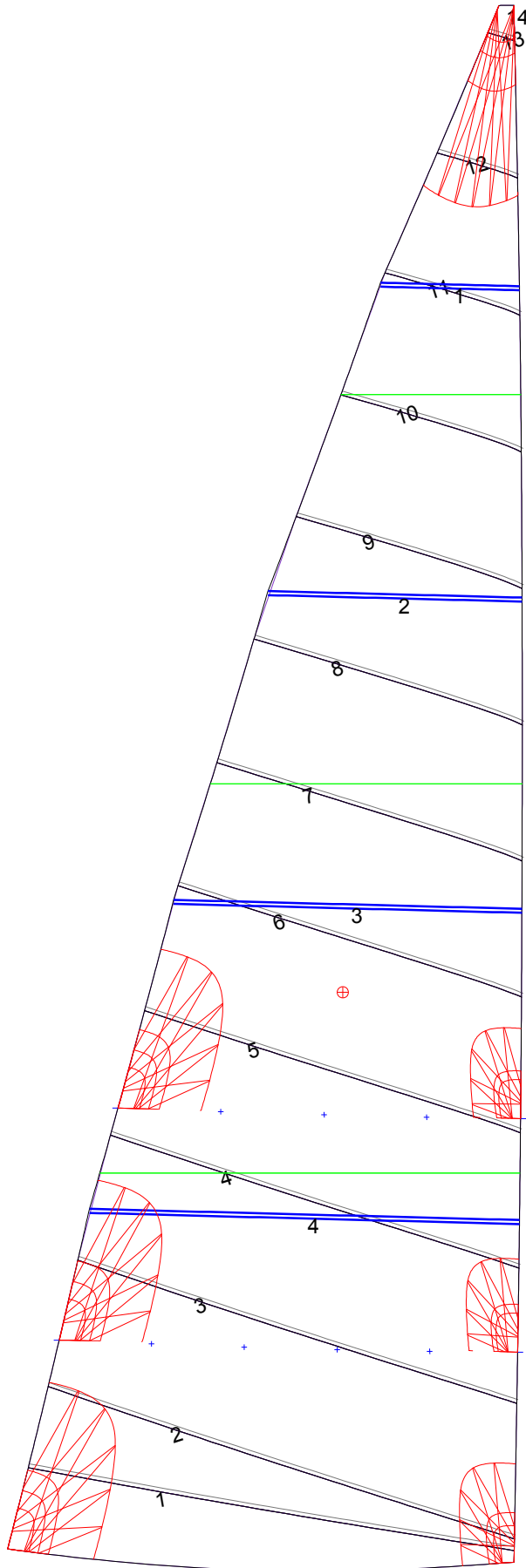
Draft Stripes

1, Luff: 3.894m ; Leech: 3.887m ;
2, Luff: 7.788m ; Leech: 7.936m ;
3, Luff: 11.683m ; Leech: 12.030m ;

Luff Curve

		Fanned Luff (@ 5.00% [0.253m])	Before BSeam
15.579m,	0.000m	100% (15.580m) :	0.000m
13.638m,	-0.040m	90% (14.022m) :	0.057m
11.685m,	-0.069m	80% (12.464m) :	0.109m
9.726m,	-0.081m	70% (10.906m) :	0.148m
7.790m,	-0.082m	60% (9.348m) :	0.168m
5.805m,	-0.076m	50% (7.790m) :	0.172m
3.895m,	-0.061m	40% (6.232m) :	0.161m
1.941m,	-0.035m	30% (4.674m) :	0.136m
0.000m,	0.000m	20% (3.116m) :	0.099m
		10% (1.558m) :	0.050m
		0% (0.000m) :	0.000m

Mainsail: 7001216 Guillermo-1 Beneteau 45F Fullbatt Mainsail.des



Seam Allowances			
Zone: 1	Split	Radial	Cross
	0.040m	0.040m	0.040m

Edge Excesses			
Sail:	Luff	Leech	Foot
	0.000m	0.000m	0.000m

Total Seam Lengths (m)

Horizontal	40.28
Radial/Vertical	0.00
Bi-Radial Split	0.00

Materials

Material	Area (m ²)	Panels
Material 1	47.84	1,2,3,4,5 6,7,8,9,10 11,12,13,14