

Spinnaker: 7001213 Juliano C&C 25 Sym spin.des

Design Info
=====

Design File:
\\NAS\Engineering files\Queenie-Customer Order\Fareast Sails\2023 Order\Need to be Confirmed\7001213 Juliano\70

Initial Design Date: 15/12/2023
Boat:

Comments:

Client:

Design Data
=====

Spinnaker

Measurements

Leech length (SLE): 10.150m
Foot length (SFL): 6.130m
Headboard Width: 0.010m
Maximum width (38.5%): 6.388m
Three-quarter width: 3.904m
Half width (SHW): 6.244m
Quarter width: 6.308m
Foot median: 10.949m
ORC Spinnaker Area: 52.622m?
IRC Spinnaker Area: 52.412m?
Surface Area: 55.086m?
Hoist height: 9.580m
Pole Length: 3.350m

Luff Curve

15.500m, 0.000m
11.625m, 0.000m
7.750m, 0.000m
3.875m, 0.000m
0.000m, 0.000m

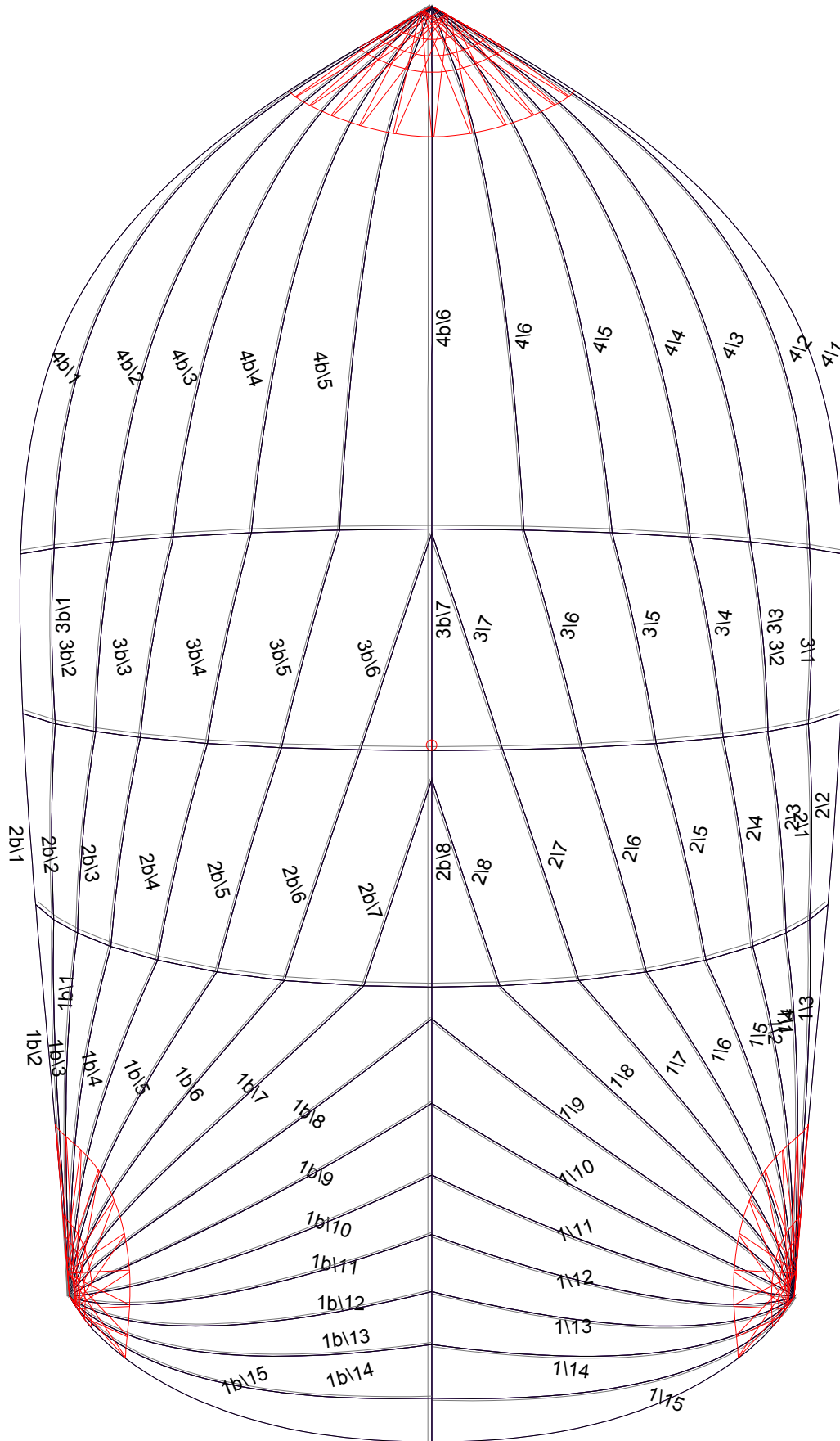
Fanned Luff (@ 5.00% [0.233m])

100% (8.623m) : -0.000m
115% (9.932m) : 0.121m
93% (8.055m) : 0.149m
77% (6.644m) : -0.743m
62% (5.307m) : -0.317m
48% (4.100m) : -0.943m
35% (3.007m) : -0.399m
29% (2.513m) : 0.369m
19% (1.662m) : 0.398m
10% (0.868m) : 0.199m
0% (0.000m) : 0.000m

Before BSeam

0.000m
0.778m
1.734m
1.913m
1.858m
1.663m
1.379m
1.042m
0.693m
0.352m
0.000m

Spinnaker: 7001213 Juliano C&C 25 Sym spin.des



Seam Allowances

Zone:	Split	Radial	Cross
Zone: 1/a	0.025m	0.013m	0.025m
Zone: 1/b	0.025m	0.013m	0.025m
Zone: 2/a	0.025m	0.013m	0.025m
Zone: 2/b	0.025m	0.013m	0.025m
Zone: 3/a	0.025m	0.013m	0.025m
Zone: 3/b	0.025m	0.013m	0.025m
Zone: 4/a	0.025m	0.013m	0.025m
Zone: 4/b	0.025m	0.013m	0.025m

Edge Excesses

Sail:	Luff	Leech	Foot
	0.000m	0.000m	0.000m

Total Seam Lengths (m)

Horizontal	18.98
Radial/Vertical	179.93
Bi-Radial Split	11.21

Materials

Material	Area (m ²)	Panels
Material 1	55.04	1\1,1\2,1\3,1\4,1\5 1\6,1\7,1\8,1\9,1\10 1\11,1\12,1\13,1\14,1\15 1b\1,1b\2,1b\3,1b\4,1b\5 1b\6,1b\7,1b\8,1b\9,1b\10 1b\11,1b\12,1b\13,1b\14,1b\15 2\1,2\2,2\3,2\4,2\5 2\6,2\7,2\8,2b\8,2b\7 2b\6,2b\5,2b\4,2b\3,2b\2 2b\1,3\1,3\2,3\3,3\4 3\5,3\6,3\7,3b\7,3b\6 3b\5,3b\4,3b\3,3b\2,3b\1 4\1,4\2,4\3,4\4,4\5 4\6,4b\6,4b\5,4b\4,4b\3 4b\2,4b\1