

# Genoa: 7001204 Richie Beneteau 38 Headsail.des

Design Info  
=====

Design File:  
\\NAS\Engineering files\Queenie-Customer Order\Fareast Sails\2023 Order\Need to be Confirmed\7001204 Richie\700

Initial Design Date: 13/12/2023  
Boat:

Comments:  
LP 140%%

Client:

Design Data  
=====

## Genoa

### Measurements

Luff geodesic: 44.300Ft  
 Leech geodesic: 42.398Ft  
 Foot geodesic: 21.371Ft  
 Headboard width: 0.112Ft  
 Luff perpendicular (HLP): 20.300Ft  
 Upper width (HUW): 2.292Ft  
 Three-quarter width (HTW): 4.567Ft  
 Half width (HHW): 9.482Ft  
 Quarter width (HQW): 14.788Ft  
 Foot median: 42.689Ft  
 ORC Headsail area: 433.962Ft?  
 IRC Headsail area: 432.962Ft?  
 Surface area: 437.040Ft?  
 Forestay height: 46.000Ft  
 J: 14.500Ft

### Luff Curve

44.291Ft, 0.000Ft  
 40.611Ft, 0.150Ft  
 36.540Ft, 0.272Ft  
 32.957Ft, 0.334Ft  
 28.790Ft, 0.358Ft  
 22.041Ft, 0.314Ft  
 14.395Ft, 0.213Ft  
 7.486Ft, 0.107Ft  
 0.000Ft, 0.000Ft

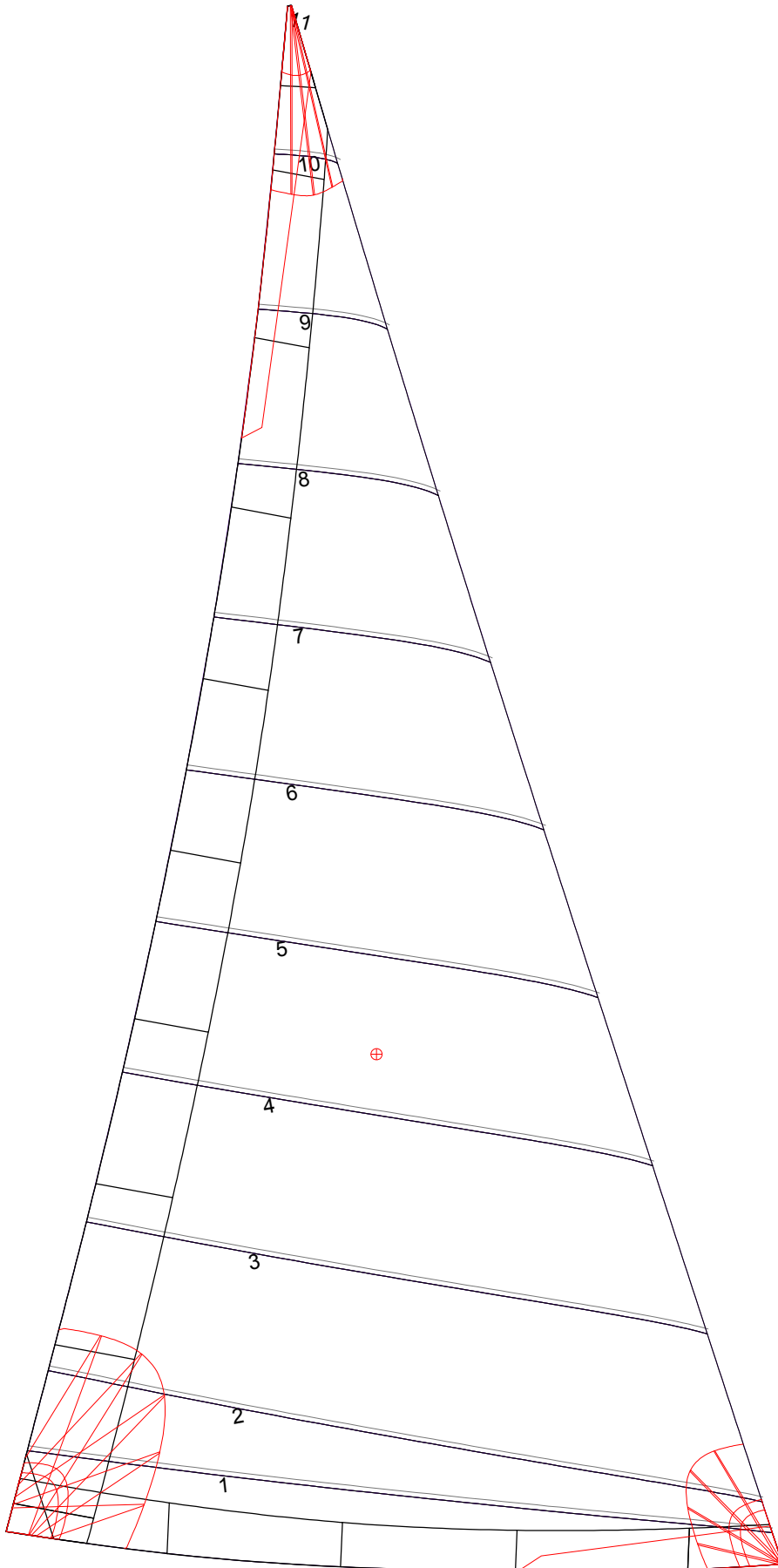
### Fanned Luff (@ 5.00% [1.052Ft])

100% (44.292Ft) : 0.000Ft  
 90% (39.860Ft) : -0.164Ft  
 80% (35.439Ft) : -0.287Ft  
 70% (31.006Ft) : -0.350Ft  
 60% (26.578Ft) : -0.361Ft  
 50% (22.147Ft) : -0.331Ft  
 40% (17.718Ft) : -0.277Ft  
 30% (13.288Ft) : -0.213Ft  
 20% (8.861Ft) : -0.144Ft  
 10% (4.425Ft) : -0.073Ft  
 0% (0.000Ft) : 0.000Ft

### Before BSeam

-0.000Ft  
 0.012Ft  
 0.041Ft  
 0.077Ft  
 0.113Ft  
 0.146Ft  
 0.164Ft  
 0.161Ft  
 0.134Ft  
 0.079Ft  
 0.000Ft

# Genoa: 7001204 Richie Beneteau 38 Headsail.des



## Seam Allowances

Zone:	Split	Radial	Cross
Zone: 1	0.131Ft	0.131Ft	0.131Ft
Cover 1	0.082Ft	0.082Ft	0.082Ft
Cover 2	0.082Ft	0.082Ft	0.082Ft
Cover 3	0.000Ft	0.000Ft	0.000Ft
Cover 4	0.000Ft	0.000Ft	0.000Ft

## Edge Excesses

Sail:	Luff	Leech	Foot
Sail:	0.000Ft	0.000Ft	0.000Ft
Cover 0	0.230Ft	0.328Ft	0.230Ft
Cover 1	0.230Ft	0.230Ft	0.328Ft
Cover 2	0.000Ft	0.230Ft	0.230Ft
Cover 3	0.000Ft	0.230Ft	0.230Ft

## Total Seam Lengths (Ft)

Horizontal	116.72
Radial/Vertical	0.00
Bi-Radial Split	0.00

## Materials

Material	Area (Ft <sup>2</sup> )	Panels
Material 1	437.75	1,2,3,4,5 6,7,8,9,10 11