

Genoa: 7001132 Mark-2 Lagoon 440 HeadsailV2.des

Design Info
=====

Design File:
\\NAS\Engineering files\Queenie-Customer Order\Fareast Sails\2024 Orders\Need to be Confirmed\7001132 Mark\700

Initial Design Date: 18/2/2024
Boat:

Comments:

Client:

Design Data
=====

Genoa

Measurements

Luff geodesic:	16.565m
Leech geodesic:	14.557m
Foot geodesic:	5.261m
Headboard width:	0.055m
Luff perpendicular (HLP):	4.524m
Upper width (HUW):	0.503m
Three-quarter width (HTW):	0.978m
Half width (HHW):	2.044m
Quarter width (HQW):	3.243m
Foot median:	15.527m
ORC Headsail area:	35.613m?
IRC Headsail area:	35.509m?
Surface area:	36.094m?
Forestay height:	17.170m
J:	3.480m

Draft Stripes

1, Luff: 4.156m ; Leech: 2.461m ;
2, Luff: 8.311m ; Leech: 6.496m ;
3, Luff: 12.453m ; Leech: 10.504m ;

Luff Curve

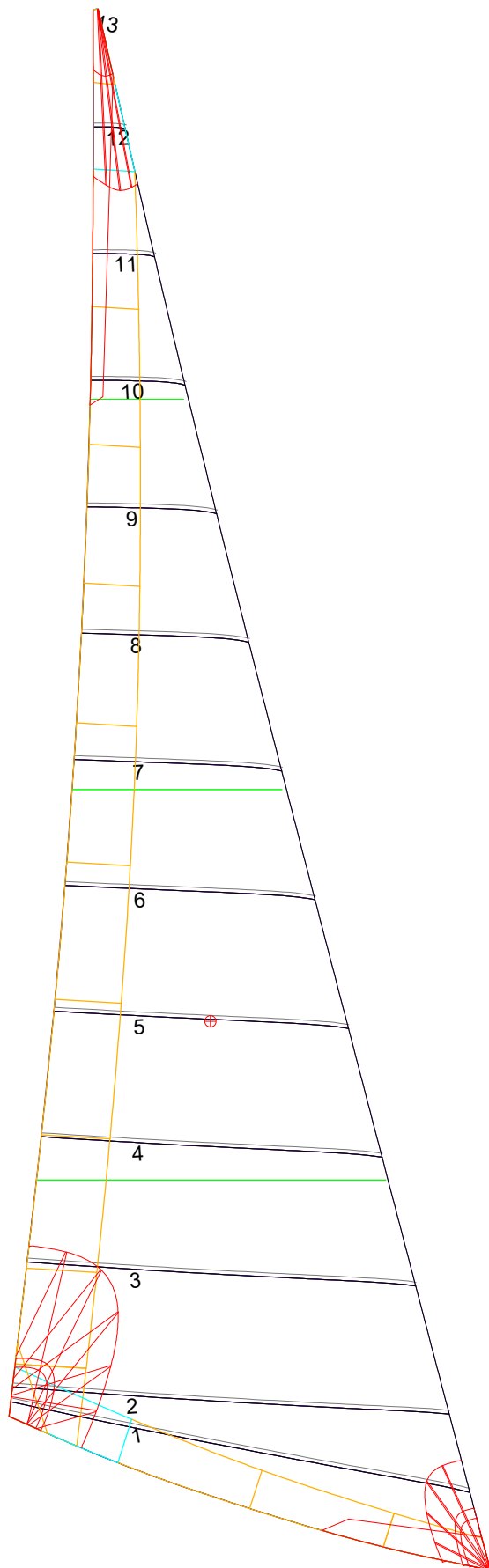
16.561m,	0.000m
15.185m,	0.056m
13.663m,	0.102m
12.323m,	0.125m
10.765m,	0.134m
8.242m,	0.117m
5.382m,	0.080m
2.799m,	0.040m
0.000m,	0.000m

Fanned Luff (@ 5.00% [0.247m])

100% (16.562m) :	0.000m	-0.000m
90% (14.908m) :	-0.067m	-0.022m
80% (13.250m) :	-0.115m	-0.032m
70% (11.595m) :	-0.137m	-0.029m
60% (9.938m) :	-0.139m	-0.016m
50% (8.281m) :	-0.127m	-0.000m
40% (6.625m) :	-0.105m	0.014m
30% (4.969m) :	-0.080m	0.020m
20% (3.313m) :	-0.053m	0.021m
10% (1.656m) :	-0.027m	0.016m
0% (0.000m) :	0.000m	0.000m

Before BSeam

Genoa: 7001132 Mark-2 Lagoon 440 HeadsailV2.des



Seam Allowances

Zone:	Split	Radial	Cross
Zone: 1	0.040m	0.040m	0.040m
Cover 1	0.025m	0.025m	0.025m
Cover 2	0.025m	0.025m	0.025m
Cover 3	0.000m	0.000m	0.000m
Cover 4	0.000m	0.000m	0.000m

Edge Excesses

Sail:	Luff	Leech	Foot
Cover 0	0.070m	0.100m	0.070m
Cover 1	0.070m	0.070m	0.100m
Cover 2	0.000m	0.070m	0.070m
Cover 3	0.000m	0.070m	0.070m

Total Seam Lengths (m)

Horizontal	30.97
Radial/Vertical	0.00
Bi-Radial Split	0.00

Materials

Material	Area (m ²)	Panels
Material 1	36.04	1,2,3,4,5 6,7,8,9,10 11,12,13