

# Genoa: 7001129 Sean Staysail.des

Design Info  
=====

Design File:  
\\NAS\Engineering files\Queenie-Customer Order\Fareast Sails\2023 Order\Need to be Confirmed\7001129 Sean\7001129 Sean Staysail.des

Initial Design Date: 2/12/2023  
Boat:

Comments:

Client:

Design Data  
=====

## Genoa

### Measurements

Luff geodesic: 29.205Ft  
Leech geodesic: 27.500Ft  
Foot geodesic: 9.160Ft  
Headboard width: 0.100Ft  
Luff perpendicular (HLP): 8.651Ft  
Upper width (HUW): 0.944Ft  
Three-quarter width (HTW): 1.842Ft  
Half width (HHW): 3.871Ft  
Quarter width (HQW): 6.173Ft  
Foot median: 28.198Ft  
ORC Headsail area: 119.424Ft?  
IRC Headsail area: 119.094Ft?  
Surface area: 119.252Ft?  
Forestay height: 30.200Ft  
J: 8.500Ft

### Draft Stripes

1, Luff: 9.667Ft ; Leech: 8.625Ft ;  
2, Luff: 19.323Ft ; Leech: 17.893Ft ;

### Luff Curve

29.202Ft, 0.000Ft  
26.775Ft, 0.073Ft  
24.092Ft, 0.133Ft  
21.729Ft, 0.164Ft  
18.982Ft, 0.175Ft  
14.532Ft, 0.154Ft  
9.491Ft, 0.104Ft  
4.936Ft, 0.052Ft  
0.000Ft, 0.000Ft

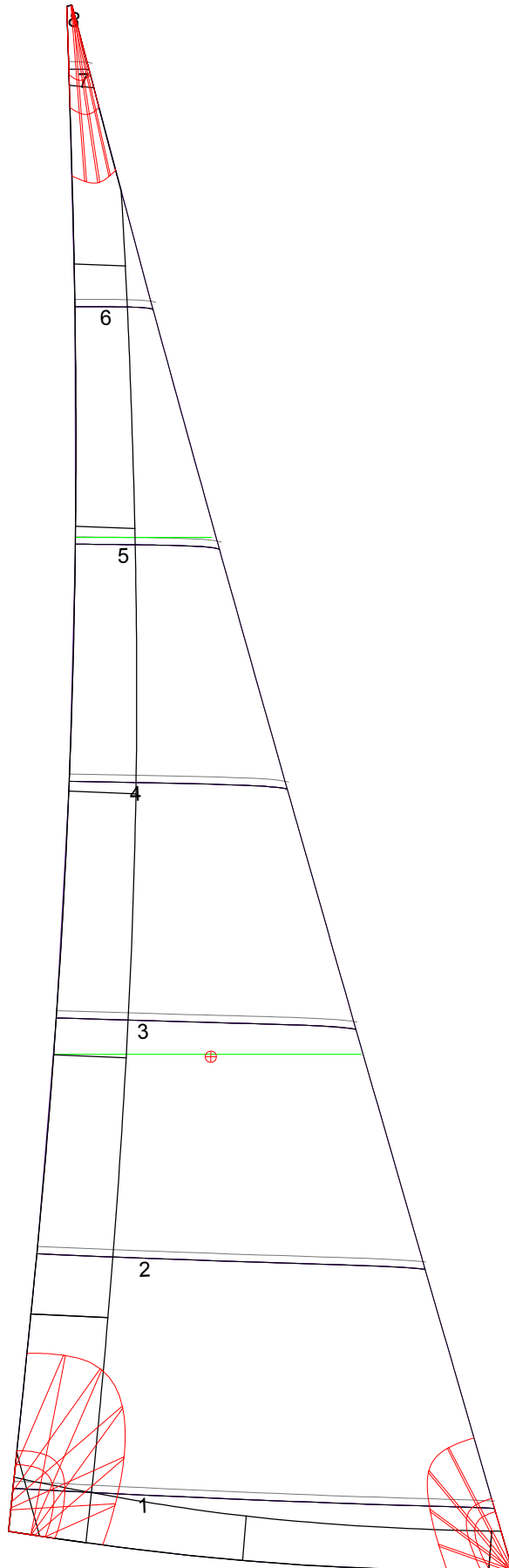
### Fanned Luff (@ 5.00% [0.453Ft])

100% (29.203Ft) : -0.000Ft  
90% (26.281Ft) : -0.075Ft  
80% (23.364Ft) : -0.131Ft  
70% (20.442Ft) : -0.159Ft  
60% (17.522Ft) : -0.164Ft  
50% (14.602Ft) : -0.152Ft  
40% (11.681Ft) : -0.128Ft  
30% (8.761Ft) : -0.100Ft  
20% (5.841Ft) : -0.068Ft  
10% (2.919Ft) : -0.036Ft  
0% (0.000Ft) : 0.000Ft

### Before BSeam

-0.000Ft  
-0.018Ft  
-0.024Ft  
-0.013Ft  
0.007Ft  
0.028Ft  
0.044Ft  
0.049Ft  
0.047Ft  
0.032Ft  
0.000Ft

# Genoa: 7001129 Sean Staysail.des



## Seam Allowances

Zone:	Split	Radial	Cross
Zone: 1	0.131Ft	0.131Ft	0.131Ft
Cover 1	0.082Ft	0.082Ft	0.082Ft
Cover 2	0.082Ft	0.082Ft	0.082Ft
Cover 3	0.000Ft	0.000Ft	0.000Ft
Cover 4	0.000Ft	0.000Ft	0.000Ft

## Edge Excesses

	Luff	Leech	Foot
Sail:	0.000Ft	0.000Ft	0.000Ft
Cover 0	0.230Ft	0.328Ft	0.230Ft
Cover 1	0.230Ft	0.230Ft	0.328Ft
Cover 2	0.000Ft	0.230Ft	0.230Ft
Cover 3	0.000Ft	0.230Ft	0.230Ft

## Total Seam Lengths (Ft)

Horizontal	30.32
Radial/Vertical	0.00
Bi-Radial Split	0.00

## Materials

Material	Area (Ft <sup>2</sup> )	Panels
Material 1	119.69	1,2,3,4,5 6,7,8