

Mainsail: 7001128 Dave Mainsail.des

Design Info
=====

Design File:
\\NAS\Engineering files\Queenie-Customer Order\Fareast Sails\2023 Order\Need to be Confirmed\7001128 Dave\7001128 Dave Mainsail.des

Initial Design Date: 2/12/2023
Boat:

Comments:

Client:

Design Data
=====

Main

Measurements

Luff geodesic:	11.420m
Leech geodesic:	12.061m
Foot geodesic:	4.059m
Head geodesic:	0.133m
Upper width (MUW):	0.840m
Three-quarter width (MTW):	1.512m
Half width (MHW):	2.578m
Quarter width (MQW):	3.398m
Foot median:	11.581m
ORC Mainsail area:	27.384m ²
Surface area:	27.873m ²
Clew height:	0.100m
Mast rake:	0.000m

Battens

Position	Length	Roach	Angle	Luff	Leech	Full
82.000%	1.233m	0.278m	72.434°	9.355m	9.850m	Full
62.000%	2.165m	0.362m	72.434°	7.073m	7.448m	Full
42.000%	1.200m	0.319m	72.434°	4.791m	5.045m	
22.000%	1.200m	0.184m	72.434°	2.509m	2.643m	

Reefing Points

1, Luff: 1.800m ; Leech: 1.864m ; Offset: 0.000m ; Number Eyelets: 0

Draft Stripes

1, Luff: 3.767m ; Leech: 3.816m ;
2, Luff: 7.535m ; Leech: 7.773m ;

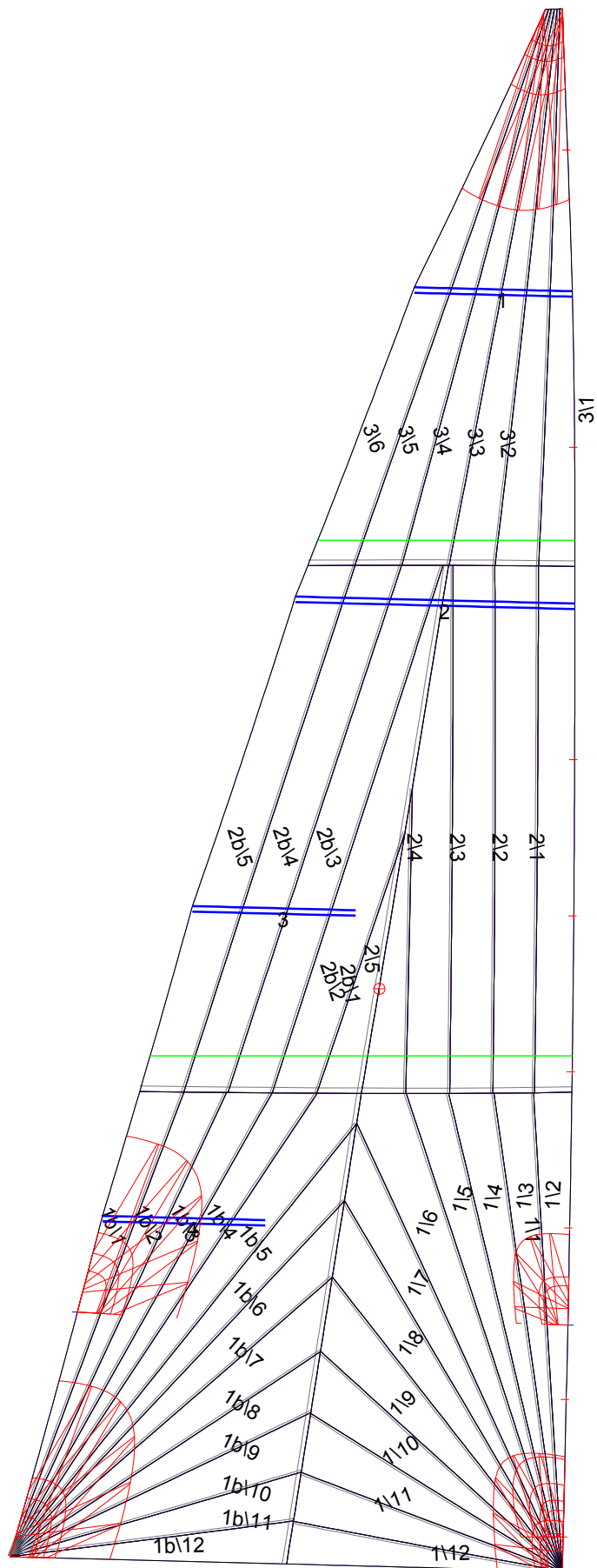
Luff Slides

1, Position: 1.255m
2, Position: 2.509m
3, Position: 3.650m
4, Position: 4.791m
5, Position: 5.932m
6, Position: 8.214m
7, Position: 10.388m

Luff Curve

Position	Offset	Fanned Luff (@ 5.00% [0.202m])	Before BSeam
11.419m,	0.000m	100% (11.420m) :	0.000m
9.996m,	-0.055m	90% (10.279m) :	0.063m
8.564m,	-0.085m	80% (9.136m) :	0.117m
7.129m,	-0.092m	70% (7.994m) :	0.147m
5.709m,	-0.090m	60% (6.852m) :	0.158m
4.255m,	-0.079m	50% (5.710m) :	0.157m
2.855m,	-0.060m	40% (4.568m) :	0.145m
1.423m,	-0.032m	30% (3.426m) :	0.119m
0.000m,	0.000m	20% (2.284m) :	0.085m
		10% (1.142m) :	0.045m
		0% (0.000m) :	0.000m

Mainsail: 7001128 Dave Mainsail.des



Seam Allowances

Zone:	Split	Radial	Cross
Zone: 1/a	0.032m	0.016m	0.040m
Zone: 1/b	0.032m	0.016m	0.040m
Zone: 2/a	0.032m	0.016m	0.040m
Zone: 2/b	0.032m	0.016m	0.040m
Zone: 3	0.032m	0.016m	0.040m

Edge Excesses

Sail:	Luff	Leech	Foot
	0.000m	0.000m	0.000m

Total Seam Lengths (m)

Horizontal	5.33
Radial/Vertical	117.85
Bi-Radial Split	7.75

Materials

Material	Area (m ²)	Panels
Material 1	27.89	1\1,1\2,1\3,1\4,1\5 1\6,1\7,1\8,1\9,1\10 1\11,1\12,1b\1,1b\2,1b\3 1b\4,1b\5,1b\6,1b\7,1b\8 1b\9,1b\10,1b\11,1b\12,2\1 2\2,2\3,2\4,2\5,2b\1 2b\2,2b\3,2b\4,2b\5,3\1 3\2,3\3,3\4,3\5,3\6